



01619 - BUSH'S Bean Pot Baked Beans 6-117 OZ

Our original flavored beans rank #1 among your customers. This family recipe is slow-cooked with cured bacon, fine brown sugar, a select blend of spices, and of course, our secret ingredients. BUSH'S BEST Bean Pot Baked Beans are the perfect complement to grilled steak, chops, chicken and fish, and they also make a great ingredient.

Brand: BUSH'S BEST®



Nutrition Facts

Serving Size 1/2 cup (130g)
Servings Per Container 26

Amount Per Serving

Calories 140

Calories from Fat 10

% Daily Value*

Total Fat 1 g 2%

Saturated Fat 0 g 0%

Trans Fat 0 g

Cholesterol 0 mg 0%

Sodium 550 mg 23%

Total Carbohydrate 29 g 10%

Dietary Fiber 5 g 20%

Sugars 12 g

Protein 6 g

Vitamin A 0 % • Vitamin C 0 %

Calcium 4 % • Iron 10 %

*Percent Daily Values are based on a 2,000 calorie diet. Your daily values may be higher or lower depending on your calorie needs.

Calories: 2,000 2,500

Total Fat Less than 65g 80g

Sat Fat Less than 20g 25g

Cholesterol Less than 300mg 300mg

Sodium Less than 2,400mg 2,400mg

Total 300g 375g

Carbohydrate 300g 375g

Dietary 25g 30g

Fiber 25g 30g

Calories per gram:

Fat 9 • Carbohydrate 4 • Protein 4

Ingredients

Prepared White Beans, Water, Brown Sugar, Salt, Mustard (Vinegar, Water, Mustard Seed, Salt, Turmeric, Paprika), Bacon, Modified Corn Starch, Onion Powder, Caramel Color, Spices, Garlic Powder, Natural Flavor.

Product Specifications

GTIN	10039400016196	Case Net Weight	43.8800 LB
Item UPC	01619	Case L,W,H	18.750 IN, 12.500 IN, 7.000 IN
Unit Size	6 / 117OZ	Cube	0.95 CF
Shelf Life (Total / At Shipping)	730 Days / 90 Days	Tie x High	8 x 7
Case Gross Weight	48.3000 LB	Kosher Status	No

Each Specifications

GTIN	00039400016199	Case Net Weight	117.0000 OZ
Item UPC		Case L,W,H	6.190 IN, 6.190 IN, 7.000 IN
Unit Size	1 / 117OZ	Cube	0.16 CF
Shelf Life (Total / At Shipping)	730 Days / 90 Days	Tie x High	0 x 0
Case Gross Weight	128.0000 OZ	Kosher Status	

Preparation and Cooking

Empty contents into saucepan. Heat to simmer

Serving Suggestions

Heat and serve

Packaging and Storage

Store in a clean dry place

Allergens

FREE FROM:

Eggs or Egg Derivatives, Fish or Fish Derivatives, Milk or Milk Derivatives, Peanuts or Peanut Derivatives, Sesame seeds or Sesame seed Derivatives, Shellfish or Shellfish Derivatives, Soybeans or Soybean Derivatives, Treenuts or Treenut Derivatives, Wheat or Wheat Derivatives

Barcodes

Case Barcode



10039400016196

Each Barcode



0 39400 01619 9

Grandma's Retail Macaroni Salad



An old-fashioned blend of macaroni, diced celery and shredded carrots in Grandma's secret dressing.



Nutrition Facts

servings per container
Serving size **2/3 cup (134g)**

Amount per serving
Calories 400

% Daily Value*

Total Fat 32g **41%**

Saturated Fat 5g **25%**

Trans Fat 0.5g

Cholesterol 65mg **22%**

Sodium 640mg **28%**

Total Carbohydrate 23g **8%**

Dietary Fiber 1g **4%**

Total Sugars 7g

Includes 6g Added Sugars **12%**

Protein 5g

Vitamin D 0.4mcg **2%**

Calcium 20mg **2%**

Iron 1.1mg **6%**

Potassium 120mg **2%**

*The % Daily Value tells you how much a nutrient in a serving of food contributes to a daily diet. 2,000 calories a day is used for general nutrition advice.



INGREDIENTS: COOKED ENRICHED MACARONI PRODUCT (SEMOLINA [WHEAT], ENRICHED WITH NIACIN, FERROUS SULFATE, THIAMIN MONONITRATE, RIBOFLAVIN, FOLIC ACID), SOYBEAN OIL, EGGS, SWEET RELISH (PICKLES, FRUCTOSE, VINEGAR, WATER, SALT, XANTHAN GUM, RED PEPPERS, NATURAL FLAVORS, SPICES, ALUM [FIRMING AGENT], TURMERIC [COLOR]), WATER, ONIONS, EGG YOLKS (EGG YOLKS, SALT), HIGH FRUCTOSE CORN SYRUP, CONTAINS LESS THAN 2% OF CELERY, SUGAR, WHITE DISTILLED VINEGAR, MUSTARD (WATER, DISTILLED VINEGAR, MUSTARD SEED, SALT, SPICES), CARROTS, SALT, POTASSIUM SORBATE (TO RETARD SPOILAGE), GARLIC POWDER, SPICE.

CONTAINS: EGG, WHEAT.

Six, 3 lb. Plastic Containers Per Case

Product Code:	Product UPC:	Case UPC:	Case Dimensions:	Case WT:	Gross WT:	Cube:	Layers:	Case Layer:	Total Cases:
2040239	0 29736 60239 5	00 29736 02396 18	17.632" x 6.133" x 9.453"	18 lb.	18.6 lb.	0.59 cuft	4	16	64

Six, 2 lb Plastic Containers Per Case

Product Code:	Product UPC:	Case UPC:	Case Dimensions:	Case WT:	Gross WT:	Cube:	Layers:	Case Layer:	Total Cases:
2620239	0 72106 60239 6	00 072106 02396 2	17.57" x 6.133" x 6.890"	12 lb.	12.4 lb.	0.43 cuft	7	16	112

Twelve, 1 lb. Plastic Containers Per Case

Product Code:	Product UPC:	Case UPC:	Case Dimensions:	Case WT:	Gross WT:	Cube:	Layers:	Case Layer:	Total Cases:
2160239	0 29736 30239 4	00 29736 02393 04	8.945" x 8.945" x 9.703"	12 lb.	12.5 lb.	0.45 cuft	4	20	80

Handling:

Cold Storage:
Store at 33 - 38° F

Trends:

"The new 2015-2020 Dietary Guidelines encourage the consumption of all types of grains for the many nutrients they provide."

- Diane Welland, Nutrition Communications Manager for the National Pasta Association.

Recipe:

Add crispy bacon and fresh dill.

Notes: _____

Ve VEGAN **V** VEGETARIAN **DF** DAIRY FREE **GF** GLUTEN FREE **K** KOSHER

LF LOW FAT **PF** PRESERVATIVE FREE **NAP** NO ADDED PRESERVATIVES **HF** GOOD SOURCE OF FIBER



INFORMATION SUBJECT TO CHANGE. PLEASE REFER TO ON-PACKAGE LABEL FOR MOST CURRENT INFORMATION.

Hamburger Patties - Waldameer Catering

80/20 Ground Beef

Nutritional Information	Nutrient	5/1 (3.2oz)	Unit
	Energy (kcal)	265.805	Calories
	Protein	14.270	Grams
	Total Lipid (fat)	22.680	Grams
	Carbohydrate	0.000	Grams
	Fiber, total dietary	0.000	Grams
	Sugars	0.000	Grams
	Calcium	19.051	Milligrams
	Iron	1.624	Milligrams
	Sodium	59.874	Milligrams
	Vitamin C	0.000	Milligrams
	Vitamin A	12.701	IU
	Fatty acids, total saturated	8.680	Grams
	Fatty acids, total trans	1.361	Grams
	Cholesterol	68.039	Milligrams

Smith's®

SINCE 1927

Good Taste
Never Goes Out of Style.

Skinless Wieners

Naturally Smoked



U.S.
INSPECTED
AND PASSED BY
DEPARTMENT OF
AGRICULTURE
EST. 9370

All the Flavor with 1/3 Less Fat

than wieners in USDA handbook 8. Fat has been lowered from 13g to 9g per serving.

Nutrition Facts

Serv. Size: (45g)
Serv. per Container: 10
Calories 110
Calories from Fat 80

Amount/serving	%DV*	Amount/serving	%DV*
Total Fat 9g	13%	Total Carbohydrate 2g	1%
Saturated Fat 3g	15%	Dietary Fiber 0g	0%
Trans Fats 0g		Sugars 1g	
Cholesterol 20mg	6%	Protein 6g	
Sodium 460mg	19%		
Vitamin A 2% • Vitamin C 0% • Calcium 2% • Iron 2%			

* Percent Daily Values are based on a 2,000 calorie diet.

Ingredients:

Pork, Beef,
Water, Salt,
Corn Syrup
Solids, Dextrose,
Mustard, Paprika,
Sodium Phosphate,
Onion Powder, Spices,
Sodium Erythorbate,
Natural Flavors,
Extractive of Paprika,
Sodium Nitrite

FULLY COOKED
Consume within 5 days of opening.
KEEP REFRIGERATED



SINCE 1927 WE'VE GUARANTEED YOUR SATISFACTION!
Smith Provision Co., Inc., Erie, PA 16501-1566
Questions or comments? Contact us at 800-334-9151
or www.smithhotdogs.com

NET WT. 16 OZ. (1LB.)



Capabilities Retail Brands **Products** Recipes

Grandma's Potato Salad with Egg

Description
Fresh cooked potatoes, diced eggs, garden-fresh celery, onions and red peppers in Grandma's special dressing.

Product Specs
[Download Spec Sheet](#)

Dietary Tags
[Gluten Free](#), [Kosher](#), [Vegetarian](#)

Category
[Grandma's Back of House Potato Salads](#)

Product Information

Product Code	Pack Size
2020139	2/10 lb

Ingredients

POTATOES, SOYBEAN OIL, WATER, EGGS, ONIONS, HIGH FRUCTOSE CORN SYRUP, CONTAINS LESS THAN 2% OF CELERY, WHITE DISTILLED VINEGAR, RED BELL PEPPERS, EGG YOLKS (EGG YOLKS, SALT), SALT, SUGAR, MUSTARD (WATER, DISTILLED VINEGAR, MUSTARD SEED, SALT, SPICES), POTASSIUM SORBATE (TO RETARD SPOilage), MODIFIED CORN STARCH, DEXTROSE, WHEY PROTEIN CONCENTRATE, GUAR GUM, XANTHAN GUM, SPICES, TURMERIC (COLOR) AND ANNATTO (COLOR), PROPYLENE GLYCOL ALGINATE, ONION POWDER, PAPRIKA (COLOR).

Allergens
EGG, MILK.

Revised: 9/18/19

Grandma's Retail Potato Salad with Egg

Fresh cooked potatoes, diced eggs, garden-fresh celery, onions and red peppers in Grandma's special dressing.

Nutrition Facts

servings per container
Serving size 2/3 cup (142g)

Amount per serving
Calories 270

	% Daily Value*
Total Fat 18g	23%
Saturated Fat 3g	15%
Trans Fat 0g	
Cholesterol 35mg	12%
Sodium 420mg	18%
Total Carbohydrate 23g	8%
Dietary Fiber 2g	7%
Total Sugars 4g	
Includes 3g Added Sugars	6%
Protein 3g	
Vitamin D 0.2mcg	2%
Calcium 20mg	2%
Iron 0.5mg	2%
Potassium 400mg	8%

*The % Daily Value tells you how much a nutrient in a serving of food contributes to a daily diet. 2,000 calories a day is used for general nutrition advice.

INGREDIENTS: POTATOES, SOYBEAN OIL, WATER, EGGS, ONIONS, HIGH FRUCTOSE CORN SYRUP, CONTAINS LESS THAN 2% OF CELERY, WHITE DISTILLED VINEGAR, RED BELL PEPPERS, EGG YOLKS (EGG YOLKS, SALT), SALT, SUGAR, MUSTARD (WATER, DISTILLED VINEGAR, MUSTARD SEED, SALT, SPICES), POTASSIUM SORBATE (TO RETARD SPOilage), MODIFIED CORN STARCH, DEXTROSE, WHEY PROTEIN CONCENTRATE, GUAR GUM, XANTHAN GUM, SPICES, TURMERIC (COLOR) AND ANNATTO (COLOR), PROPYLENE GLYCOL ALGINATE, ONION POWDER, PAPRIKA (COLOR).

CONTAINS EGG, MILK.

Six, 3 lb. Printed Containers Per Case

Product Code: 2040139	Product UPC: 0 29736 60139 4	Case UPC: 00 29736 01396 28	Case Dimensions: 17.832" x 6.133" x 9.453"	Case WT: 16 lb.	Gross WT: 18.7 lb.	Cube: 0.59 cu ft	Layers: 4	Case Layer: 16	Total Cases: 64
-----------------------	------------------------------	-----------------------------	--------------------------------------------	-----------------	--------------------	------------------	-----------	----------------	-----------------

Six, 2 lb Printed Containers Per Case

Product Code: 2620139	Product UPC: 0 72106 80139 9	Case UPC: 00 072106 01396 3	Case Dimensions: 17.757" x 6.133" x 6.39"	Case WT: 12 lb.	Gross WT: 12.5 lb.	Cube: 0.40 cu ft	Layers: 7	Case Layer: 16	Total Cases: 112
-----------------------	------------------------------	-----------------------------	-------------------------------------------	-----------------	--------------------	------------------	-----------	----------------	------------------

Twelve, 1 lb. Plastic Containers Per Case

Product Code: 2160139	Product UPC: 0 29736 30139 7	Case UPC: 00 29736 01393 14	Case Dimensions: 8.945" x 6.945" x 9.265"	Case WT: 12 lb.	Gross WT: 12.5 lb.	Cube: 0.43 cu ft	Layers: 5	Case Layer: 20	Total Cases: 100
-----------------------	------------------------------	-----------------------------	-------------------------------------------	-----------------	--------------------	------------------	-----------	----------------	------------------

Handling:
Cold Storage:
Store at 33 - 38° F

Trends:
Consumer Usage
Last Served, How Were They Prepared

Source: 2017 ConsumerA&U

Recipe:
Mix in diced chorizo sausage for a spicy kick.

Notes:

VEGAN **VEGETARIAN** **DF** **DAIRY FREE** **GF** **GLUTEN FREE** **K** **KOSHER**

LF **LOW FAT** **PF** **PRESERVATIVE FREE** **NA** **NO ADDED PRESERVATIVES** **HF** **GOOD SOURCE OF FIBER**

SANDRIDGE Food Corporation
WWW.SANDRIDGE.COM | 800.944.9444
INFORMATION SUBJECT TO CHANGE. PLEASE REFER TO ON-PACKAGE LABEL FOR MOST CURRENT INFORMATION.



Nutrition Facts

16 Servings Per Container
Serving Size 1 bun (43g)

Amount per serving
Calories 120

% Daily Value*

Total Fat	1.5g	2%
Saturated Fat	0g	0%
Trans Fat	0g	
Polyunsaturated Fat	0.5g	
Monounsaturated Fat	0g	
Cholesterol	0mg	0%
Sodium	250mg	11%
Total Carbohydrate	23g	8%
Dietary Fiber	<1g	3%
Total Sugars	3g	
Includes 3g Added Sugars		6%

Protein 4g

Vitamin D	0mcg	0%	Calcium	45mg	4%
Iron	1.2mg	6%	Potassium	35mg	0%
Thiamin	0.2mg	15%	Riboflavin	0.1mg	10%
Niacin	1.8mg	10%	Folate	70mcg DFE	20%
				(40mcg folic acid)	

*The % Daily Value (DV) tells you how much a nutrient in a serving of food contributes to a daily diet. 2,000 calories a day is used for general nutrition advice.

INGREDIENTS: ENRICHED WHEAT FLOUR [FLOUR, MALTED BARLEY FLOUR, REDUCED IRON, NIACIN, THIAMIN MONONITRATE (VITAMIN B1), RIBOFLAVIN (VITAMIN B2), FOLIC ACID], WATER, SUGAR, YEAST, SOYBEAN OIL, SALT, WHEAT GLUTEN, PRESERVATIVES (CALCIUM PROPIONATE, SORBIC ACID), GRAIN VINEGAR, DATEM, MONOGLYCERIDES, CELLULOSE GUM, CITRIC ACID, SOY LECITHIN.

CONTAINS WHEAT, SOY.

R20-078-300819



Nutrition Facts	
16 Servings Per Container	
Serving Size	1 bun (43g)
Amount Per Serving	
Calories	120
% Daily Value*	
Total Fat 1.5g	2%
Saturated Fat 0g	0%
Trans Fat 0g	
Polyunsaturated Fat 0.5g	
Monounsaturated Fat 0g	
Cholesterol 0mg	0%
Sodium 250mg	11%
Total Carbohydrate 23g	8%
Dietary Fiber <1g	3%
Total Sugars 3g	
Includes 3g Added Sugars	6%
Protein 4g	
Vitamin D 0mcg 0% • Calcium 45mg 4%	
Iron 1.2mg 6% • Potassium 35mg 0%	
Thiamin 0.2mg 15% • Riboflavin 0.1mg 10%	
Niacin 1.8mg 10% • Folate 70mcg DFE 20% (40mcg folic acid)	
*The % Daily Value (DV) tells you how much a nutrient in a serving of food contributes to a daily diet. 2,000 calories a day is used for general nutrition advice.	

INGREDIENTS: ENRICHED WHEAT FLOUR [FLOUR, MALTED BARLEY FLOUR, REDUCED IRON, NIACIN, THIAMIN MONONITRATE (VITAMIN B1), RIBOFLAVIN (VITAMIN B2), FOLIC ACID], WATER, SUGAR, YEAST, SOYBEAN OIL, SALT, WHEAT GLUTEN, PRESERVATIVES (CALCIUM PROPIONATE, SORBIC ACID), GRAIN VINEGAR, DATEM, MONOGLYCERIDES, CELLULOSE GUM, CITRIC ACID, SOY LECITHIN.

R20-081-300819

CONTAINS WHEAT, SOY.

Heinz Ketchup Vol-Pak, 3 Gallon



INGREDIENTS: TOMATO CONCENTRATE FROM RED RIPE TOMATOES, DISTILLED VINEGAR, HIGH FRUCTOSE CORN SYRUP, CORN SYRUP, SALT, SPICE, ONION POWDER, NATURAL FLAVORING.

Nutrition			⌵	
Amount Per Serving	Value	Daily (%)		
Calories	20 kcal	-		
Total Fat	0 g	0		
Saturated Fat	0 g	0		
Trans Fat	0 g	-		
Cholesterol	0 mg	0		
Sodium	180 mg	8		
Total Carbohydrates	5 g	2		
Dietary Fiber	-	-		
Total Sugars	4 g	-		
Added Sugar	4 g	7		
Protein	0 g	0		
Vitamin C	-	-		
Vitamin D	0 mcg	0		
Calcium	0 mg	0		
Iron	0 mg	0		
Potassium	0 mg	0		

20

kcal

Calories

0g

Protein

0g

Fat

4g

Sugars

Serving size: 1 Tbsp (17g)

Ingredients

DISTILLED WHITE VINEGAR, MUSTARD SEED, WATER, SALT, TURMERIC, NATURAL FLAVOR AND SPICES.

Nutrition Facts

Serving Size 1 tsp (5g)
Servings Per Container about 588

Amount Per Serving

Calories 0 Calories from Fat 0

% Daily Value*

Total Fat 0g 0%

Saturated Fat 0g 0%

Trans Fat 0g

Cholesterol 0mg 0%

Sodium 60mg 3%

Total Carbohydrate 0g 0%

Dietary Fiber 0g 0%

Sugars 0g

Protein 0g

Vitamin A 0% • Vitamin C 0%

Calcium 0% • Iron 0%

*Percent Daily Values are based on a 2,000 calorie diet. Your daily values may be higher or lower depending on your calorie needs:

	Calories: 2,000	2,500
Total Fat	Less than 65g	80g
Saturated Fat	Less than 20g	25g
Cholesterol	Less than 300mg	300mg
Sodium	Less than 2,400mg	2,400mg
Total Carbohydrate	300g	375g
Dietary Fiber	25g	30g

INGREDIENTS:

DISTILLED WHITE VINEGAR,
MUSTARD SEED, WATER, SALT,
TURMERIC, NATURAL FLAVOR
AND SPICES.

MFD. BY
HEINZ NORTH AMERICA
DIVISION OF
H. J. Heinz Co., L.P.
PITTSBURGH, PA. 15222



Questions/Comments?
Call 1-800-255-5750.

For best results, refrigerate after opening.

Shake well before first use.

Best if used by date on cap.

www.HeinzKetchup.com.



35332666



Nutrition Facts

Pickled cucumber

Sources include: USDA

Amount Per 1 slice (7 g) ▼

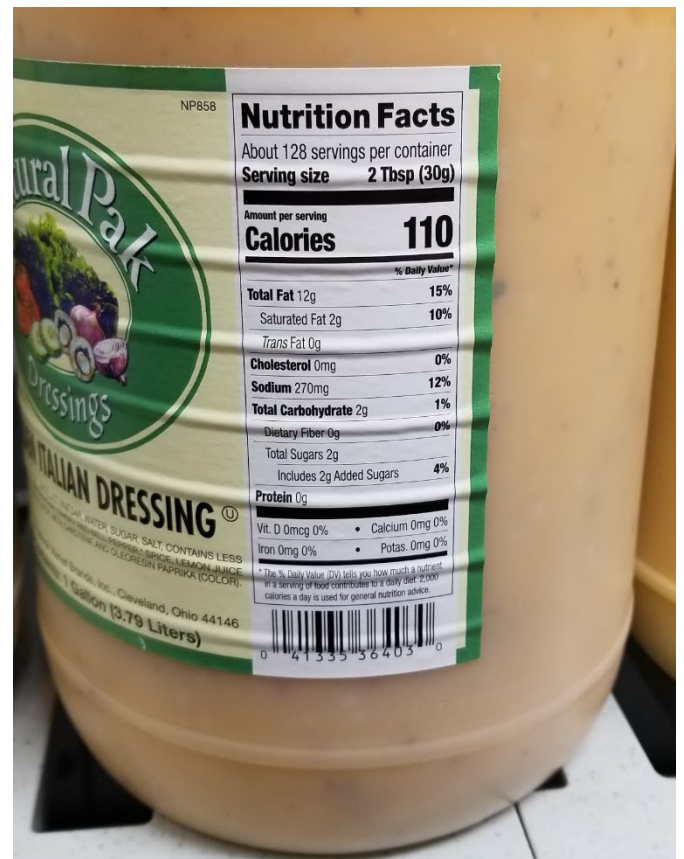
Calories 1

	% Daily Value*
Total Fat 0 g	0%
Saturated fat 0 g	0%
Cholesterol 0 mg	0%
Sodium 85 mg	3%
Potassium 2 mg	0%
Total Carbohydrate 0.2 g	0%
Dietary fiber 0.1 g	0%
Sugar 0.1 g	
Protein 0 g	0%
Vitamin C 0%	Calcium 0%
Iron 0%	Vitamin D 0%
Vitamin B6 0%	Cobalamin 0%
Magnesium 0%	

*Percent Daily Values are based on a 2,000 calorie diet. Your daily values may be higher or lower depending on your calorie needs.

Dill pickle slices
37605





STARRY

12 fl oz



Nutrition Facts	
Serving Size	12 fl oz (360 mL)
Amount Per Serving	
Calories	150
% Daily Value*	
Total Fat	0g
Sodium	35mg
Total Carbohydrate	39g
Total Sugars	39g
Includes 39g Added Sugars	78%
Protein	0g
Not a significant source of other nutrients.	
*%DV = % Daily Value	

CARBONATED WATER, HIGH FRUCTOSE CORN SYRUP, CITRIC ACID, NATURAL FLAVOR, POTASSIUM BENZOATE (PRESERVES FRESHNESS), POTASSIUM CITRATE, CALCIUM DISODIUM EDTA (TO PROTECT FLAVOR)

Contains 0% Juice

FTN-F0000014342-L01

Last updated on February 04, 2023.

Caffeine: 0mg

Phosphorus: 0mg

Notes

- Product formulation, packaging and promotions may change. For current information, refer to packaging on store shelves. Information may also differ from package labels because of the limited space on some packages.
- Visit contact.pepsico.com for more information.

AQUAFINA

16.9 fl oz



Nutrition Facts

1 serving per container
Serving Size 16.9 fl oz (500 mL)

Amount Per Serving
Calories 0

% Daily Value*

Total Fat 0g 0%

Sodium 0mg 0%

Total Carbohydrate 0g 0%

Total Sugars 0g

Includes 0g Added Sugars 0%

Protein 0g

Not a significant source of other nutrients.

*%DV = % Daily Value

PURIFIED WATER

00012000181566

Last updated on February 04, 2023.

Caffeine: 0mg

Phosphorus: 0mg

Notes

- Product formulation, packaging and promotions may change. For current information, refer to packaging on store shelves. Information may also differ from package labels because of the limited space on some packages.
- Visit contact.pepsico.com for more information.

DIET PEPSI

12 fl oz



Nutrition Facts	
Serving Size	12 fl oz (360 mL)
Amount Per Serving	
Calories	0
% Daily Value*	
Total Fat	0g 0%
Sodium	55mg 2%
Total Carbohydrate	0g 0%
Total Sugars	0g
Includes 0g Added Sugars	0%
Protein	0g
Not a significant source of other nutrients.	
*%DV = % Daily Value	

CARBONATED WATER, CARAMEL COLOR, PHOSPHORIC ACID, SODIUM CITRATE, SUCRALOSE, POTASSIUM BENZOATE (PRESERVES FRESHNESS), ACESULFAME POTASSIUM, CAFFEINE, NATURAL FLAVOR, CITRIC ACID, CALCIUM DISODIUM EDTA (TO PROTECT FLAVOR)

FTN-F0000003610-L04

Last updated on February 04, 2023.

Caffeine: 34mg
Phosphorus: 30mg

Notes

- Product formulation, packaging and promotions may change. For current information, refer to packaging on store shelves. Information may also differ from package labels because of the limited space on some packages.
- Visit contact.pepsico.com for more information.

MTN DEW

12 fl oz



Nutrition Facts	
Serving Size	12 fl oz (360 mL)
Amount Per Serving	
Calories	170
% Daily Value*	
Total Fat 0g	0%
Sodium 50mg	2%
Total Carbohydrate 44g	16%
Total Sugars 44g	
Includes 44g Added Sugars	88%
Protein 0g	
Not a significant source of other nutrients.	
*%DV = % Daily Value	

CARBONATED WATER, SUGAR, CONCENTRATED ORANGE JUICE, CITRIC ACID, NATURAL FLAVOR, SODIUM BENZOATE (PRESERVES FRESHNESS), CAFFEINE, SODIUM CITRATE, GUM ARABIC, ERYTHORBIC ACID (PRESERVES FRESHNESS), CALCIUM DISODIUM EDTA (TO PROTECT FLAVOR), YELLOW 5

FTN-44316*01*14-02-L03

Last updated on February 04, 2023.

Caffeine: 52mg

Phosphorus: 0mg

Notes

- Product formulation, packaging and promotions may change. For current information, refer to packaging on store shelves. Information may also differ from package labels because of the limited space on some packages.
- Visit contact.pepsico.com for more information.



Nutrition Facts	
Serving Size	12 fl oz (360 mL)
Amount Per Serving	
Calories	150
	% Daily Value*
Total Fat 0g	0%
Sodium 30mg	1%
Total Carbohydrate 41g	15%
Total Sugars 41g	
Includes 41g Added Sugars	83%
Protein 0g	
Not a significant source of other nutrients.	
*%DV = % Daily Value	

CARBONATED WATER, HIGH FRUCTOSE CORN SYRUP, CARAMEL COLOR, SUGAR, PHOSPHORIC ACID, CAFFEINE, CITRIC ACID, NATURAL FLAVOR

FTN-35005*26*01-01-L11

Last updated on February 04, 2023.

Caffeine: 38mg
Phosphorus: 50mg

Notes

- Product formulation, packaging and promotions may change. For current information, refer to packaging on store shelves. Information may also differ from package labels because of the limited space on some packages.
- Visit contact.pepsico.com for more information.

