



Broadway Pretzels

Broadway Pretzel

PRODUCT INFORMATION SHEET

Product Description:

Jumbo Soft Pretzel (Code# 176)

Pack/Unit:

50/5.0oz (141g) Net Case 15.65 LBS.

Ingredients:

Wheat Flour, Water, Yeast, Guar Gum, Salt, Bicarbonates and Carbonates of Soda

HEATING INSTRUCTIONS:

Conventional or Toaster Oven:

1. Place pretzel on cookie sheet and put into preheated oven at 400° F
2. If salt is desired, gently moisten pretzel and sprinkle on salt from the enclosed pack
3. Heat pretzels for 3-4 minutes

Microwave Oven:

1. Place pretzel on microwave tray
2. If salt is desired, gently moisten pretzel and sprinkle on salt from the enclosed pack
3. Heat pretzel for 30 seconds on high

NUTRITIONAL FACTS (based on 2.5oz portion size)

Total Calories	180	Total Fat from Calories	10
% of Daily Value			
Total Fat	1g		2%
Saturated Fat	0g		0%
Trans Fat	0g		0%
Cholesterol	0mg		0%
Sodium	130mg		6%
Total Carbohydrates	38g		13%
Dietary Fiber	1g		4%
Sugars	2g		
Protein	6g		
Vitamin A			0%
Vitamin C			0%
Calcium			0%
Iron			8%

The list serving size provides 2.5 bread/grain servings based on Group B in the Food Guide oz. eq. serving size exhibit. Each serving size contains a minimum of 40g creditable grains and a minimum of 0g whole grains for Child Nutrition program

Broadway Pretzels





SHAKE WELL

Nutrition Facts

256 servings per container

Serving size 1 tbsp (14g)

Amount per serving

Calories 120

% Daily Value

Total Fat 14g **18%**

Saturated Fat 2.5g **13%**

Trans Fat 0g

Polyunsaturated Fat 7g

Monounsaturated Fat 3g

Cholesterol 0mg **0%**

Sodium 110mg **5%**

Total Carbohydrate 0g **0%**

Protein 0g

Not a significant source of dietary fiber, total sugars, added sugars, vitamin D, calcium, iron, and potassium.

INGREDIENTS: SOYBEAN OIL, HYDROGENATED SOYBEAN OIL, SALT, SOY LECITHIN, TBHQ AND CITRIC ACID ADDED TO HELP PRESERVE FRESHNESS, NATURAL AND ARTIFICIAL FLAVOR, BETA CAROTENE (COLOR), DIMETHYLPOLYSILOXANE.

PACKED EXCLUSIVELY FOR
INTERNATIONAL MARKET BRANDS, INC.
CLEVELAND, OH 44146

ONE GALLON

WARNING: ANY OIL WILL BURN IF OVERHEATED. DO NOT LEAVE UNATTENDED WHILE HEATING. IF SMOKING OCCURS, REDUCE HEAT. IF OIL CATCHES FIRE, TURN OFF HEAT AND COVER PAN UNTIL COOLED. DO NOT PUT WATER ON HOT OR FLAMING OIL, SPATTERS CAN BURN. DO NOT POUR HOT OIL INTO PLASTIC CONTAINER. CONTAINER CAN MELT, CAUSING INJURY.



103350 1M P316979-1

Nutrition Facts

Serving Size

Nutrition Facts

(Unprepared)

53 Servings Per Container

Serving Size 84.0 g

Amount Per Serving

Calories 110.0

	% Daily Value*
Total Fat 2.0 g	3.0%
Saturated Fat 0.0 g	0.0%
Trans Fat 0.0 g	
Cholesterol 80.0 mg	20.0%
Sodium 580.0 mg	25.0%
Total Carbohydrate 2.0 g	1.0%
Dietary Fiber 0.0 g	0.0%
Sugar 1.0 g	
Added Sugar 1.0 g	2.0%
Protein 18.0 g	36.0%
Vitamin D 0.0 µg	0.0%
Potassium 272.0 mg	6.0%
Calcium 6.0 mg	0.0%
Iron 0.0 mg	0.0%
Vitamin A	0.0%
Vitamin C	0.0%

* The % Daily Value (DV) tells you how much a nutrient in a serving of food contributes to a daily diet. 2,000 calories a day is used for general nutrition advice.

Notes:

- The actual nutritional label(s), allergens, dietary claims, and ingredients may vary slightly
- The values displayed above are provided by the vendor of the item (PERDUE FARMS INC.) and are not provided by...

6651

Ingredients

Boneless Skinless Chicken Breast With Rib Meat, Water, Seasoning (Dextrose, Salt, Spice, Dehydrated Garlic, Sodium Phosphate, Maltodextrin, Dehydrated Onion, Grill Flavor [From Sunflower Oil], Modified Corn Starch, Corn Syrup, Spice Extractive), Isolated Soy Protein Product (Isolated Soy Protein, Modified Food Starch, Corn Starch, Carrageenan, Lecithin), Sodium Phosphate.



May Contain



Free From

Sesame Seeds

Sesame Seeds

Fish

Fish

Peanuts

Peanuts

Wheat

Wheat

Milk

Milk

Tree Nuts

Tree Nuts

Eggs

Eggs

Crustaceans

Crustaceans



Contains

Soy

Soy

Tyson® Uncooked Savory Chicken Tenderloins

PRODUCT CODE: 10761560082 GTIN CODE: 00023700688897

Storage Method Cook Method

Frozen Deep Fry

- Made with premium, whole-muscle chicken.
- Vacuum marinated for uniform flavor and moisture throughout.
- Coated with seasoned wheat flour.
- Consistently portioned for easy preparation and lower labor costs.



Nutrition Facts

35 Servings Per Container

Serving Size 128g

Amount Per Serving

Calories 220

Daily Value % *

Total Fat 8g	10%
Saturated Fat 1.5g	8%
Trans Fat 0g	
Polyunsaturated Fat 4g	
Monounsaturated Fat 2g	
Cholesterol 40mg	13%
Sodium 840mg	37%
Total Carbohydrate 17g	6%
Dietary Fiber 0g	0%
Total Sugars 0g	
Includes 0g Added Sugars	0%
Protein 21g	42%
Vitamin D 0mcg	0%
Calcium 10mg	0%
Iron 0.4mg	2%
Potassium 320mg	6%

*The % Daily Value tells you how much a nutrient in a serving of food contributes to a daily diet. 2,000 calories a day is used for general nutrition advice.

To inquire if a signed copy of the product formulation statement or Child Nutrition statement is available for this item, please contact the Tyson Foodservice Customer Relations Team at 1-800-248-9766. Or email CustomerRelations@tyson.com.

Ingredients

Chicken tenderloins CONTAINING: Up to 12% of a solution of water, salt and sodium phosphates. BREADED WITH: Bleached wheat flour, salt, dextrose, leavening (sodium aluminum phosphate, sodium bicarbonate), spices, soybean oil, dried yeast, autolyzed yeast extract, disodium inosinate and disodium guanylate, and spice extractive. BATTERED WITH: Water, bleached wheat flour, modified food starch, salt, spices, garlic powder, onion powder, autolyzed yeast extract, soybean oil, disodium guanylate, disodium inosinate. PREDUSTED WITH: Wheat flour, wheat gluten, and salt. Breading set in vegetable oil.

ALLERGENS

Wheat






UNI PRO EXCLUSIVE

Ore-Ida® Super Crunch 3/8" Regular Cut Heavy Coated Fries

1000008046 |

WHY YOU'LL LOVE IT

Heavy-textured batter provides a hearty crunch and extra-long hold time.

Product Details	Nutrition Facts	Preparation	Ingredients	Allergens
This product contains ingredients which may cause an allergic reaction to the following:				
				
Wheat				

Product Details	Nutrition Facts	Preparation	Ingredients	Allergens
Potatoes, Vegetable Oil (Contains One Or More Of The Following Oils: Canola, Soybean, Cottonseed, Sunflower, Corn), Corn Starch - Modified, Rice Flour. Contains 2% or less of Annatto (color), Bleached Enriched Wheat Flour (Flour, Niacin, Reduced Iron, Thiamine Mononitrate, Riboflavin, Folic Acid), Caramel Color, Corn Starch, Dextrin, Dextrose, Leavening (Sodium Acid Pyrophosphate, Sodium Bicarbonate), Salt, Sodium Acid Pyrophosphate Added To Maintain Natural Color, Tapioca Starch - Modified, Xanthan Gum				

Product Details	Nutrition Facts	Preparation	Ingredients	Allergens
<div><div><p>Adult Nutrition Facts:</p><p>160.0 servings per container</p><p>Serving Size 3 oz (85g)</p><p>Amount Per Serving</p><p>Calories 140</p><p>Total Fat 6g 8%</p><p>Saturated Fat 1g 5%</p><p>Mono Unsaturated Fat 2.5g</p><p>Poly Saturated Fat 2.5g</p><p>Trans Fat 0g</p></div><div><p>Cholesterol 0mg 0%</p><p>Sodium 360mg 16%</p><p>Total Carbohydrate 23g 10%</p><p>Saturated Fat 1g 19%</p><p>Dietary fiber 1g 2%</p><p>Sugars 0g 0.638%</p><p>Added Sugar 0g 0%</p><p>Protein 1g 3%</p></div><div><p>Vitamin D 0mcg 0%</p><p>Calcium 10mg 0%</p><p>Iron 0.3mg 0%</p><p>Potasslum 230mg</p><p><small>*The % Daily Value (DV) tells you how much a nutrient in a serving of food contributes to a daily diet. 2,000 calories a day is used for general nutrition advice.</small></p></div></div>				



Tyson Red Label® NAE Frozen
Fully Cooked Grilled Chicken
Breast Filets, 4 oz, 40 Pieces,
2/5 Lbs

PRODUCT CODE: 10383510928 GTIN CODE: 00023700025463

Storage Method Cook Method
Frozen **Convection**
 Microwave



- Versatile grilled breast filets can be used on sandwiches or in endless center-of-plate applications, providing great bun and plate coverage every time.
- Whole muscle breast filets provide patrons with the premium quality, bite and texture they expect from grilled chicken.
- Chicken raised with No Antibiotics Ever, No MSG and No Trans Fat delivers on the product qualities that are increasingly important to patrons.
- Simply seasoned with salt and pepper for subtle, fresh-off-the-grill flavor allows you to customize any way you choose.
- Fresh-from-the-grill appearance, complete with visible char marks, makes this product highly versatile across your menu while reducing prep time for back-of-house efficiency.
- Fully cooked product provides quick and easy preparation while minimizing food safety concerns.

Ingredients

Boneless, skinless chicken breast filets with rib meat, water, seasoning [maltodextrin, salt, sugar, flavors, vegetable stock (carrot, onion, celery), carrot powder and garlic powder], modified food starch, sodium phosphates, soy protein concentrate, sea salt.

ALLERGENS

Soy

Nutrition Facts

40 Servings Per Container

Serving Size 112g

Amount Per Serving

Calories

160

Daily Value % *

Total Fat	3.5g	4%
Saturated Fat	1g	5%
Trans Fat	0g	
Polyunsaturated Fat	1g	
Monounsaturated Fat	1g	
Cholesterol	85mg	28%
Sodium	530mg	23%
Total Carbohydrate	2g	1%
Dietary Fiber	0g	0%
Total Sugars	0g	
Includes 0g Added Sugars		0%
Protein	31g	62%
Vitamin D	0mcg	0%
Calcium	20mg	2%
Iron	1.1mg	6%
Potassium	330mg	6%

*The % Daily Value tells you how much a nutrient in a serving of food contributes to a daily diet. 2,000 calories a day is used for general nutrition advice.

To inquire if a signed copy of the product formulation statement or Child Nutrition statement is available for this item, please contact the Tyson Foodservice Customer Relations Team at 1-800-248-9766. Or email CustomerRelations@tyson.com.

80/20 Ground Beef

Nutritional Information	Nutrient	3/1 (5.3 oz)	Unit
	Energy (kcal)	383.801	Calories
	Protein	25.899	Grams
	Total Lipid (fat)	30.221	Grams
	Carbohydrate	0.000	Grams
	Fiber, total dietary	0.000	Grams
	Sugars	0.000	Grams
	Calcium	27.199	Milligrams
	Iron	2.931	Milligrams
	Sodium	99.728	Milligrams
	Vitamin C	0.000	Milligrams
	Vitamin A	21.154	IU
	Fatty acids, total saturated	11.455	Grams
	Fatty acids, total trans	1.783	Grams
	Cholesterol	107.283	Milligrams

Smith's Skinless Wiener 6" 6-1 link
3.5# NW package, 21 links per package, 6 packages per case

Ingredients:

Pork
Beef
Water
Salt
Corn Syrup Solids
Dextrose
Mustard
Paprika
Sodium Phosphate
Onion Powder
Spices
Sodium Erythorbate
Natural Flavors
Extractive of Paprika
Sodium Nitrite

Nutrition Facts

21 servings per container

Serving size 1 Link (76g)

Amount Per Serving

Calories 190

% Daily Value*

Total Fat 15g 19%

Saturated Fat 5g 25%

Trans Fat 0g

Cholesterol 35mg 12%

Sodium 760mg 33%

Total Carbohydrate 1g 0%

Dietary Fiber 0g 0%

Total Sugars 1g

Includes 0g Added Sugars 0%

Protein 11g 22%

Vitamin D 0mcg 0%

Calcium 52mg 4%

Iron 0.72mg 4%

Potassium 0mg 0%

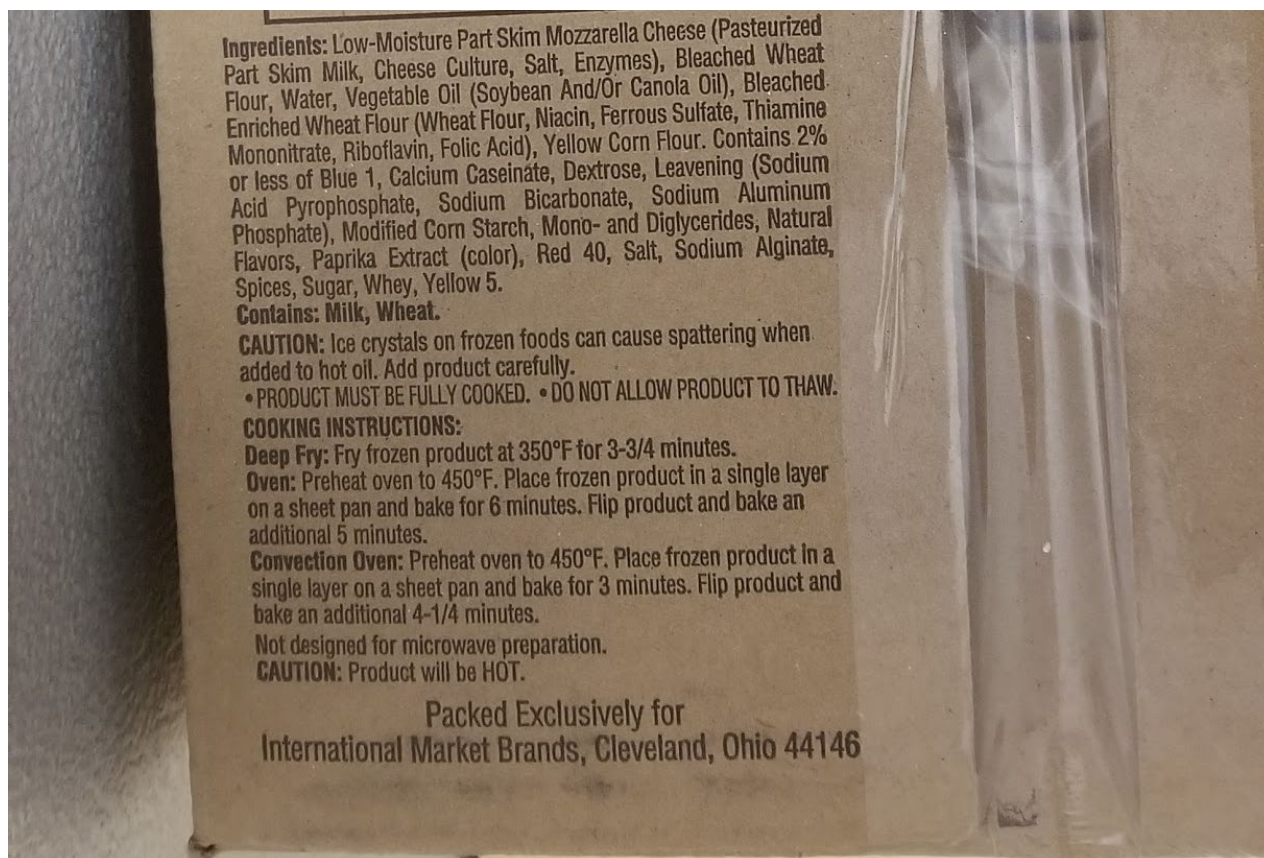
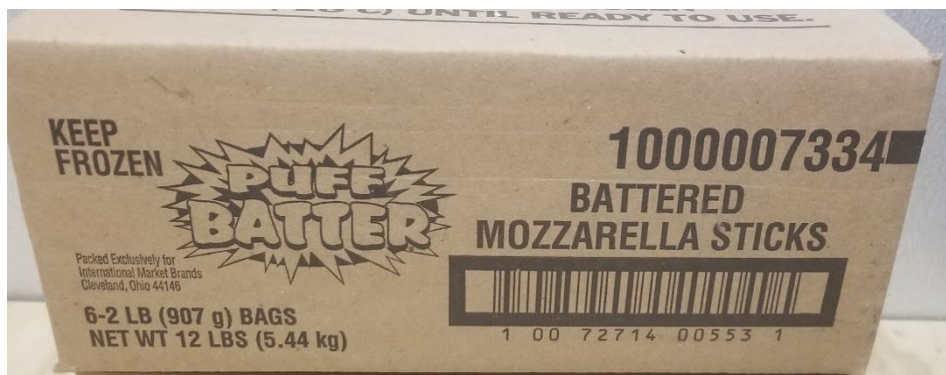
Vitamin A 4%

Vitamin C 0%

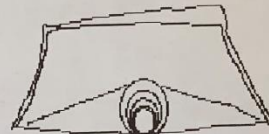
*The % Daily Value (DV) tells you how much a nutrient in a serving of food contributes to a daily diet. 2,000 calories a day is used for general nutrition advice.

Island Oasis Premium Lemonade Beverage Mix, 32 Fluid Ounce -- 12 per case.





03L 6328 1643



Unused portions in opened pouches
must be stored in the refrigerator

/08L12072 6328

For Pouch/Hose Instructions,
visit www.bgfoodservice.com

INGREDIENTS: WATER, SOYBEAN OIL, MODIFIED CORN STARCH, CHEDDAR CHEESE
(MILK, CHEESE CULTURES, SALT, ENZYMES), CONTAINS LESS THAN 2% OF SALT,
NONFAT DRY MILK, JALAPENO PEPPERS, VINEGAR, SODIUM PHOSPHATE,
MALTODEXTRIN, WHEY, CORN STARCH, GREEN CHILE PEPPERS, YEAST EXTRACT,
SODIUM CITRATE, CELLULOSE GUM, MILKFAT, DATEM, MONO- AND DIGLYCERIDES,
LACTIC ACID, ACETIC ACID, AUTOLYZED YEAST EXTRACT, NATURAL FLAVOR,
YELLOW 5, YELLOW 6

CONTAINS: MILK

706068



DISTRIBUTED BY B&G FOODS, INC,
PARSIPPANY, NJ 07054
© 2020 B & G FOODS INC. USA

4- 6 lb 11 oz (3.03 kg) BAGS - NET WT 26.75 lb (12.1 kg)

Nacho Chips



Nacho Chips





Margherita 25 lb. Case Slow-Cured Sliced Pepperoni

[Leave a review](#) Item #: 871SMI220106



Nutrition Facts

Serving Size 15 slices (28g)

Servings per Container 16

Amount Per Serving	
Calories 130	Calories From Fat 110
% Daily Value*	
Total Fat 13g	20%
Saturated Fat 5g	25%
Trans Fat 0g	
Cholesterol 20mg	7%
Sodium 510mg	21%
Total Carbohydrate 1g	0%
Dietary Fiber 0g	0%
Sugars 1g	
Protein 6g	
Vitamin A 0%	Vitamin C 0%
Calcium 0%	Iron 2%

*Percent Daily Values are based on a 2,000 calorie diet. Your daily values may be higher or lower depending on your needs.

INGREDIENTS: PORK, BEEF, SALT, CONTAINS 2% OR LESS OF DEXTROSE, FLAVORINGS, SPICES, OLEORESIN OF PAPRIKA, DEHYDRATED GRANULATED GARLIC, SODIUM NITRITE, LACTIC ACID STARTER CULTURE, BHA, BHT, CITRIC ACID.

Staganellis Pepperoni Balls

NUTRITIONAL INFORMATION

PEPPERONI BALLS

Serving Size

2 Pepperoni Balls (68g)

Servings per Container 3

Amount per Serving:

Calories 190 Calories from Fat 40

		% Daily Value
Total Fat	4g	6%
Saturated Fat	1.5g	8%
Cholesterol	5mg	2%
Sodium	410mg	17%
Total Carbohydrate	30g	10%
Dietary Fiber	1g	4%
Sugars	1g	
Protein	6g	
Vitamin A		0%
Vitamin C		0%
Calcium		0%
Iron		10%

* Percent Daily Values are based on a 2,000 calorie diet. Your daily values may be higher or lower depending on your calorie needs:

Nutrients	Calories:	2,000	2,500
Total Fat	Less Than	65g	80g
Saturated Fat	Less Than	20g	25g
Cholesterol	Less Than	300mg	300mg
Sodium	Less Than	2400mg	2400mg
Total Carbohydrate		300g	375g
Dietary Fiber		25g	30g

Calories per gram:

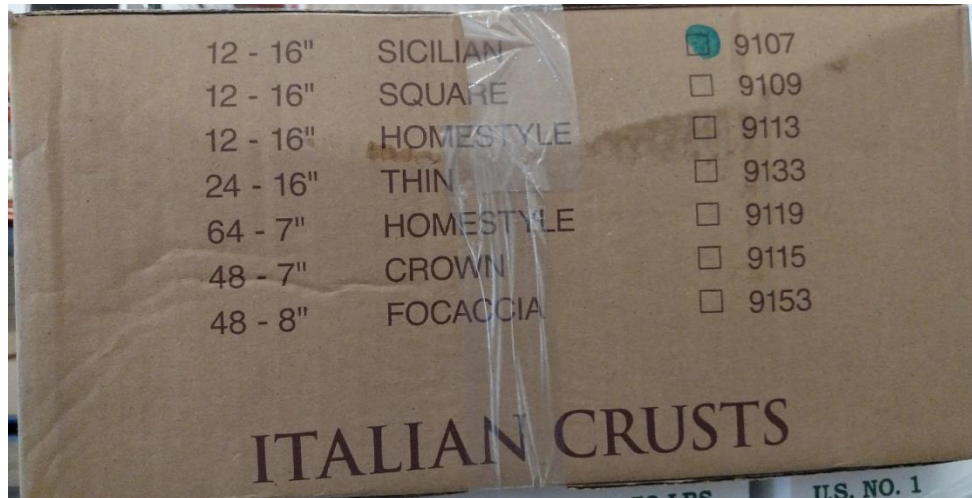
Fat 9 Carbohydrates 4 Protein 4

Ingredients: ALL PURPOSE WHITE FLOUR-ENRICHED, WATER, PEPPERONI, SALT, YEAST, SOYBEAN OIL.

Instructions: Thaw, warm on a baking sheet in preheated 400 oven for 3 to 5 minutes.



Pizza Crust



Round, Sicilian, Square, and Thin Ingredients

Flour (Wheat Flour, Malted Barley Flour, Niacin, Iron, Potassium Bromate, Thiamin Mononitrate, Riboflavin, Folic Acid), Water, Yeast (Yeast, Sorbitan Monostearate), Soybean Oil (Soybean Oil, lecithin, dimethyl polysiloxane, TBHQ and citric acid), Salt (Salt, Yellow Prussiate of Soda), Sugar, Calcium Propionate, Bromelain

Homestyle, Crown and Ciabatta Ingredients

Flour (Wheat Flour, Malted Barley Flour, Niacin, Iron, Potassium Bromate, Thiamin Mononitrate, Riboflavin, Folic Acid), Water, Olive Pomace Oil, Yeast (Yeast, Sorbitan Monostearate), Soybean Oil (Soybean Oil, lecithin, dimethyl polysiloxane, TBHQ and citric acid), Salt (Salt, Yellow Prussiate of Soda), Sugar, Calcium Propionate, Bromelain

Focaccia Ingredients

Flour (Wheat Flour, Malted Barley Flour, Niacin, Iron, Potassium Bromate, Thiamin Mononitrate, Riboflavin, Folic Acid), Water, Garlic Puree (Olive Pomace Oil, Fresh Garlic), Mozzarella (Pasteurized part skim milk, cheese cultures, salt and enzymes), Provolone (Pasteurized milk, salt, cheese cultures and enzymes) and Parmesan (Cows milk, cheese culture, salt, and enzymes) cheese, Soy Flour, Olive Pomace Oil, Dry Milk (Milk Protein Concentrate, Non-Fat Dry Milk and Lactose), Yeast (Yeast, Sorbitan Monostearate), Soybean Oil (Soybean Oil, lecithin, dimethyl polysiloxane, TBHQ and citric acid), Salt (Salt, Yellow Prussiate of Soda), Sugar, Bromelain





FULL RED®

PIZZA SAUCE
[NUTRITION INFORMATION]



Full Red® Pizza Sauce is our flavorful fresh base sauce designed to give your signature pizza sauce recipe maximum **"vine-fresh" flavor and aroma!** With bright "fire engine" red color and thick velvety texture, Full Red® has long been a New York favorite.

For optimal fresh flavor "pop," replace any water in your recipe with a can of 7/11® Ground Tomatoes for every can of Full Red® Pizza Sauce.

INGREDIENTS:

Vine-ripened fresh tomatoes, salt and naturally derived citric acid.

Nutrition Facts

51 servings per container

Serving size 1/4 cup (60g)

Amount per serving

Calories 30

% Daily Value*

Total Fat 0g 0%

Saturated Fat 0g 0%

Trans Fat 0g

Cholesterol 0mg 0%

Sodium 135mg 6%

Total Carbohydrate 7g 3%

Dietary Fiber 2g 7%

Total Sugars 5g

No Added Sugar 0%

Protein 2g

Vitamin D 0mcg 0%

Calcium 12mg 0%

Iron 0mg 0%

Potassium 335mg 8%

* The % Daily Value (DV) tells you how much a nutrient in a serving of food contributes to a daily diet. 2,000 calories a day is used for general nutrition advice.



01201

Does NOT contain: Eggs, Milk, Mustard, Peanuts, Crustaceans and Mollusks, Fish, Sesame Seeds, Soy, Sulfites, Tree Nuts, Wheat or Triticale.

Product is Gluten-Free.



Mel-O-Age



SHREDDED LOW-MOISTURE MOZZARELLA CHEESE WHOLE MILK

000945

Nutrition Facts

Serving Size 1/4 Cup (28g)
Servings Per Container 80

Amount Per Serving	
Calories	100
Calories from Fat 70	
% Daily Value*	
Total Fat	7g 11%
Saturated Fat	5g 25%
Trans Fat	0g
Cholesterol	20mg 7%
Sodium	105mg 4%
Total Carbohydrate	1g 0%
Dietary Fiber	0g 0%
Sugars	0g
Protein	6g 12%
Vitamin A	6%
Calcium	20%
Vitamin C	0%
Iron	0%

*Percent Daily Values are based on a 2,000 calorie diet. Your daily values may be higher or lower depending on your calorie needs.

	Calories	2,000	2,500
Total Fat	Less than	65g	80g
Sat Fat	Less than	20g	25g
Cholesterol	Less than	300mg	300mg
Sodium	Less than	2,400mg	2,400mg
Total Carbohydrate		300g	375g
Dietary Fiber		25g	30g
Protein		50g	65g

INGREDIENTS: LOW-MOISTURE MOZZARELLA CHEESE (CULTURED PASTEURIZED MILK, SALT, ENZYMES), AND ANTI-CAKING AGENT.

KEEP REFRIGERATED

NET WT 5 LB (2.27kg)

Distributed By: INTERNATIONAL MARKET BRANDS, INC.
Cleveland, Ohio 44146 • Plant #42-674



Nutrition Facts

16 Servings Per Container

Serving Size 1 bun (43g)

Amount Per Serving

Calories **120**

% Daily Value*

Total Fat 1.5g **2%**

Saturated Fat 0g **0%**

Trans Fat 0g

Polyunsaturated Fat 0.5g

Monounsaturated Fat 0g

Cholesterol 0mg **0%**

Sodium 250mg **11%**

Total Carbohydrate 23g **8%**

Dietary Fiber <1g **3%**

Total Sugars 3g

Includes 3g Added Sugars **6%**

Protein 4g

Vitamin D 0mcg 0% • Calcium 45mg 4%

Iron 1.2mg 6% • Potassium 35mg 0%

Thiamin 0.2mg 15% • Riboflavin 0.1mg 10%

Niacin 1.8mg 10% • Folate 70mcg DFE 20%
(40mcg folic acid)

*The % Daily Value (DV) tells you how much a nutrient in a serving of food contributes to a daily diet. 2,000 calories a day is used for general nutrition advice.

INGREDIENTS: ENRICHED WHEAT FLOUR [FLOUR, MALTED BARLEY FLOUR, REDUCED IRON, NIACIN, THIAMIN MONONITRATE (VITAMIN B1), RIBOFLAVIN (VITAMIN B2), FOLIC ACID], WATER, SUGAR, YEAST, SOYBEAN OIL, SALT, WHEAT GLUTEN, PRESERVATIVES (CALCIUM PROPIONATE, SORBIC ACID), GRAIN VINEGAR, DATEM, MONOGLYCERIDES, CELLULOSE GUM, CITRIC ACID, SOY LECITHIN.

R20-081-300819

CONTAINS WHEAT, SOY.



Nutrition Facts

16 Servings Per Container
Serving Size 1 bun (43g)

Amount per serving
Calories 120

% Daily Value*

Total Fat 1.5g	2%
Saturated Fat 0g	0%
Trans Fat 0g	
Polyunsaturated Fat 0.5g	
Monounsaturated Fat 0g	
Cholesterol 0mg	0%
Sodium 250mg	11%
Total Carbohydrate 23g	8%
Dietary Fiber <1g	3%
Total Sugars 3g	
Includes 3g Added Sugars	6%

Protein 4g

Vitamin D 0mcg 0%	Calcium 45mg 4%
Iron 1.2mg 6%	Potassium 35mg 0%
Thiamin 0.2mg 15%	Riboflavin 0.1mg 10%
Niacin 1.8mg 10%	Folate 70mcg DFE 20% (40mcg folic acid)

*The % Daily Value (DV) tells you how much a nutrient in a serving of food contributes to a daily diet. 2,000 calories a day is used for general nutrition advice.

INGREDIENTS: ENRICHED WHEAT FLOUR [FLOUR, MALTED BARLEY FLOUR, REDUCED IRON, NIACIN, THIAMIN MONONITRATE (VITAMIN B1), RIBOFLAVIN (VITAMIN B2), FOLIC ACID], WATER, SUGAR, YEAST, SOYBEAN OIL, SALT, WHEAT GLUTEN, PRESERVATIVES (CALCIUM PROPIONATE, SORBIC ACID), GRAIN VINEGAR, DATEM, MONOGLYCERIDES, CELLULOSE GUM, CITRIC ACID, SOY LECITHIN.

CONTAINS WHEAT, SOY.

R20-078-300819

