



KNOUSE FOODS COOPERATIVE INC.

1067876468 - Applesauce Unsweetened Standard

SunSource Essentials Unsweetened Applesauce is prepared from American grown apples and is naturally free from fat, cholesterol, and gluten. Can be used in baking as a substitute for oils for low fat snacks. A popular and excellent low cost fruit serving option, SunSource Essential Unsweetened Applesauce is a great start towards fulfilling your recommended daily requirements of Fruits.



\* Benefits

SunSource Essentials Unsweetened Applesauce is prepared from a blend of apple varieties which have been peeled, cored and processed for a consistent flavor profile, thickness, and golden color. No added sugars or corn syrup make this a healthy fruit option for any menu or meal.

Ingredients

Apples and water, ascorbic acid (Vitamin C) to maintain color

⚠ Allergens

Free From:

- crustaceans
- eggs
- fish
- milk
- peanuts
- sesame
- soy
- tree nuts
- wheat

Nutrition Facts

Servings per Container 24  
Serving size 1/2cup (122g)

Amount per serving  
Calories 50

	% Daily Value*
Total Fat 0g	0%
Saturated Fat 0g	0%
Trans Fat 0g	
Cholesterol 0mg	0%
Sodium 10mg	0%
Total Carbohydrate 13g	5%
Dietary Fiber 1g	4%
Total Sugars 11g	
Includes 0g Added Sugar	0%
Protein 0g	
Vitamin D 0µg	0%
Calcium 6mg	0%
Iron 0mg	0%
Potassium 119mg	3%

\* The % Daily Value (DV) tells you how much a nutrient in a serving of food contributes to a daily diet. 2,000 calories a day is used for general nutrition advice.

Handling Suggestions

Store at ambient temperature. Avoid freezing or prolonged storage above 90 F and below 40 F. After opening transfer into covered plastic storage container and refrigerate; best if used within 10 days.

Serving Suggestions

SunSource Essentials Unsweetened Applesauce can be used as a fruit serving, side dish, or ingredient.

Prep & Cooking Suggestions

Ready to eat and or use according to recipe.

✎ Product Specifications

Brand	Manufacturer	Product Category
Sunsource Essentials	KNOUSE FOODS COOPERATIVE INC.	Applesauce & Fruit Sauce

MFG #	SPC #	GTIN	Pack	Pack Desc.
FFASU8090ESS01	1067876468	10018687000432		6/#10 cans

Gross Weight	Net Weight	Country of Origin	Kosher	Child Nutrition
44.75lb	39lb	USA	Yes	No

Shipping Information						
Length	Width	Height	Volume	TlxHI	Shelf Life	Storage Temp From/To
18.5in	12.25in	7in	0.92ft3	7x8	1095DAYS	40°F / 80°F



KNOUSE FOODS COOPERATIVE INC.

1067876468 - Applesauce Unsweetened Standard

SunSource Essentials Unsweetened Applesauce is prepared from American grown apples and is naturally free from fat, cholesterol, and gluten. Can be used in baking as a substitute for oils for low fat snacks. A popular and excellent low cost fruit serving option, SunSource Essential Unsweetened Applesauce is a great start towards fulfilling your recommended daily requirements of Fruits.

**SUNSOURCE ESSENTIALS UNSWEETENED APPLESAUCE - Grade B**

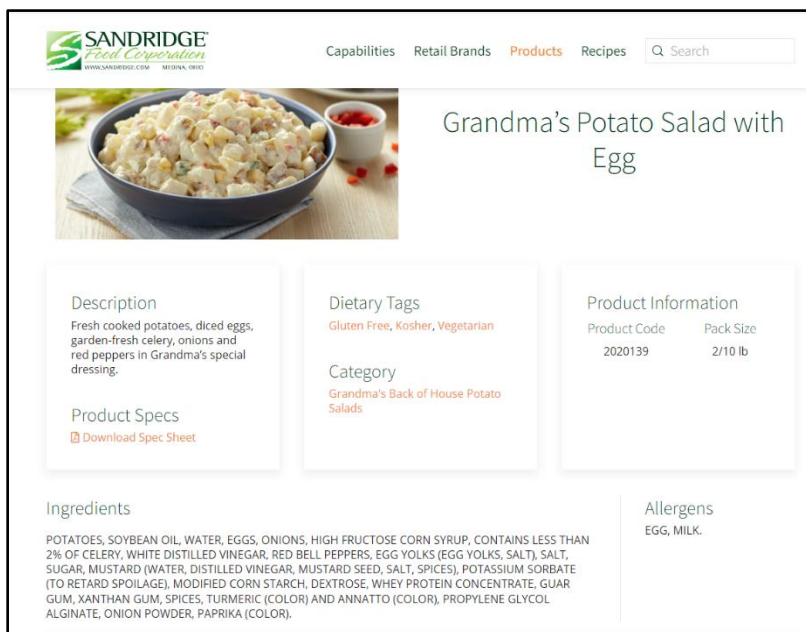


Nutrition Analysis - By Serving

Calories	50kcal	Total Fat	0g	Sodium	10mg
Protein	0g	Trans Fats	0g	Calcium	6mg
Total Carbohydrates...	13g	Saturated Fat	0g	Iron	0mg
Sugars	11g	Added Sugars	0g	Potassium	119mg
Dietary Fiber	1g	Polyunsaturated Fat		Zinc	
Lactose		Monounsaturated Fat		Phosphorus	
Sucrose		Cholesterol	0mg		
Vitamin A(IU)•		Vitamin D	0µg	Thiamin	
Vitamin A(RE)		Vitamin E		Niacin	
Vitamin C		Folate		Riboflavin	
Magnesium		Vitamin B-6		Vitamin B-12•	
Monosodium		Sulphites		Nitrates	

 Additional Images





Revised: 9/18/19

# Grandma's Retail Potato Salad with Egg

Fresh cooked potatoes, diced eggs, garden-fresh celery, onions and red peppers in Grandma's special dressing.

## Nutrition Facts

servings per container  
Serving size 2/3 cup (142g)

Amount per serving  
**Calories 270**

	% Daily Value*
Total Fat 18g	23%
Saturated Fat 3g	15%
Trans Fat 0g	
Cholesterol 35mg	12%
Sodium 420mg	18%
Total Carbohydrate 23g	8%
Dietary Fiber 2g	7%
Total Sugars 4g	
Includes 3g Added Sugars	6%
Protein 3g	
Vitamin D 0.2mcg	2%
Calcium 20mg	2%
Iron 0.5mg	2%
Potassium 400mg	8%

\*The % Daily Value tells you how much a nutrient in a serving of food contributes to a daily diet. 2,000 calories a day is used for general nutrition advice.

INGREDIENTS: POTATOES, SOYBEAN OIL, WATER, EGGS, ONIONS, HIGH FRUCTOSE CORN SYRUP, CONTAINS LESS THAN 2% OF CELERY, WHITE DISTILLED VINEGAR, RED BELL PEPPERS, EGG YOLKS (EGG YOLKS, SALT), SALT, SUGAR, MUSTARD (WATER, DISTILLED VINEGAR, MUSTARD SEED, SALT, SPICES), POTASSIUM SORBATE (TO RETARD SPOilage), MODIFIED CORN STARCH, DEXTROSE, WHEY PROTEIN CONCENTRATE, GUAR GUM, XANTHAN GUM, SPICES, TURMERIC (COLOR) AND ANNATTO (COLOR), PROPYLENE GLYCOL ALGINATE, ONION POWDER, PAPRIKA (COLOR).

CONTAINS EGG, MILK.

### Six, 3 lb. Printed Containers Per Case

Product Code:	Product UPC:	Case UPC:	Case Dimensions:	Case WT:	Gross WT:	Cube:	Layers:	Case Layer:	Total Cases:
2040139	0 29736 0139 9	00 29736 01396 28	17.632" x 6.133" x 9.453"	18 lb.	18.7 lb.	0.59 cu ft	4	16	64

### Six, 2 lb Printed Containers Per Case

Product Code:	Product UPC:	Case UPC:	Case Dimensions:	Case WT:	Gross WT:	Cube:	Layers:	Case Layer:	Total Cases:
2620139	0 72106 0139 9	00 072106 01396 3	17.757" x 6.133" x 6.38"	12 lb.	12.5 lb.	0.40 cu ft	7	16	112

### Twelve, 1 lb. Plastic Containers Per Case

Product Code:	Product UPC:	Case UPC:	Case Dimensions:	Case WT:	Gross WT:	Cube:	Layers:	Case Layer:	Total Cases:
2160139	0 29736 30139 7	00 29736 01393 14	6.945" x 6.945" x 9.265"	12 lb.	12.5 lb.	0.43 cu ft	5	20	100

### Handling:

Cold Storage:  
Store at 33 - 38°F

### Trends:

#### Consumer Usage

Last Served, How Were They Prepared

Category	Prepared (%)	Not Prepared (%)
Salad	85	15
Side Dish	75	25
Snack	65	35
Appetizer	55	45
Main Course	45	55
Breakfast	35	65
Other	25	75

### Recipe:

Mix in diced chorizo sausage for a spicy kick.

### Notes:

Source: 2017 ConsumerA&U

**Ve** VEGAN **V** VEGETARIAN **OF** DAIRY FREE **GF** GLUTEN FREE **K** KOSHER

**LF** LOW FAT **PF** PRESERVATIVE FREE **NF** NO ADDED PRESERVATIVES **HF** GOOD SOURCE OF FIBER

**SANDRIDGE**  
Specialty Foods  
SANDRIDGE.COM 800.441.4411

INFORMATION SUBJECT TO CHANGE. PLEASE  
REFER TO ON-PACKAGE LABEL FOR MOST  
CURRENT INFORMATION.



# Grandma's Retail Macaroni Salad

An old-fashioned blend of macaroni, diced celery and shredded carrots in Grandma's secret dressing.



## Nutrition Facts

servings per container  
Serving size **2/3 cup (134g)**

Amount per serving  
**Calories 400**

% Daily Value\*

**Total Fat** 32g **41%**

Saturated Fat 5g **25%**

Trans Fat 0.5g

**Cholesterol** 65mg **22%**

**Sodium** 640mg **28%**

**Total Carbohydrate** 23g **8%**

Dietary Fiber 1g **4%**

Total Sugars 7g

Includes 6g Added Sugars **12%**

**Protein** 5g

Vitamin D 0.4mcg **2%**

Calcium 20mg **2%**

Iron 1.1mg **6%**

Potassium 120mg **2%**

\*The % Daily Value tells you how much a nutrient in a serving of food contributes to a daily diet. 2,000 calories a day is used for general nutrition advice.



INGREDIENTS: COOKED ENRICHED MACARONI PRODUCT (SEMOLINA [WHEAT], ENRICHED WITH NIACIN, FERROUS SULFATE, THIAMIN MONONITRATE, RIBOFLAVIN, FOLIC ACID), SOYBEAN OIL, EGGS, SWEET RELISH (PICKLES, FRUCTOSE, VINEGAR, WATER, SALT, XANTHAN GUM, RED PEPPERS, NATURAL FLAVORS, SPICES, ALUM [FIRMING AGENT], TURMERIC [COLOR]), WATER, ONIONS, EGG YOLKS (EGG YOLKS, SALT), HIGH FRUCTOSE CORN SYRUP, CONTAINS LESS THAN 2% OF CELERY, SUGAR, WHITE DISTILLED VINEGAR, MUSTARD (WATER, DISTILLED VINEGAR, MUSTARD SEED, SALT, SPICES), CARROTS, SALT, POTASSIUM SORBATE (TO RETARD SPOILAGE), GARLIC POWDER, SPICE.

CONTAINS: EGG, WHEAT.

### Six, 3 lb. Plastic Containers Per Case

Product Code:	Product UPC:	Case UPC:	Case Dimensions:	Case WT:	Gross WT:	Cube:	Layers:	Case Layer:	Total Cases:
2040239	0 29736 60239 5	00 29736 02396 18	17.632" x 6.133" x 9.453"	18 lb.	18.6 lb.	0.59 cuft	4	16	64

### Six, 2 lb Plastic Containers Per Case

Product Code:	Product UPC:	Case UPC:	Case Dimensions:	Case WT:	Gross WT:	Cube:	Layers:	Case Layer:	Total Cases:
2620239	0 72106 60239 6	00 072106 02396 2	17.57" x 6.133" x 6.890"	12 lb.	12.4 lb.	0.43 cuft	7	16	112

### Twelve, 1 lb. Plastic Containers Per Case

Product Code:	Product UPC:	Case UPC:	Case Dimensions:	Case WT:	Gross WT:	Cube:	Layers:	Case Layer:	Total Cases:
2160239	0 29736 30239 4	00 29736 02393 04	8.945" x 8.945" x 9.703"	12 lb.	12.5 lb.	0.45 cuft	4	20	80

### Handling:

**Cold Storage:**  
Store at 33 - 38° F

### Trends:

"The new 2015-2020 Dietary Guidelines encourage the consumption of all types of grains for the many nutrients they provide."

- Diane Welland, Nutrition Communications Manager for the National Pasta Association.

### Recipe:

Add crispy bacon and fresh dill.

Notes: \_\_\_\_\_

\_\_\_\_\_

\_\_\_\_\_

**Ve** VEGAN **V** VEGETARIAN **DF** DAIRY FREE **GF** GLUTEN FREE **K** KOSHER

**LF** LOW FAT **PF** PRESERVATIVE FREE **NAP** NO ADDED PRESERVATIVES **HF** GOOD SOURCE OF FIBER



INFORMATION SUBJECT TO CHANGE. PLEASE REFER TO ON-PACKAGE LABEL FOR MOST CURRENT INFORMATION.

# Grandma's Cole Slaw

A blend of fresh cabbage and diced carrots in Grandma's sweetly flavored secret dressing.



## Nutrition Facts

servings per container  
**Serving size 1/2 cup (103g)**

Amount per serving  
**Calories 210**

% Daily Value\*

**Total Fat 14g 18%**

**Saturated Fat 2g 10%**

**Trans Fat 0g**

**Cholesterol 15mg 5%**

**Sodium 250mg 11%**

**Total Carbohydrate 20g 7%**

**Dietary Fiber 2g 7%**

**Total Sugars 17g**

**Includes 15g Added Sugars 30%**

**Protein 1g**

**Vitamin D 0.1mcg 0%**

**Calcium 30mg 2%**

**Iron 0.4mg 2%**

**Potassium 170mg 4%**

\*The % Daily Value tells you how much a nutrient in a serving of food contributes to a daily diet. 2,000 calories a day is used for general nutrition advice.

Calories per gram:  
Fat 9 • Carbohydrate 4 • Protein 4



INGREDIENTS: CABBAGE, SOYBEAN OIL, FRUCTOSE, SUGAR, CARROTS, CONTAINS LESS THAN 2% OF EGG YOLKS (EGG YOLKS, SALT), HIGH FRUCTOSE CORN SYRUP, WHITE DISTILLED VINEGAR, MUSTARD (WATER, DISTILLED VINEGAR, MUSTARD SEED, SALT, SPICES), SALT, PEA FIBER, ERYTHORBIC ACID (TO RETAIN COLOR), WATER, POTASSIUM SORBATE (TO RETARD SPOILAGE), NATURAL FLAVORS, SODIUM ACID SULFATE, CITRIC ACID, XANTHAN GUM, COLOR (WATER, YELLOW 5 AND 6, BLUE 1, CITRIC ACID, SODIUM BENZOATE [PRESERVATIVE]).

CONTAINS EGG.

### Two, 10 lb. Paper Board Containers Per Case

Product Code:	Product UPC:	Case UPC:	Case Dimensions:	Case WT:	Gross WT:	Cube:	Layers:	Case Layer:	Total Cases:
2020399	029736 00399 4	0029736 20399 88	11.820" x 6.070" x 11.765"	20 lb.	20.5 lb.	0.49 cuft	3	24	72

### One, 10 lb. Paper Board Containers Per Case

Product Code:	Product UPC:	Case UPC:	Case Dimensions:	Case WT:	Gross WT:	Cube:	Layers:	Case Layer:	Total Cases:
2010399	029736 00399 4	0029736 20399 10	9.908" x 5.97" x 5.904"	10 lb.	10.3 lb.	0.20 cuft	7	32	224

#### Handling:

**Cold Storage:**  
Store at 33 - 38° F

#### Trends:

55% of consumers eat prepared foods within an hour of purchase.

#### Source:

[www.refrigeratedfrozenfood.com](http://www.refrigeratedfrozenfood.com)

#### Recipe:

Add fresh lime juice, cilantro and jalapenos for a tasty fish taco topping.

Notes: \_\_\_\_\_

**Ve** VEGAN **V** VEGETARIAN **DF** DAIRY FREE **GF** GLUTEN FREE **K** KOSHER

**LF** LOW FAT **PF** PRESERVATIVE FREE **NAT** NO ADDED PRESERVATIVES **HF** GOOD SOURCE OF FIBER

**SANDRIDGE**  
Food Corporation  
WWW.SANDRIDGE.COM MEDINA, OHIO

INFORMATION SUBJECT TO CHANGE. PLEASE  
REFER TO ON-PACKAGE LABEL FOR MOST  
CURRENT INFORMATION.



## 01619 - BUSH'S Bean Pot Baked Beans 6-117 OZ

Our original flavored beans rank #1 among your customers. This family recipe is slow-cooked with cured bacon, fine brown sugar, a select blend of spices, and of course, our secret ingredients. BUSH'S BEST Bean Pot Baked Beans are the perfect complement to grilled steak, chops, chicken and fish, and they also make a great ingredient.

Brand: BUSH'S BEST®



### Nutrition Facts

Serving Size 1/2 cup (130g)  
Servings Per Container 26

#### Amount Per Serving

**Calories** 140

**Calories from Fat** 10

#### % Daily Value\*

**Total Fat** 1 g 2%

Saturated Fat 0 g 0%

Trans Fat 0 g

**Cholesterol** 0 mg 0%

**Sodium** 550 mg 23%

**Total Carbohydrate** 29 g 10%

Dietary Fiber 5 g 20%

Sugars 12 g

**Protein** 6 g

Vitamin A 0 % • Vitamin C 0 %

Calcium 4 % • Iron 10 %

\*Percent Daily Values are based on a 2,000 calorie diet. Your daily values may be higher or lower depending on your calorie needs.

Calories: 2,000 2,500

Total Fat Less than 65g 80g

Sat Fat Less than 20g 25g

Cholesterol Less than 300mg 300mg

Sodium Less than 2,400mg 2,400mg

Total 300g 375g

Carbohydrate 300g 375g

Dietary 25g 30g

Fiber 25g 30g

Calories per gram:

Fat 9 • Carbohydrate 4 • Protein 4

### Ingredients

Prepared White Beans, Water, Brown Sugar, Salt, Mustard (Vinegar, Water, Mustard Seed, Salt, Turmeric, Paprika), Bacon, Modified Corn Starch, Onion Powder, Caramel Color, Spices, Garlic Powder, Natural Flavor.

### Product Specifications

GTIN	10039400016196	Case Net Weight	43.8800 LB
Item UPC	01619	Case L,W,H	18.750 IN, 12.500 IN, 7.000 IN
Unit Size	6 / 117OZ	Cube	0.95 CF
Shelf Life (Total / At Shipping)	730 Days / 90 Days	Tie x High	8 x 7
Case Gross Weight	48.3000 LB	Kosher Status	No

### Each Specifications

GTIN	00039400016199	Case Net Weight	117.0000 OZ
Item UPC		Case L,W,H	6.190 IN, 6.190 IN, 7.000 IN
Unit Size	1 / 117OZ	Cube	0.16 CF
Shelf Life (Total / At Shipping)	730 Days / 90 Days	Tie x High	0 x 0
Case Gross Weight	128.0000 OZ	Kosher Status	

### Preparation and Cooking

Empty contents into saucepan. Heat to simmer

### Serving Suggestions

Heat and serve

### Packaging and Storage

Store in a clean dry place

### Allergens

FREE FROM:

Eggs or Egg Derivatives, Fish or Fish Derivatives, Milk or Milk Derivatives, Peanuts or Peanut Derivatives, Sesame seeds or Sesame seed Derivatives, Shellfish or Shellfish Derivatives, Soybeans or Soybean Derivatives, Treenuts or Treenut Derivatives, Wheat or Wheat Derivatives

### Barcodes

Case Barcode



10039400016196

Each Barcode



0 39400 01619 9

## Product Data Sheet

### CAVALIER CREAMY LIQUID FRYING SHORTENING

**PRODUCT CODE:** 22235-CV

**KOSHER:** O.U. Pareve

**PRODUCT DESCRIPTION:** Good for frying

**INGREDIENT STATEMENT:** Soybean Oil, Hydrogenated Soybean Oil, TBHQ and Citric Acid Added to Help Preserve Freshness, Dimethylpolysiloxane, an antifoaming agent added.

**ALLERGEN:** None

#### ANALYTICAL PARAMETERS:

Color	1.5 R, Max
Free Fatty Acid (%oleic)	0.05 Max
Peroxide Value (meq/kg)	1.0 Max
Iodine Value	110 Min
% Water	0.05 Max
Flavor	Bland

#### MICROBIOLOGICAL:

Micro-Organism cannot grow in oil. No Micro-Organism in Oil

Nutrition		Amount/Serving	% Daily Value	Amount/Serving	% Daily Value	% Daily Value
<b>Facts</b>		Total Fat 14g	18%	Total Carbohydrate 0g	0%	(DV) tells you how much a nutrient in a serving of food contributes to a daily diet 2000
1134 serving per container		Saturated Fat 2.5g	13%	Dietary Fiber 0g	0%	
Serving size 1 Tbsp (14g)		Trans Fat 0g		Total Sugar 0g	0%	
		Polyunsaturated Fat 8g		Include 0g added sugars	0%	
		Monounsaturated Fat 3g		Protein 0g		Calories a day is used for general nutrition advice
<b>Calories</b>		Cholesterol 0 mg	0%			
<b>120</b>		Sodium 0mg	0%			
Per Serving		Vitamin D 0mcg		Iron 0mg		
		Calcium 0 mg		Potassium 0mg		

**Shelf Life:** 1 Year 365 days

**Storage:** Store at Ambient temperature

#### PACKAGE SIZES:

35 Pound

#### Case SIZE (LWH)

9 1/2" x 9 7/16" x 15 9/16"

#### CU.FT

0.81

#### TI X HI

20 X 3

**Please Note:** The only item that we fry in the fryers with the above oil is the Chicken Tenders. There is no cross-frying with other frozen items in the Catering Department in our Middle Cookhouse Facility.

# Smith's<sup>®</sup>

SINCE 1927

Good Taste  
Never Goes Out of Style.

## Skinless Wieners

Naturally Smoked



U.S.  
INSPECTED  
AND PASSED BY  
DEPARTMENT OF  
AGRICULTURE  
EST. 9370

**All the Flavor with 1/3 Less Fat**

than wieners in USDA handbook 8. Fat has been lowered from 13g to 9g per serving.

### Nutrition Facts

Serv. Size: (45g)  
Serv. per Container: 10  
Calories 110  
Calories from Fat 80

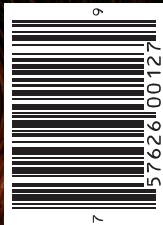
Amount/serving	%DV*	Amount/serving	%DV*
<b>Total Fat</b> 9g	13%	<b>Total Carbohydrate</b> 2g	1%
Saturated Fat 3g	15%	Dietary Fiber 0g	0%
Trans Fats 0g		Sugars 1g	
<b>Cholesterol</b> 20mg	6%	<b>Protein</b> 6g	
<b>Sodium</b> 460mg	19%		
Vitamin A 2% • Vitamin C 0% • Calcium 2% • Iron 2%			

\* Percent Daily Values are based on a 2,000 calorie diet.

### Ingredients:

Pork, Beef,  
Water, Salt,  
Corn Syrup  
Solids, Dextrose,  
Mustard, Paprika,  
Sodium Phosphate,  
Onion Powder, Spices,  
Sodium Erythorbate,  
Natural Flavors,  
Extractive of Paprika,  
Sodium Nitrite

**FULLY COOKED**  
Consume within 5 days of opening.  
**KEEP REFRIGERATED**



SINCE 1927 WE'VE GUARANTEED YOUR SATISFACTION!  
Smith Provision Co., Inc., Erie, PA 16501-1566  
Questions or comments? Contact us at 800-334-9151  
or [www.smithhotdogs.com](http://www.smithhotdogs.com)

**NET WT. 16 OZ. (1LB.)**

KEEP REFRIGERATED  
R1

NP777



## RANCH DRESSING <sup>®</sup> D

INGREDIENTS: SOYBEAN OIL, WATER, CULTURED BUTTERMILK, EGG YOLK, DISTILLED VINEGAR, CONTAINS LESS THAN 2% OF SALT, MONOSODIUM GLUTAMATE, MODIFIED CORN STARCH, BUTTERMILK SOLIDS, SUGAR, GARLIC,\* XANTHAN GUM, SPICE, CITRIC ACID, ONION,\* SORBIC ACID (PRESERVATIVE), CALCIUM DISODIUM EDTA (TO PROTECT FLAVOR), MILK, NATURAL FLAVOR, EGG WHITES, \*DRIED. CONTAINS: EGG, MILK.

Packed for: International Market Brands, Inc., Cleveland, Ohio 44114

**Net Contents: 1 Gallon (3.79 Liters)**

### Nutrition Facts

About 1.28 servings per container  
Serving size 2 Tbsp (28g)

Amount per serving  
**Calories 100**

Total Fat	17g
Saturated Fat	1.5g
Trans Fat	0g
Cholesterol	10mg
Sodium	250mg
Total Carbohydrate	1g
Dietary Fiber	0g
Total Sugars	1g
Includes 1g Added Sugar	

### Protein 0g

Vit. D 0.00mg 0%

Total Comp. 0%

\*Percent Daily Values are based on a diet of other people's secrets.

© 2017 International Market Brands, Inc.

4 1359 563 5

# Tyson® Uncooked Savory Chicken Tenderloins

PRODUCT CODE: 10761560082 GTIN CODE: 00023700688897

Storage Method Cook Method

**Frozen Deep Fry**

- Made with premium, whole-muscle chicken.
- Vacuum marinated for uniform flavor and moisture throughout.
- Coated with seasoned wheat flour.
- Consistently portioned for easy preparation and lower labor costs.



## Nutrition Facts

35 Servings Per Container

Serving Size 128g

Amount Per Serving

**Calories 220**

Daily Value % \*

<b>Total Fat</b> 8g	<b>10%</b>
Saturated Fat 1.5g	8%
Trans Fat 0g	
Polyunsaturated Fat 4g	
Monounsaturated Fat 2g	
<b>Cholesterol</b> 40mg	<b>13%</b>
<b>Sodium</b> 840mg	<b>37%</b>
<b>Total Carbohydrate</b> 17g	<b>6%</b>
Dietary Fiber 0g	0%
Total Sugars 0g	
Includes 0g Added Sugars	0%
<b>Protein</b> 21g	<b>42%</b>
<b>Vitamin D</b> 0mcg	<b>0%</b>
<b>Calcium</b> 10mg	<b>0%</b>
<b>Iron</b> 0.4mg	<b>2%</b>
<b>Potassium</b> 320mg	<b>6%</b>

\*The % Daily Value tells you how much a nutrient in a serving of food contributes to a daily diet. 2,000 calories a day is used for general nutrition advice.

To inquire if a signed copy of the product formulation statement or Child Nutrition statement is available for this item, please contact the Tyson Foodservice Customer Relations Team at 1-800-248-9766. Or email [CustomerRelations@tyson.com](mailto:CustomerRelations@tyson.com).

## Ingredients

Chicken tenderloins CONTAINING: Up to 12% of a solution of water, salt and sodium phosphates. BREADED WITH: Bleached wheat flour, salt, dextrose, leavening (sodium aluminum phosphate, sodium bicarbonate), spices, soybean oil, dried yeast, autolyzed yeast extract, disodium inosinate and disodium guanylate, and spice extractive. BATTERED WITH: Water, bleached wheat flour, modified food starch, salt, spices, garlic powder, onion powder, autolyzed yeast extract, soybean oil, disodium guanylate, disodium inosinate. PREDUSTED WITH: Wheat flour, wheat gluten, and salt. Breading set in vegetable oil.

### ALLERGENS

Wheat



Hamburger Patties - Waldameer Catering

*80/20 Ground Beef*

Nutritional Information	Nutrient	5/1 (3.2oz)	Unit
	Energy (kcal)	265.805	Calories
	Protein	14.270	Grams
	Total Lipid (fat)	22.680	Grams
	Carbohydrate	0.000	Grams
	Fiber, total dietary	0.000	Grams
	Sugars	0.000	Grams
	Calcium	19.051	Milligrams
	Iron	1.624	Milligrams
	Sodium	59.874	Milligrams
	Vitamin C	0.000	Milligrams
	Vitamin A	12.701	IU
	Fatty acids, total saturated	8.680	Grams
	Fatty acids, total trans	1.361	Grams
	Cholesterol	68.039	Milligrams



## Nutrition Facts

16 Servings Per Container

Serving Size 1 bun (43g)

Amount per serving

**Calories 120**

% Daily Value\*

Total Fat 1.5g 2%

Saturated Fat 0g 0%

Trans Fat 0g

Polyunsaturated Fat 0.5g

Monounsaturated Fat 0g

Cholesterol 0mg 0%

Sodium 250mg 11%

Total Carbohydrate 23g 8%

Dietary Fiber <1g 3%

Total Sugars 3g

Includes 3g Added Sugars 6%

**Protein 4g**

Vitamin D 0mcg 0% • Calcium 45mg 4%

Iron 1.2mg 6% • Potassium 35mg 0%

Thiamin 0.2mg 15% • Riboflavin 0.1mg 10%

Niacin 1.8mg 10% • Folate 70mcg DFE 20%  
(40mcg folic acid)

\*The % Daily Value (DV) tells you how much a nutrient in a serving of food contributes to a daily diet. 2,000 calories a day is used for general nutrition advice.

INGREDIENTS: ENRICHED WHEAT FLOUR [FLOUR, MALTED BARLEY FLOUR, REDUCED IRON, NIACIN, THIAMIN MONONITRATE (VITAMIN B1), RIBOFLAVIN (VITAMIN B2), FOLIC ACID], WATER, SUGAR, YEAST, SOYBEAN OIL, SALT, WHEAT GLUTEN, PRESERVATIVES (CALCIUM PROPIONATE, SORBIC ACID), GRAIN VINEGAR, DATEM, MONOGLYCERIDES, CELLULOSE GUM, CITRIC ACID, SOY LECITHIN.

**CONTAINS WHEAT, SOY.**

R20-078-300819



## Nutrition Facts

16 Servings Per Container

**Serving Size** 1 bun (43g)

**Amount Per Serving**

**Calories** **120**

% Daily Value\*

**Total Fat** 1.5g **2%**

Saturated Fat 0g **0%**

*Trans* Fat 0g

Polyunsaturated Fat 0.5g

Monounsaturated Fat 0g

**Cholesterol** 0mg **0%**

**Sodium** 250mg **11%**

**Total Carbohydrate** 23g **8%**

Dietary Fiber <1g **3%**

Total Sugars 3g

Includes 3g Added Sugars **6%**

**Protein** 4g

Vitamin D 0mcg 0% • Calcium 45mg 4%

Iron 1.2mg 6% • Potassium 35mg 0%

Thiamin 0.2mg 15% • Riboflavin 0.1mg 10%

Niacin 1.8mg 10% • Folate 70mcg DFE 20%  
(40mcg folic acid)

\*The % Daily Value (DV) tells you how much a nutrient in a serving of food contributes to a daily diet. 2,000 calories a day is used for general nutrition advice.

INGREDIENTS: ENRICHED WHEAT FLOUR [FLOUR, MALTED BARLEY FLOUR, REDUCED IRON, NIACIN, THIAMIN MONONITRATE (VITAMIN B1), RIBOFLAVIN (VITAMIN B2), FOLIC ACID], WATER, SUGAR, YEAST, SOYBEAN OIL, SALT, WHEAT GLUTEN, PRESERVATIVES (CALCIUM PROPIONATE, SORBIC ACID), GRAIN VINEGAR, DATEM, MONOGLYCERIDES, CELLULOSE GUM, CITRIC ACID, SOY LECITHIN.

R20-081-300819

**CONTAINS WHEAT, SOY.**

Heinz Ketchup Vol-Pak, 3 Gallon



**INGREDIENTS: TOMATO CONCENTRATE FROM RED RIPE TOMATOES, DISTILLED VINEGAR, HIGH FRUCTOSE CORN SYRUP, CORN SYRUP, SALT, SPICE, ONION POWDER, NATURAL FLAVORING.**

Nutrition			⌵	
Amount Per Serving	Value	Daily (%)		
Calories	20 kcal			-
Total Fat	0 g			0
Saturated Fat	0 g			0
Trans Fat	0 g			-
Cholesterol	0 mg			0
Sodium	180 mg			8
Total Carbohydrates	5 g			2
Dietary Fiber	-			-
Total Sugars	4 g			-
Added Sugar	4 g			7
Protein	0 g			0
Vitamin C	-			-
Vitamin D	0 mcg			0
Calcium	0 mg			0
Iron	0 mg			0
Potassium	0 mg			0

20

kcal

Calories

0g

Protein

0g

Fat

4g

Sugars

Serving size: 1 Tbsp (17g)

## Ingredients

DISTILLED WHITE VINEGAR, MUSTARD SEED, WATER, SALT, TURMERIC, NATURAL FLAVOR AND SPICES.

## Nutrition Facts

Serving Size 1 tsp (5g)  
Servings Per Container about 588

**Amount Per Serving**

**Calories 0** Calories from Fat 0

**% Daily Value\***

**Total Fat** 0g **0%**

Saturated Fat 0g **0%**

Trans Fat 0g

**Cholesterol** 0mg **0%**

**Sodium** 60mg **3%**

**Total Carbohydrate** 0g **0%**

Dietary Fiber 0g **0%**

Sugars 0g

**Protein** 0g

Vitamin A 0% • Vitamin C 0%

Calcium 0% • Iron 0%

\*Percent Daily Values are based on a 2,000

calorie diet. Your daily values may be higher or

lower depending on your calorie needs:

Calories: 2,000 2,500

Total Fat Less than 65g 80g

Saturated Fat Less than 20g 25g

Cholesterol Less than 300mg 300mg

Sodium Less than 2,400mg 2,400mg

Total Carbohydrate 300g 375g

Dietary Fiber 25g 30g

## INGREDIENTS:

DISTILLED WHITE VINEGAR,  
MUSTARD SEED, WATER, SALT,  
TURMERIC, NATURAL FLAVOR  
AND SPICES.

MFD. BY  
HEINZ NORTH AMERICA  
DIVISION OF  
**H. J. Heinz Co., L.P.**  
PITTSBURGH, PA. 15222



Questions/Comments?  
Call 1-800-255-5750.

For best results, refrigerate after opening.

Shake well before first use.

Best if used by date on cap.

[www.HeinzKetchup.com](http://www.HeinzKetchup.com).



0 13000 65220 9

35332666



## Nutrition Facts

Pickled cucumber

Sources include: USDA

Amount Per 1 slice (7 g) ▾

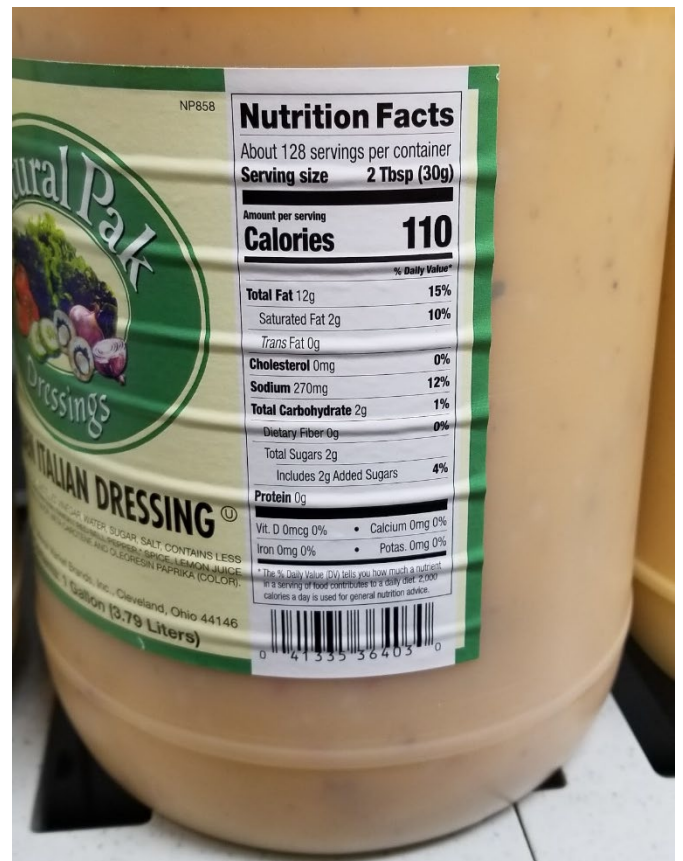
Calories 1

	% Daily Value*
<b>Total Fat</b> 0 g	0%
Saturated fat 0 g	0%
<b>Cholesterol</b> 0 mg	0%
<b>Sodium</b> 85 mg	3%
<b>Potassium</b> 2 mg	0%
<b>Total Carbohydrate</b> 0.2 g	0%
Dietary fiber 0.1 g	0%
Sugar 0.1 g	
<b>Protein</b> 0 g	0%
Vitamin C 0%	Calcium 0%
Iron 0%	Vitamin D 0%
Vitamin B6 0%	Cobalamin 0%
Magnesium 0%	

\*Percent Daily Values are based on a 2,000 calorie diet. Your daily values may be higher or lower depending on your calorie needs.

Dill pickle slices  
37605





## 36118 – 4/1gal Sweet Bubba's Original BBQ Sauce

### Nutrition Facts

Serving Size 2 Tbsp. (34g)  
Servings Per Container 128

Amount Per Serving

Calories 70      Calories from Fat 0

% Daily Value\*

Total Fat 0g      0%

Saturated Fat 0g      0%

Trans Fat 0g

Cholesterol 0mg      0%

Sodium 250mg      10%

Total Carbohydrate 17g      6%

Dietary Fiber 0g      0%

Sugars 15g

Protein 0g

Vitamin A 2%      • Vitamin C 2%

Calcium 0%      • Iron 2%

\*Percent Daily Values are based on a 2,000 calorie diet. Your daily values may be higher or lower depending on your calorie needs:

		Calories:	2,000	2,500
Total Fat	Less than		65g	80g
Saturated Fat	Less than		20g	25g
Cholesterol	Less than		300mg	300mg
Sodium	Less than		2,400mg	2,400mg
Total Carbohydrate			300g	375g
Dietary Fiber			25g	30g

Calories per gram:

Fat 9 • Carbohydrate 4 • Protein 4

## STARRY

12 fl oz



Nutrition Facts	
Serving Size	12 fl oz (360 mL)
Amount Per Serving	
<b>Calories</b>	<b>150</b>
	% Daily Value*
Total Fat 0g	0%
Sodium 35mg	1%
Total Carbohydrate 39g	14%
Total Sugars 39g	
Includes 39g Added Sugars	78%
Protein 0g	
Not a significant source of other nutrients.	
*%DV = % Daily Value	

CARBONATED WATER, HIGH FRUCTOSE CORN SYRUP, CITRIC ACID, NATURAL FLAVOR, POTASSIUM BENZOATE (PRESERVES FRESHNESS), POTASSIUM CITRATE, CALCIUM DISODIUM EDTA (TO PROTECT FLAVOR)

Contains 0% Juice

FTN-F0000014342-L01

Last updated on February 04, 2023.

Caffeine: 0mg

Phosphorus: 0mg

### Notes

- Product formulation, packaging and promotions may change. For current information, refer to packaging on store shelves. Information may also differ from package labels because of the limited space on some packages.
- Visit [contact.pepsico.com](https://contact.pepsico.com) for more information.

**AQUAFINA****16.9 fl oz****Nutrition Facts**

1 serving per container  
**Serving Size** 16.9 fl oz (500 mL)

Amount Per Serving  
**Calories** **0**

% Daily Value\*

**Total Fat** 0g 0%

**Sodium** 0mg 0%

**Total Carbohydrate** 0g 0%

Total Sugars 0g

Includes 0g Added Sugars 0%

**Protein** 0g

Not a significant source of other nutrients.

\*%DV = % Daily Value

PURIFIED WATER

00012000181566

Last updated on February 04, 2023.

Caffeine: 0mg

Phosphorus: 0mg

**Notes**

- Product formulation, packaging and promotions may change. For current information, refer to packaging on store shelves. Information may also differ from package labels because of the limited space on some packages.
- Visit [contact.pepsico.com](https://contact.pepsico.com) for more information.

## DIET PEPSI

12 fl oz



Nutrition Facts	
Serving Size	12 fl oz (360 mL)
Amount Per Serving	
Calories	<b>0</b>
% Daily Value*	
Total Fat 0g	0%
Sodium 55mg	2%
Total Carbohydrate 0g	0%
Total Sugars 0g	
Includes 0g Added Sugars	0%
Protein 0g	
Not a significant source of other nutrients.	
*%DV = % Daily Value	

CARBONATED WATER, CARAMEL COLOR, PHOSPHORIC ACID, SODIUM CITRATE, SUCRALOSE, POTASSIUM BENZOATE (PRESERVES FRESHNESS), ACESULFAME POTASSIUM, CAFFEINE, NATURAL FLAVOR, CITRIC ACID, CALCIUM DISODIUM EDTA (TO PROTECT FLAVOR)

FTN-F0000003610-L04

Last updated on February 04, 2023.

Caffeine: 34mg

Phosphorus: 30mg

### Notes

- Product formulation, packaging and promotions may change. For current information, refer to packaging on store shelves. Information may also differ from package labels because of the limited space on some packages.
- Visit [contact.pepsico.com](https://contact.pepsico.com) for more information.

## MTN DEW

12 fl oz



Nutrition Facts	
Serving Size	12 fl oz (360 mL)
Amount Per Serving	
Calories	170
% Daily Value*	
Total Fat 0g	0%
Sodium 50mg	2%
Total Carbohydrate 44g	16%
Total Sugars 44g	
Includes 44g Added Sugars	88%
Protein 0g	
Not a significant source of other nutrients.	
*%DV = % Daily Value	

CARBONATED WATER, SUGAR, CONCENTRATED ORANGE JUICE, CITRIC ACID, NATURAL FLAVOR, SODIUM BENZOATE (PRESERVES FRESHNESS), CAFFEINE, SODIUM CITRATE, GUM ARABIC, ERYTHORBIC ACID (PRESERVES FRESHNESS), CALCIUM DISODIUM EDTA (TO PROTECT FLAVOR), YELLOW 5

FTN-44316\*01\*14-02-L03

Last updated on February 04, 2023.

Caffeine: 52mg

Phosphorus: 0mg

### Notes

- Product formulation, packaging and promotions may change. For current information, refer to packaging on store shelves. Information may also differ from package labels because of the limited space on some packages.
- Visit [contact.pepsico.com](https://contact.pepsico.com) for more information.



Nutrition Facts	
Serving Size	12 fl oz (360 mL)
Amount Per Serving	
<b>Calories</b>	<b>150</b>
	% Daily Value*
Total Fat 0g	0%
Sodium 30mg	1%
Total Carbohydrate 41g	15%
Total Sugars 41g	
Includes 41g Added Sugars	83%
Protein 0g	
Not a significant source of other nutrients.	
*%DV = % Daily Value	

CARBONATED WATER, HIGH FRUCTOSE CORN SYRUP, CARAMEL COLOR, SUGAR, PHOSPHORIC ACID, CAFFEINE, CITRIC ACID, NATURAL FLAVOR

FTN-35005\*26\*01-01-L11

Last updated on February 04, 2023.

Caffeine: 38mg  
Phosphorus: 50mg

## Notes

- Product formulation, packaging and promotions may change. For current information, refer to packaging on store shelves. Information may also differ from package labels because of the limited space on some packages.
- Visit [contact.pepsico.com](https://contact.pepsico.com) for more information.

