

Anchor® Breaded Wisconsin Cheese Curds 2X5 LB

Wisconsin cheese curds lightly breaded that delivers house-made appeal and authentic goodness in every bite.

PRODUCT DETAILS

GENERAL:
Packaging: 2/5 lb.

Best if used:
before 365 days from date of
manufacture, when stored at 0°F/-18°C
or below

Servings size: 9 pieces (88g)

Servings per container: 26

CASE:
Net weight case 10 lbs.
Gross weight case 10.75 lbs.

PRODUCT CODES:
SKU 1000005885
UPC 072714004605

PREPARATION

GENERAL CAUTIONS:
For best results, cook from frozen state
using recommended time and
temperature. Always cook to light golden
color. Do not overcook. When cooking
smaller amounts, reduce cooking time.
Product must be fully cooked for food
safety and quality.



DEEP FRY
Temp (°F): 350
Cooking Time
(min): 2 to 2-1/2

Instructions:
Fill basket one-third full (1.5 lbs) with
frozen product. Deep fry.

ADULT NUTRITION FACTS

26 servings per container

Serving Size **9 pieces**
(88g)
Amount Per Serving

| | |
|-------------------------|------------|
| Calories | 310 |
| Total Fat 18g | 23% |
| Saturated Fat 11g | 55% |
| Mono Unsaturated Fat 0g | |
| Poly Saturated Fat 0g | |
| Trans Fat 0g | |
| Cholesterol 65g | 22% |
| Sodium 640mg | 28% |
| Total Carbohydrate 16g | 6% |
| Dietary fiber 0g | 0% |
| Sugars 0g | 0.579% |
| Added Sugar 0g | 0% |
| Protein 15g | 30% |
| Vitamin D 0mcg | 0% |
| Calcium 420mg | 30% |
| Iron 0.6mg | 4% |
| Potassium 80mg | 0% |

*The % Daily Value (DV) tells you how much a nutrient
in a serving of food contributes to a daily diet. 2,000
calories a day is used for general nutrition advice.

INGREDIENTS

Cheddar Cheese (Pasteurized Milk, Cheese Cultures, Salt, Enzymes), Bleached Wheat Flour, Water. Contains 2% or less of Annatto Extract (color), Bleached Enriched Wheat Flour (Wheat Flour, Niacin, Ferrous Sulfate, Thiamine Mononitrate, Riboflavin, Folic Acid), Caramel Color, Cellulose Gum, Dextrose, Dried Yeast, Leavening (Sodium Acid Pyrophosphate, Sodium Bicarbonate), Modified Corn Starch, Paprika Extract (color), Salt, Sugar, Turmeric Oleoresin (color), Whey, Yellow Corn Flour

ALLERGENS

This product contains ingredients which
may cause an allergic reaction to the
following:



Tyson® Uncooked Savory Chicken Tenderloins

PRODUCT CODE: 10761560082 GTIN CODE: 00023700688897

Storage Method Cook Method

Frozen Deep Fry

- Made with premium, whole-muscle chicken.
- Vacuum marinated for uniform flavor and moisture throughout.
- Coated with seasoned wheat flour.
- Consistently portioned for easy preparation and lower labor costs.



Nutrition Facts

35 Servings Per Container

Serving Size 128g

Amount Per Serving

Calories 220

Daily Value % *

| | |
|-------------------------------|------------|
| Total Fat 8g | 10% |
| Saturated Fat 1.6g | 8% |
| Trans Fat 0g | |
| Polyunsaturated Fat 4g | |
| Monounsaturated Fat 2g | |
| Cholesterol 40mg | 13% |
| Sodium 840mg | 37% |
| Total Carbohydrate 17g | 6% |
| Dietary Fiber 0g | 0% |
| Total Sugars 0g | |
| Includes 0g Added Sugars | 0% |
| Protein 21g | 42% |
| Vitamin D 0mcg | 0% |
| Calcium 10mg | 0% |
| Iron 0.4mg | 2% |
| Potassium 320mg | 6% |

*The % Daily Value tells you how much a nutrient in a serving of food contributes to a daily diet. 2,000 calories a day is used for general nutrition advice.

To inquire if a signed copy of the product formulation statement or Child Nutrition statement is available for this item, please contact the Tyson Foodservice Customer Relations Team at 1-800-248-9766. Or email CustomerRelations@tyson.com.

Ingredients

Chicken tenderloins CONTAINING: Up to 12% of a solution of water, salt and sodium phosphates. BREADED WITH: Bleached wheat flour, salt, dextrose, leavening (sodium aluminum phosphate, sodium bicarbonate), spices, soybean oil, dried yeast, autolyzed yeast extract, disodium inosinate and disodium guanylate, and spice extractive. BATTERED WITH: Water, bleached wheat flour, modified food starch, salt, spices, garlic powder, onion powder, autolyzed yeast extract, soybean oil, disodium guanylate, disodium inosinate. PREDUSTED WITH: Wheat flour, wheat gluten, and salt. Breading set in vegetable oil.

ALLERGENS

Wheat



McCain Redstone Canyon Seasoned Skin On Spiral Fries, 4
pound -- 6 per case



McCain® REDSTONE CANYON® SPIRAL CUT FRENCH FRIES
USDA School Lunch Meal Planning Nutrition Facts
MCL03622

| NUTRITION FACTS | | | |
|---|----------------------|----------------|-----|
| Serving Size 2.12 oz. (60g) FROZEN * | | | |
| Amount per Serving | | | |
| Calories 110 | Calories from Fat 45 | | |
| | | % Daily Value* | |
| Total Fat 5g | | | 8% |
| Saturated Fat 0.5g | | | 3% |
| Trans Fat 0g | | | |
| Polyunsaturated Fat 1.5g | | | |
| Monounsaturated Fat 2.5g | | | |
| Cholesterol 0mg | | | 0% |
| Sodium 300mg | | | 12% |
| Potassium 150mg | | | 4% |
| Total Carbohydrate 15g | | | 5% |
| Dietary Fiber 1g | | | 5% |
| Sugars 0g | | | |
| Protein 1g | | | |
| Vitamin A | 0% | Vitamin C | 6% |
| Calcium | 0% | Iron | 2% |
| INGREDIENTS: Potatoes, Vegetable Oil (Contains One Or More Of The Following Oils: Canola, Soybean, Cottonseed, Sunflower, Corn), Bleached Enriched Wheat Flour (Flour, Niacin, Reduced Iron, Thiamine Mononitrate, Riboflavin, Folic Acid). Contains 2% or less of Annatto (color), Dextrin, Dextrose, Extractives of Capsicum, Extractives of Paprika (color), Garlic Powder, Leavening (Sodium Acid Pyrophosphate, Sodium Bicarbonate), Onion Powder, Paprika (color), Salt, Sodium Acid Pyrophosphate Added To Maintain Natural Color, Spices, Tapioca Starch, Tapioca Starch - Modified, Xanthan Gum. | | | |
| WHEAT | | CONTAINS: | |

* Per FBG, one serving portion (1/2 cup cooked vegetable) equals 2.12 oz of McCain battered fries.
I certify that this information is true and correct.

| USDA Food Buying Guide (FBG) for Child Nutrition Programs (Jan. 2013 Update) | | | |
|--|---------------------------------|---|-----------------------------|
| Product: Potatoes, French Fries, frozen, Curly (1/3-inch width) (pg. 2-48) | | | |
| USDA Purchase Unit | USDA Servings per Purchase Unit | USDA Serving Size per Meal Contribution | USDA Purchase Units for 100 |
| 1 Pound | 16.2 | 1/4 cup cooked vegetable | 6.2 |

| McCain Equivalent per Bag | | | |
|---|---------------------------------|---|-------------------------------|
| FBG serving sizes adjusted to accommodate batter; batter not part of vegetable serving. | | | |
| McCain Purchase Unit | USDA Servings per Purchase Unit | USDA Serving Size per Meal Contribution | McCain Purchase Units for 100 |
| 4 Pounds | 29.95 | 1/2 cup cooked vegetable | 3.34 |

| McCain Equivalent per Case | | | |
|---|---------------------------------|---|-------------------------------|
| FBG serving sizes adjusted to accommodate batter; batter not part of vegetable serving. | | | |
| McCain Purchase Unit | USDA Servings per Purchase Unit | USDA Serving Size per Meal Contribution | McCain Purchase Units for 100 |
| 24 Pounds (6 Bags per Case) | 179.7 | 1/2 cup cooked vegetable | 0.56 |

| Description of Creditable Ingredients per Food Buying Guide (FBG) | Ounces per Raw Portion of Creditable | Multiply | FBG Yield /Servings | Creditable Amount* |
|---|--------------------------------------|----------|---------------------|--------------------|
| Potato, FF, frozen, curly | 1.976 oz by weight | X | 16.2/ 16 | 2.000 |
| A. Total Creditable Amount | | | | 2.000 |

* Creditable Amount - Multiply ounces per raw portion of creditable ingredient by the FBG Yield Information.

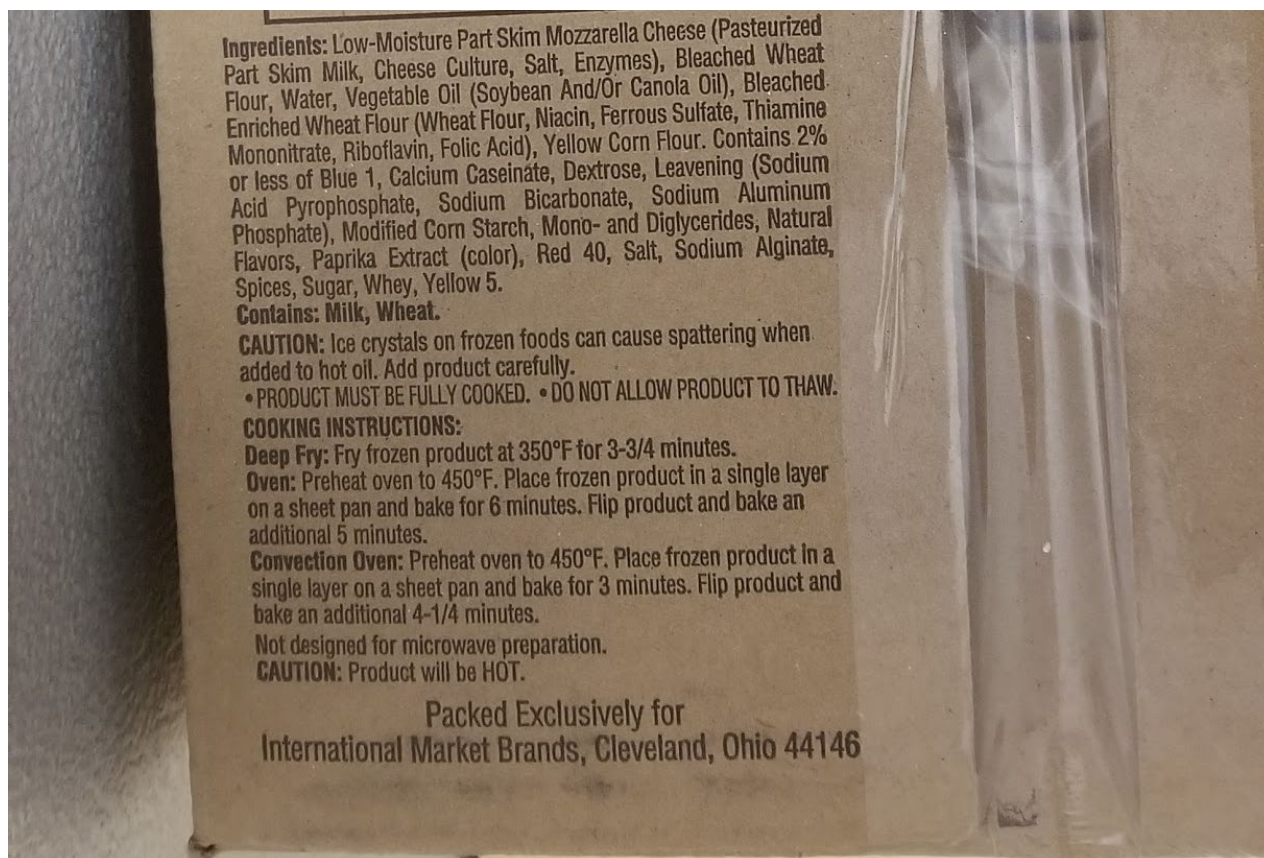
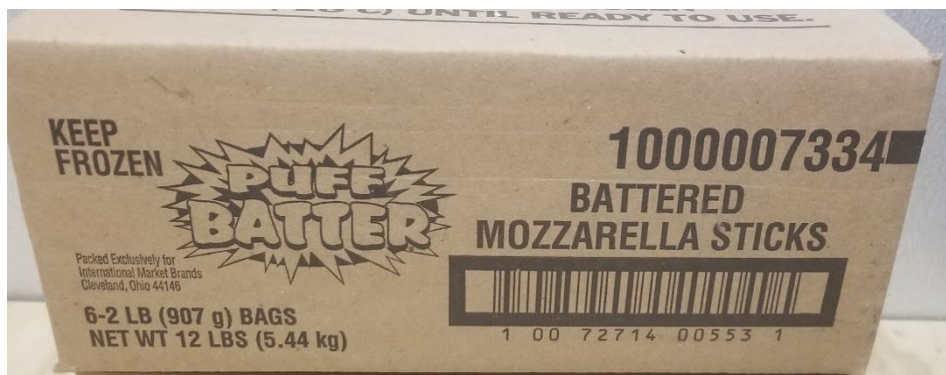
Using the quarter cup to cup conversion chart below to calculate the quarter cup creditable amount.
Quarter Cup to Cup Conversion:

| | | |
|----------------------------|-----------------------------|----------------------------|
| 0.5 Quarter Cups = 1/8 Cup | 1.5 Quarter Cups = 3/8 Cup | 2.5 Quarter Cups = 5/8 Cup |
| 1.0 Quarter Cups = 1/4 Cup | 2.0 Quarter Cups = 1/2 Cups | 3.0 Quarter Cups = 3/4 Cup |

10/31/2016
Date

Nicole L. Bartz

Nicole L. Bartz
Research and Development



Original Taco Logs®



Manufactured by
**Finger Food
Products, Inc.**

Niagara Falls, NY 14304
(716) 297-4888
FAX (716) 297-4944
www.pizzalogs.com

BEEF TACO FILLING WITH CHEESE AND SALSA IN DOUGH

Sodium Propionate and Potassium Sorbate Added to Retard Spoilage of Dough

INGREDIENTS:

Dough: Enriched wheat flour (contains: wheat flour, niacin, iron, thiamine mononitrate, riboflavin, folic acid), water, liquid whole egg and/or liquid egg white, corn starch and/or modified corn starch, salt, vinegar, sodium propionate, sodium stearoyl lactylate, potassium sorbate.

Beef Taco Filling: Ground Beef, Water, Black Beans (Prepared Black Beans, Water, Salt, Calcium Chloride (Firming Agent), Roasted Green Chile, Sun Rise Chili Powder (Chili Pepper, Spices, Salt, Garlic, Silicon Dioxide, Ethoxyquin), Dehydrated Onion, Beef Base (Roasted Beef And Beef Stock, Salt, Sugar, Natural Flavors, Tomato Paste, 2% Or Less Water, Potato Starch, Yeast Extract, Sunflower Oil, Corn Oil, Beef Fat, Lactic Acid), Modified Corn Starch, Apple Cider Vinegar (Distilled Vinegar From Grain, Natural Flavor With Caramel Color, Diluted With Water To A Uniform Pickling and Table Strength Of 5% (50 Grains) Acidity), Salt.

Cheese: Cheddar cheese (pasteurized milk, cheese culture, salt, enzymes, annatto [vegetable color]), Monterey Jack cheese (pasteurized milk, cheese culture, salt, enzymes). Potato starch, cellulose added to prevent caking.

Salsa: Tomatoes (Tomatoes, Tomato Juice), Crushed Tomatoes (Water, Concentrated Crushed Tomatoes), Jalapenos, Water, Onion, Cilantro, Contains Less Than 2% of Salt, Sugar, Distilled Vinegar, Spice, Garlic, Natural Flavor.

ALLERGENS: EGG, MILK, WHEAT



**NET WEIGHT
10.15 LB
CONTAINS
APPROXIMATELY
72 TACO LOGS**

KEEP FROZEN

PRODUCT OF USA