

B150-100 Chopped Butterfinger® Candy



Issue Date:	8/11/2021	Revision:	O
-------------	-----------	-----------	---

PRODUCT DESCRIPTION	
Varying-sized pieces of chopped Butterfinger® candy	

PHYSICAL ATTRIBUTES							
Appearance:	Irregular pieces varying in size and shape						
Color:	Reddish orange with milk chocolate						
Flavor:	Sweet, milk chocolate coating with peanut butter notes						
Pack Size:	2 x 5 Lbs.						
Case Dimensions:							
L[depth]xWxH in.	7	14.5	5.9	Case Cube(ft ³):	0.3466	Pallet Conf. (TI / HI)	15 10

INGREDIENTS	
CORN SYRUP, SUGAR, PEANUTS, VEGETABLE OIL (PALM KERNEL AND PALM OIL), PEANUT FLOUR, NONFAT MILK, LESS THAN 2% OF COCOA, MILK, SALT, SOY LECITHIN, NATURAL FLAVOR, ANNATTO COLOR.	

ALLERGENS:	CONTAINS: PEANUT, MILK, AND SOY. MAY ALSO CONTAIN TRACES OF: TREE NUTS, EGG AND WHEAT.
-------------------	--

Cornstarch is used as a processing aid.

NUTRITIONAL INFORMATION	
NUTRIENT	Per 100g
CALORIES	470
TOTAL FAT (g)	19.0
SATURATED FAT (g)	8.7
TRANS FAT (g)	0.05
CHOLESTEROL (mg)	2.06
SODIUM (mg)	270
TOTAL CARBOHYDRATE (g)	67.5
DIETARY FIBER (g)	2.62
TOTAL SUGARS (g)	39.2
ADDED SUGARS (g)	32.6
PROTEIN (g)	8.56
VITAMIN D (mcg)	0
CALCIUM (mg)	114.9
IRON (mg)	1.77
POTASSIUM (mg)	272



Nutrition Facts	
About 206 servings per container	
Serving size	2 Tbsp (22g)
Amount per serving	
Calories	100
% Daily Value*	
Total Fat 4g	5%
Saturated Fat 2g	10%
Trans Fat 0g	
Cholesterol 0mg	0%
Sodium 60mg	3%
Total Carbohydrate 15g	5%
Dietary Fiber 1g	4%
Total Sugars 9g	
Includes 7g Added Sugars	14%
Protein 1g	
Vitamin D 0mcg	0%
Calcium 25mg	2%
Iron 0mg	0%
Potassium 60mg	2%

*The % Daily Value tells you how much a nutrient in a serving of food contributes to a daily diet. 2,000 calories a day is used for general nutrition advice.

Brand Name:	TR Toppers	Net Weight: (Lbs.)	10.00
Country of Origin	USA	Net Weight: (Kg.)	4.54
Case GTIN	0 06 51844 10004 5	Gross Weight: (Lbs.)	11.00
Kosher	Star-D	Gross Weight: (Kg.)	4.99
Metal Detection	1.5mm Ferrous	1.8mm Non-Ferrous	2.0mm SS316
		Density (lbs/gal)	6.08

MICROBIOLOGICAL ATTRIBUTES*	
Attributes	Limits
Total Aerobic Plate Count (cfu/g)	<10,000
Yeast and Mold (cfu/g)	<100
Coliforms (cfu/g)	<10
E. coli (/g)	<10
Salmonella (/375g)	Negative

*The above attributes are provided by the product manufacturer. Parameters are guaranteed attributes.

GENETIC ENGINEERING STATEMENT	
	Completely Produced with Genetic Engineering.
X	Partially Produced with Genetic Engineering.
	May be produced with Genetic Engineering.
	NOT Produced with Genetic Engineering.

Ready-To-Eat (RTE) Status:	
X	RTE
	Not-RTE

STORAGE CONDITIONS	
Recommended Condition:	Best kept refrigerated (≤40°F).
Alternate Condition:	May be stored at ambient temperature (≤65°F, 50% RH).
Alternate Condition:	Seal and refrigerate after opening. DO NOT store at ambient after opening.

SHIPPING CONDITIONS	
Recommended Condition:	Best shipped refrigerated (≤40°F).
Alternate Condition:	May be shipped in freezer or refer truck at 0°F for less than 7 days.

SHELF LIFE	
Recommended Shelf Life:	390 days at recommended storage conditions.
Alternate Shelf Life:	300 days at ambient temperature (≤65°F, 50% RH).

ALLERGEN / SENSATIZER TABLE			
COMPONENT	PRESENT IN PRODUCT	PRESENT IN PRODUCTS MANUFACTURED ON THE SAME LINE	PRESENT IN THE SAME MANUFACTURING PLANT
PEANUTS AND DERIVATIVES	YES	YES	YES
TREE NUTS AND DERIVATIVES	MAY CONTAIN	YES	YES
EGG AND DERIVATIVES	MAY CONTAIN	YES	YES
MILK AND DERIVATIVES	YES	YES	YES
SOY AND DERIVATIVES	YES	YES	YES
WHEAT	MAY CONTAIN	YES	YES
FISH	NO	NO	NO
CRUSTACEAN SHELLFISH	NO	NO	NO
SULFITES > 10 ppm	NO	NO	YES
MUSTARD	NO	NO	NO
SESAME	NO	NO	NO
GLUTEN	MAY CONTAIN (WHEAT)		
ARTIFICIAL FLAVOR SOURCE	NO		
FD&C ARTIFICIAL COLORS	NO		

GRANULATION										
Sieve Size	1/2"	1/4"	#8	#12	Pan					
Range (%)	<40	25-50	13-40	<10	<20					

CODE FORMAT	EXAMPLE: 25811 15:32 B150-100 BB MM-YYYY
Case Code - Left Side: JJYL, Time, B150-100, PCO BB MM-YYYY	JJJ = Production Julian Date 258 = September 15; Y = Last Digit of Year 1 = 2011; L = Line (Numeric) 1 = Line 1; Time: HH:MM 15:32 = 3:32 p.m. Product Code = (e.g. B150-100)
Case Code - Right Side: JJYL, Time, B150-100, PCO, BB MM-YYYY	
Pallet Markings: JJY, Pallet #, B150-100	

Recommended storage and shipping condition: Best Kept Refrigerated (≤40°F)
 May be stored at ambient temperature. (≤65°F, 50% RH)

Nutrition Facts	
About 206 servings per container	
Serving size 2 Tbsp (22g)	
Amount per serving	
Calories 100	
% Daily Value*	
Total Fat 4g	5%
Saturated Fat 2g	10%
Trans Fat 0g	
Cholesterol 0mg	0%
Sodium 55mg	2%
Total Carbohydrate 15g	5%
Dietary Fiber 1g	4%
Total Sugars 9g	
Includes 7g Added Sugars	14%
Protein 2g	
Vitamin D 0mcg	0%
Calcium 28mg	2%
Iron 0mg	0%
Potassium 69mg	2%

*The % Daily Value (DV) tells you how much a nutrient in a serving of food contributes to a daily diet. 2,000 calories a day is used for general nutrition advice.

TR TOPPERS^{INC.}

Premium Dessert Top-Ins™



ZB901-100



NET WT. 10 lbs.
(4.54 Kilograms)

CAUTION!
 WHEN OPENING BOX, CUT
 THROUGH TAPE SURFACE ONLY.
 DEEP PENETRATION OF THE
 BLADE WILL DAMAGE CONTENTS.

Chopped Butterfinger® Candy
Ingredients: Corn Syrup, Sugar, Peanuts, Vegetable Oil (Palm Kernel And Palm Oil), Peanut Flour, Nonfat Milk, And Less Than 2% Of Cocoa, Milk, Salt, Soy Lecithin, Natural Flavor, Annatto Color. Corn Starch Is Used As A Processing Aid.
CONTAINS: MILK, PEANUT AND SOY. MAY ALSO CONTAIN TRACES OF: TREE NUTS, EGG AND WHEAT.
 Butterfinger® is a trademark of Ferrero Group.
 Processed and Distributed by
TR TOPPERS, INC.
 Pueblo, Colorado
 800-748-4635
www.trtoppers.com



Nutrition Facts

Serving Size 1 Cup (6g)
Servings Per Container 100

Amount Per Serving

Calories 25 Calories from Fat 0

% Daily Value*

Total Fat 0g **0%**

Saturated Fat 0g **0%**

Trans Fat 0g

Cholesterol 0mg **0%**

Sodium 10mg **0%**

Total Carbohydrate 5g **2%**

Dietary Fiber 0g **0%**

Sugars 0g

Protein less than 1g

Vitamin A 0% • Vitamin C 0%

Calcium 0% • Iron 2%

*Percent Daily Values are based on a 2,000 calorie diet. Your daily values may be higher or lower depending on your calorie needs.

Calories:	2,000	2,500
Total Fat	Less than 65g	80g
Sat Fat	Less than 20g	25g
Cholesterol	Less than 300mg	300mg
Sodium	Less than 2,400mg	2,400mg
Total Carbohydrate	300g	375g
Dietary Fiber	25g	30g

Total Fat	Less than	65g	80g
Sat Fat	Less than	20g	25g
Cholesterol	Less than	300mg	300mg
Sodium	Less than	2,400mg	2,400mg
Total Carbohydrate		300g	375g
Dietary Fiber		25g	30g

Calories per gram:

Fat 9 • Carbohydrate 4 • Protein 4

INGREDIENTS: ENRICHED WHEAT FLOUR (CONTAINS NIACIN, REDUCED IRON, THIAMINE MONONITRATE, RIBOFLAVIN, FOLIC ACID), TAPIOCA FLOUR, SUGAR, VEGETABLE OIL SHORTENING (SOYBEAN OIL OR CANOLA OIL, MODIFIED PALM OIL, SOY LECITHIN), LEAVENING (SODIUM BICARBONATE, AMMONIUM BICARBONATE), SALT, NATURAL FLAVOR, ANNATTO (VEGETABLE COLOR).

CONTAINS: WHEAT, SOY

Note: Paper jackets adhere to cups via a drop of corn syrup.

Reg. PA Dept. of Agriculture

JOY CONE CO. 

HERMITAGE, PENNSYLVANIA 16148

SINCE 1918

THESE DELICIOUS CUPS ARE BAKED BY PEOPLE WHO HAVE PRACTICED THE ART OF CONE BAKING FOR OVER NINETY-FIVE YEARS.

Visit our web site at <http://www.joycone.com>

Handle with Care

NET WT. 17 OZ. (1 LB. 1 OZ.) 482 g



PRODUCT SPECIFICATION

Product Code	16011826
Product Name	BEBETO 3,5G O.BEARS 12 COLORS 5LBSX4
Category	Jelly
Legal Description	Mixed Fruit Gummy Candy

Ingredients

Ingredients: Corn Syrup, Sugar, Beef Gelatine, Citric Acid, Natural and Artificial Flavors, Palm Oil, Carnauba Wax, Beeswax, Colors (Red No.40, Yellow No.5, Yellow No.6, Blue No.1, Red No.3).

Composition

Ingredient	%
Corn Syrup	56,350
Sugar	31,082
Beef Gelatine	6,016
Water	4,500
Citric Acid	1,606
Palm Oil	0,189
Artificial Flavor (Pineapple)	0,028
Artificial Flavor (Mango)	0,021
Flavor (Blueraspberry)	0,021
Flavor (Grapefruit)	0,021
Artificial Flavor (Grape)	0,021
Artificial Flavor (Watermelon)	0,021
Artificial Flavor (Strawberry)	0,021
Carnauba Wax, Bees Wax	0,021
Artificial Flavor (Orange)	0,016
Natural Flavor (Apple)	0,016
Artificial Flavor (Lemon)	0,016
Natural Flavor (Lemon)	0,016
Flavor (Cherry)	0,013
Red No.40	0,001
Yellow No.5	0,001
Yellow No.6	0,001
Blue No.1	0,001
Red No.3	0,001

Allergen

May contain gluten.

Organoleptic characteristics

Taste and odour: special characteristics of its own.

Chemical Analysis

Arsenic (Ar)	Max. 1 mg/kg
Lead (Pb)	Max. 2 mg/kg
Copper (Cu)	Max. 10 mg/kg
SO ₂	<10 mg/kg

Microbiological Analysis

Yeast and Mould	100 kob/g
E.Coli	<10 kob/g

Nutrition Value / 100g

Energy	1511 kj / 356 kcal
Fat	0g
Of which : -saturates	0g
Carbohydrate	83g
Of which: -sugars	50g
Fibre	0g
Protein	5,9g
Salt	0,03g

Other

Milk Fat (%)	0g
Milk Protein(%)	0g
Starch+ glucose(%)	34,9-42,7
Sucrose + invert sugar + isoglucose(%)	28,2-34,4
Sugar Tax Code	7012

H330-100 Chopped Heath® English Toffee



Issue Date:	3/19/2021	Revision:	E
-------------	-----------	-----------	---

PRODUCT DESCRIPTION
Varying sized pieces of chopped toffee/almond flavored candy coated with a mild milk chocolate

PHYSICAL ATTRIBUTES							
Appearance:	Thin, rectangular shaped toffee bars enrobed in creamy milk chocolate						
Color:	Yellowish brown, typical Heath						
Flavor:	Typical Heath candy bar						
Pack Size:	2 x 5 Lbs.						
Case Dimensions:							
L[depth]xWxH in.	7	14.5	6	Case Cube(ft ³):	0.3524	Pallet Conf. (TI / HI)	15 10

INGREDIENTS	
MILK CHOCOLATE (SUGAR, COCOA BUTTER, CHOCOLATE, SKIM MILK, MILK FAT, LACTOSE, SALT, SOY LECITHIN, NATURAL FLAVOR), SUGAR, VEGETABLE OIL (PALM OIL, SUNFLOWER OIL), DAIRY BUTTER, ALMONDS, CONTAINS 2% OR LESS OF: SALT, SOY LECITHIN, CHOCOLATE.	
ALLERGENS:	CONTAINS: ALMOND, SOY AND MILK. MAY ALSO CONTAIN TRACES OF: TREE NUTS, PEANUTS, EGG AND WHEAT.

NUTRITIONAL INFORMATION	
NUTRIENT	Per 100g
CALORIES	542.29
TOTAL FAT (g)	32.17
SATURATED FAT (g)	17.39
TRANS FAT (g)	0.42
CHOLESTEROL (mg)	15.08
SODIUM (mg)	329.21
TOTAL CARBOHYDRATE (g)	61.92
DIETARY FIBER (g)	1.33
TOTAL SUGARS (g)	60.11
ADDED SUGARS (g)	58.04
PROTEIN (g)	3.05
VITAMIN D (mcg)	0.29
CALCIUM (mg)	59.67
IRON (mg)	1.38
POTASSIUM (mg)	136.35



Nutrition Facts	
About 216 servings per container	
Serving size 2 Tbsp (21g)	
Amount per serving	
Calories 110	
<small>% Daily Value*</small>	
Total Fat 7g	9%
Saturated Fat 3.5g	18%
Trans Fat 0g	
Cholesterol 5mg	2%
Sodium 75mg	3%
Total Carbohydrate 13g	5%
Dietary Fiber 0g	0%
Total Sugars 13g	
Includes 12g Added Sugars	24%
Protein 1g	
Vitamin D 0mcg	0%
Calcium 13mg	2%
Iron 0mg	0%
Potassium 29mg	0%
<small>*The % Daily Value tells you how much a nutrient in a serving of food contributes to a daily diet. 2,000 calories a day is used for general nutrition advice.</small>	

Brand Name:	TR Toppers	Net Weight: (Lbs.)	10.00
Country of Origin	USA	Net Weight: (Kg.)	4.54
Case GTIN	0 06 51844 10007 6	Gross Weight: (Lbs.)	11.00
Kosher	Star-D	Gross Weight: (Kg.)	4.99
Metal Detection	1.5mm Ferrous	1.8mm Non-Ferrous	2.0mm SS316
		Density (lbs/gal)	5.86

MICROBIOLOGICAL ATTRIBUTES*	
Attributes	Limits
Total Aerobic Plate Count (cfu/g)	<25,000
Yeast and Mold (cfu/g)	<100
Coliforms (cfu/g)	<10
E. coli (cfu/g)	<10
Salmonella (/25g)	Negative

*The above attributes are provided by the product manufacturer. Parameters are guaranteed attributes.

GMO STATEMENT	
X	Produced with Genetic Engineering.
	Partially Produced with Genetic Engineering.
	May be produced with Genetic Engineering.
	NOT Produced with Genetic Engineering.

STORAGE CONDITIONS	
Recommended Condition:	Best kept refrigerated (≤40°F). Seal container after opening. Refrigerate promptly after opening.
Alternate Condition:	May be frozen (<10°F).

SHIPPING CONDITIONS	
Recommended Condition:	Best shipped refrigerated (≤40°F).
Alternate Condition:	May be shipped in freezer or refer truck at 0°F for less than 7 days.

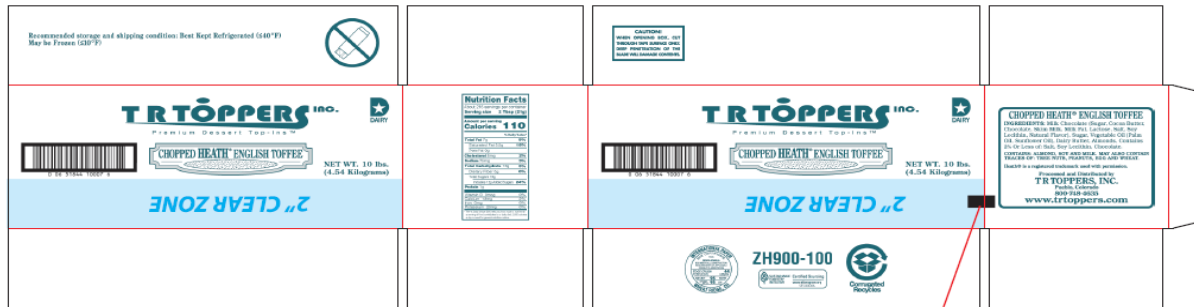
SHELF LIFE	
Recommended Shelf Life:	365 days at recommended storage conditions.
Alternate Shelf Life:	Calculate 2/3 of remaining shelf life when opened and stored at refrigeration temperature.

ALLERGEN / SENSATIZER TABLE			
COMPONENT	PRESENT IN PRODUCT	PRESENT IN PRODUCTS MANUFACTURED ON THE SAME LINE	PRESENT IN THE SAME MANUFACTURING PLANT
PEANUTS AND DERIVATIVES	MAY CONTAIN	YES	YES
TREE NUTS AND DERIVATIVES	YES	YES	YES
EGG AND DERIVATIVES	MAY CONTAIN	YES	YES
MILK AND DERIVATIVES	YES	YES	YES
SOY AND DERIVATIVES	YES	YES	YES
WHEAT	MAY CONTAIN	YES	YES
FISH	NO	NO	NO
CRUSTACEAN SHELLFISH	NO	NO	NO
SULFITES > 10 ppm	NO	NO	YES
MUSTARD	NO	NO	NO
SESAME	NO	NO	NO
GLUTEN	MAY CONTAIN (WHEAT)		
ARTIFICIAL FLAVOR SOURCE	NONE		
FD&C ARTIFICIAL COLORS	NO		

GRANULATION										
Sieve Size	1/2"	1/4"	#12	Pan						
%	<6.0	35 - 80	10 - 40	25.0						

CODE FORMAT	
Case Code - Left Side: Julian Date, Time, H330-100, PCO, BEST BY MM YYYY	EXAMPLE: 25811 15:32 H330-100 JJJ = Production Julian Date 258 = September 15; Y = Last Digit of Year 1 = 2011; L = Line (Numeric) 1 = Line 1; Time: HH:MM 15:32 = 3:32 p.m. Product Code = (e.g. H330-100)
Case Code - Right Side: Julian Date, Time, H330-100, PCO, BEST BY MM YYYY	
Pallet Markings: JJY, Pallet #, H330-100	

LABEL / CASE GRAPHICS



ZH900-100



CAUTION!
WHEN OPENING BOX, CUT THROUGH TAPE SURFACE ONLY. DEEP PENETRATION OF THE BLADE WILL DAMAGE CONTENTS.

CHOPPED HEATH® ENGLISH TOFFEE
INGREDIENTS: Milk Chocolate (Sugar, Cocoa Butter, Chocolate, Skim Milk, Milk Fat, Lactose, Salt, Soy Lecithin, Natural Flavor), Sugar, Vegetable Oil (Palm Oil, Sunflower Oil), Dairy Butter, Almonds, Contains 2% Or Less of: Salt, Soy Lecithin, Chocolate.
CONTAINS: ALMOND, SOY AND MILK. MAY ALSO CONTAIN TRACES OF: TREE NUTS, PEANUTS, EGG AND WHEAT.
 Heath® is a registered trademark used with permission.
 Processed and Distributed by
TR TOPPERS, INC.
 Pueblo, Colorado
 800-748-4635
www.trtoppers.com



★
DAIRY
NET WT. 10 lbs.
(4.54 Kilograms)

Nutrition Facts	
About 216 servings per container	
Serving size 2 Tbsp (21g)	
Amount per serving	
Calories 110	
% Daily Value*	
Total Fat 7g	9%
Saturated Fat 3.5g	18%
Trans Fat 0g	
Cholesterol 5mg	2%
Sodium 75mg	3%
Total Carbohydrate 13g	5%
Dietary Fiber 0g	0%
Total Sugars 13g	
Includes 12g Added Sugars	24%
Protein 1g	
Vitamin D 0mcg	0%
Calcium 13mg	2%
Iron 0mg	0%
Potassium 29mg	0%

*The % Daily Value (DV) tells you how much a nutrient in a serving of food contributes to a daily diet. 2,000 calories a day is used for general nutrition advice.

TR TOPPERS INC.
 Premium Dessert Top-Ins™



Recommended storage and shipping condition: Best Kept Refrigerated (≤40°F)
 May be Frozen (≤10°F)



HERSHEY'S SYRUP
NO ARTIFICIAL COLORS
CHOCOLATE MILK: Stir 1 tablespoon or add to taste into 8 oz. of cold milk
FRUITS & DESSERTS: Pour over fruits, ice cream, cakes and desserts
HOT CHOCOLATE: Stir 1 tablespoon or add to taste into 8 oz. of cold milk and heat
FOR DELICIOUS RECIPES, VISIT US AT WWW.HERSHEYSKITCHENS.COM

Nutrition Facts		Amount/Serving		% DV	
about 35 servings per container	Total Fat 0g	0%	Total Carb. 12g	4%	
	Saturated Fat 0g	0%	Dietary Fiber <1g	0%	
	Trans Fat 0g		Total Sugars 10g		
Serving size 1 tbsp. (19g)	Cholesterol 0mg	0%	Incl. 10g Added Sugars	19%	
	Sodium 5mg	0%	Protein 0g		
Calories 45 per serving	Vitamin D 0%	Calcium 0%	Iron 4%	Potassium 0%	

INGREDIENTS: HIGH FRUCTOSE CORN SYRUP; CORN SYRUP; WATER; COCOA; SUGAR; CONTAINS 2% OR LESS OF POTASSIUM SORBATE, TO MAINTAIN FRESHNESS; XANTHAN GUM; SALT; MONO- AND DIGLYCERIDES; POLYSORBATE 60; VANILLIN; ARTIFICIAL FLAVOR. *ADDS A NEGLIGIBLE AMOUNT OF FAT. ©D

Dist. by The Hershey Company
Hershey, PA 17033-0815, U.S.A.
Questions or comments?
www.askhershey.com or 800-468-1714
Visit us at www.hersheys.com



56D13B1
BB 03 2024

HERSHEY'S SYRUP
Caramel Milk: Stir 1 tablespoon or add to taste into 8 oz. of cold milk.
FRUITS & DESSERTS: Pour over fruits, ice cream, cakes and desserts
MILKSHAKE: Squeeze 4 tablespoons into blender with 3-4 scoops vanilla ice cream and 1/4 cup of milk. Blend until thick and smooth.
FOR DELICIOUS RECIPES, VISIT US AT WWW.HERSHEYSKITCHENS.COM

Nutrition Facts		Amount/Serving		% DV	
about 31 servings per container	Total Fat 0g	0%	Total Carb. 13g	5%	
	Saturated Fat 0g	0%	Dietary Fiber 0g	0%	
	Trans Fat 0g		Total Sugars 10g		
Serving size 1 tbsp. (19g)	Cholesterol 0mg	0%	Incl. 10g Added Sugars	21%	
	Sodium 60mg	3%	Protein 0g		
Calories 50 per serving	Vitamin D 0%	Calcium 0%	Iron 0%	Potassium 0%	

INGREDIENTS: CORN SYRUP; HIGH FRUCTOSE CORN SYRUP; SWEETENED CONDENSED SKIM MILK* (SKIM MILK, SUGAR, WATER, CONTAINS 2% OR LESS OF DISODIUM PHOSPHATE, SODIUM CITRATE, ARTIFICIAL FLAVOR, SALT, CARAMEL COLOR); XANTHAN GUM; ARTIFICIAL COLOR (YELLOW 5 & YELLOW 6); *ADDS A NEGLIGIBLE AMOUNT OF FAT. ©D

Dist. by The Hershey Company
Hershey, PA 17033-0815, U.S.A.
Questions or comments?
www.askhershey.com or 800-468-1714
Visit us at www.hersheys.com



47M13B2
BB 05 2024

HERSHEY'S SYRUP
Strawberry Milk: Stir 1 tablespoon or add to taste into 8 oz. of cold milk.
FRUITS & DESSERTS: Pour over fruits, ice cream, cakes and desserts
MILKSHAKE: Squeeze 4 tablespoons into blender with 3-4 scoops vanilla ice cream and 1/4 cup of milk. Blend until thick and smooth.
FOR DELICIOUS RECIPES, VISIT US AT WWW.HERSHEYSKITCHENS.COM

Nutrition Facts		Amount/Serving		% DV	
about 32 servings per container	Total Fat 0g	0%	Total Carb. 12g	4%	
	Saturated Fat 0g	0%	Dietary Fiber 0g	0%	
	Trans Fat 0g		Total Sugars 11g		
Serving size 1 tbsp. (19g)	Cholesterol 0mg	0%	Incl. 11g Added Sugars	22%	
	Sodium 0mg	0%	Protein 0g		
Calories 50 per serving	Vitamin D 0%	Calcium 0%	Iron 0%	Potassium 0%	

INGREDIENTS: HIGH FRUCTOSE CORN SYRUP; WATER; CORN SYRUP; CONTAINS 2% OR LESS OF ARTIFICIAL FLAVOR; CITRIC ACID; SODIUM BENZOATE, TO MAINTAIN FRESHNESS; XANTHAN GUM; ARTIFICIAL COLOR (RED 40). ©D

Dist. by The Hershey Company
Hershey, PA 17033-0815, U.S.A.
Questions or comments?
www.askhershey.com or 800-468-1714
Visit us at www.hershey.com



40G13B1
BB 04 2023



MOOSE TRACKS®

Famous Moose Tracks® fudge and peanut butter cups swirled through vanilla ice cream.

[← BACK](#)

Various servings per container

Serving Size 2/3 Cup (103g)

Calories 290

**The % Daily Value tells you how much a nutrient in a serving of food contributes to a daily diet. 2,000 calories a day is used for general nutrition advice.*



Amount/Serving	%DV*
Total Fat 16g	21%
Saturated Fat 9g	45%
Trans Fat 0g	
Cholesterol 30mg	10%
Sodium 90mg	4%

Amount/Serving	%DV*
Total Carbohydrate 33g	12%
Dietary Fiber 1g	4%
Total Sugars 26g	
Includes 20g Added Sugars	40%
Protein 4g	

Amount/Serving	%DV*
Vitamin D 0mcg	0%
Calcium 150mg	10%
Iron 1mg	6%
Potassium 235mg	6%

INGREDIENTS: CREAM, NONFAT MILK, FUDGE SAUCE (SUGAR, VEGETABLE OIL, (PEANUT AND/OR COTTONSEED AND/OR PALM OIL), COCOA (PROCESSED WITH ALKALI), WHEY, SOY LECITHIN, SALT, NATURAL FLAVOR), MINI PEANUT BUTTER CUP (SUGAR, PEANUT BUTTER, (PEANUT, SALT), COCONUT OIL, MILK, COCOA (PROCESSED WITH ALKALI), SOY LECITHIN, NATURAL FLAVORS), SUGAR, HIGH FRUCTOSE CORN SYRUP, CORN SYRUP, WHEY, VANILLA EXTRACT, MONO- & DIGLYCERIDES, GUAR GUM, POLYSORBATE 80, CARRAGEENAN.

CONTAINS: MILK, PEANUT, SOY.

MADE WITH GLUTEN-FREE INGREDIENTS



PEANUT BUTTER CUP

Chocolate ice cream swirled with real peanut butter.

[← BACK](#)

Various servings per container

Serving Size 2/3 Cup (103g)

Calories 290

**The % Daily Value tells you how much a nutrient in a serving of food contributes to a daily diet. 2,000 calories a day is used for general nutrition advice.*



Amount/Serving	%DV*
Total Fat 15g	19%
Saturated Fat 7g	35%
Trans Fat 0g	
Cholesterol 35mg	12%
Sodium 100mg	4%

Amount/Serving	%DV*
Total Carbohydrate 26g	9%
Dietary Fiber 2g	7%
Total Sugars 19g	
Includes 13g Added Sugars	26%
Protein 6g	

Amount/Serving	%DV*
Vitamin D 0mcg	0%
Calcium 158mg	10%
Iron 1mg	6%
Potassium 333mg	8%

INGREDIENTS: CREAM, NONFAT MILK, PEANUT BUTTER WHIRL (PEANUTS, SUGAR, SALT), HIGH FRUCTOSE CORN SYRUP, SUGAR, WHEY, CORN SYRUP, COCOA (PROCESSED WITH ALKALI), MONO- & DIGLYCERIDES, GUAR GUM, POLYSORBATE 80, CARRAGEENAN.

CONTAINS: MILK, PEANUT.

MADE WITH GLUTEN-FREE INGREDIENTS



COOKIES & CREAM

Vanilla ice cream with delicious cream filled cookie chunks.

[← BACK](#)

Various servings per container

Serving Size 2/3 Cup (103g)

Calories 230

**The % Daily Value tells you how much a nutrient in a serving of food contributes to a daily diet. 2,000 calories a day is used for general nutrition advice.*



Amount/Serving	%DV*
Total Fat 11g	14%
Saturated Fat 7g	35%
Trans Fat 0g	
Cholesterol 35mg	12%
Sodium 100mg	4%

Amount/Serving	%DV*
Total Carbohydrate 31g	11%
Dietary Fiber 0g	0%
Total Sugars 22g	
Includes 17g Added Sugars	34%
Protein 3g	

Amount/Serving	%DV*
Vitamin D 0mcg	0%
Calcium 154mg	10%
Iron 0mg	0%
Potassium 130mg	2%

INGREDIENTS: CREAM, NONFAT MILK, SUGAR, HIGH FRUCTOSE CORN SYRUP, COOKIES (SUGAR, ENRICHED FLOUR [WHEAT FLOUR, NIACIN, REDUCED IRON, THIAMINE MONONITRATE, RIBOFLAVIN, FOLIC ACID], PALM AND PALM KERNEL OIL, COCOA [PROCESSED WITH ALKALI], CORN FLOUR, SALT, SODIUM BICARBONATE, DEXTROSE, SOY LECITHIN, NATURAL FLAVORS), CORN SYRUP, WHEY, NATURAL VANILLA FLAVOR, MONO- & DIGLYCERIDES, GUAR GUM, POLYSORBATE 80, CARRAGEENAN.
CONTAINS: MILK, SOY, WHEAT.



GREEN MINT CHIP

Cool green mint ice cream with tasty chocolate chips throughout.

[← BACK](#)

Various servings per container

Serving Size 2/3 Cup (103g)

Calories 230

**The % Daily Value tells you how much a nutrient in a serving of food contributes to a daily diet. 2,000 calories a day is used for general nutrition advice.*



Amount/Serving	%DV*
Total Fat 11g	14%
Saturated Fat 7g	35%
Trans Fat 0g	
Cholesterol 35mg	12%
Sodium 50mg	2%

Amount/Serving	%DV*
Total Carbohydrate 30g	11%
Dietary Fiber 1g	4%
Total Sugars 23g	
Includes 18g Added Sugars	36%
Protein 3g	

Amount/Serving	%DV*
Vitamin D 0mcg	0%
Calcium 155mg	10%
Iron 0mg	0%
Potassium 145mg	4%

INGREDIENTS: CREAM, NONFAT MILK, SUGAR, HIGH FRUCTOSE CORN SYRUP, CORN SYRUP, CHOCOLATE CHIPS (SUGAR, CHOCOLATE LIQUOR, COCOA BUTTER, DEXTROSE, SOY LECITHIN, SALT, ARTIFICIAL VANILLA FLAVOR), WHEY, NATURAL PEPPERMINT FLAVOR, MONO- & DIGLYCERIDES, GUAR GUM, POLYSORBATE 80, CARRAGEENAN, YELLOW 5, BLUE 1.
CONTAINS: MILK, SOY.

MADE WITH GLUTEN-FREE INGREDIENTS



REDUCED FAT/NO SUGAR ADDED BUTTER PECAN

Reduced fat ice cream with natural butter pecan flavoring & fresh roasted pecans, with no added sugar.

[← BACK](#)

Various servings per container
Serving Size 2/3 Cup (103g)

Calories 190

**The % Daily Value tells you how much a nutrient in a serving of food contributes to a daily diet. 2,000 calories a day is used for general nutrition advice.*



Amount/Serving	%DV*
Total Fat 12g	15%
Saturated Fat 4.5g	23%
Trans Fat 0g	
Cholesterol 25mg	8%
Sodium 95mg	4%

Amount/Serving	%DV*
Total Carbohydrate 8g	3%
Dietary Fiber 1g	4%
Total Sugars 6g	
Includes 0g Added Sugars	0%
Protein 5g	

Amount/Serving	%DV*
Vitamin D 0mcg	0%
Calcium 174mg	15%
Iron 0mg	0%
Potassium 85mg	2%
Vitamin A 8mcg	0%

INGREDIENTS: NONFAT MILK, CREAM, SORBITOL, POLYDEXTROSE, MALTODEXTRIN, ACESULFAME POTASSIUM, SUCRALOSE, ROASTED PECANS (PECANS, BUTTER, SALT), NATURAL FLAVOR, CARAMEL COLOR, POLYSORBATE 80, VITAMIN A PALMITATE.

CONTAINS: MILK, PECANS.

MADE WITH GLUTEN-FREE INGREDIENTS



CHOCOLATE CHIP COOKIE DOUGH

Vanilla ice cream with chocolate chips and chunks of delicious cookie dough throughout.

[← BACK](#)

Various servings per container
Serving Size 2/3 Cup (103g)

Calories 240

**The % Daily Value tells you how much a nutrient in a serving of food contributes to a daily diet. 2,000 calories a day is used for general nutrition advice.*



Amount/Serving	%DV*
Total Fat 13g	17%
Saturated Fat 7g	35%
Trans Fat 0g	
Cholesterol 35mg	12%
Sodium 70mg	3%

Amount/Serving	%DV*
Total Carbohydrate 31g	11%
Dietary Fiber 1g	4%
Total Sugars 23g	
Includes 18g Added Sugars	36%
Protein 3g	

Amount/Serving	%DV*
Vitamin D 0mcg	0%
Calcium 147mg	10%
Iron 0mg	0%
Potassium 157mg	4%

INGREDIENTS: CREAM, NONFAT MILK, SUGAR, HIGH FRUCTOSE CORN SYRUP, COOKIE DOUGH (WHEAT FLOUR, BROWN SUGAR, SUGAR, PALM OIL, SOYBEAN OIL, WATER, CHOCOLATE CHIP [SUGAR, CHOCOLATE LIQUOR, COCOA BUTTER, SOY LECITHIN, VANILLA EXTRACT], CORN STARCH, NATURAL FLAVOR, MOLASSES, VANILLA EXTRACT, BAKING SODA, SALT), CORN SYRUP, WHEY, CHOCOLATE CHIP (SUGAR, COCOA [PROCESSED WITH ALKALI], SOYBEAN OIL, FULLY HYDROGENATED COCONUT OIL, CHOCOLATE LIQUOR, SALT, SOY LECITHIN), NATURAL VANILLA FLAVOR, MONO- & DIGLYCERIDES, GUAR GUM, POLYSORBATE 80, CARRAGEENAN.

CONTAINS: MILK, SOY, WHEAT.



Lil' Blue Panda

Sweet blue and white sugar cookie flavored ice cream twisted together with a blue cookie dough swirl and cream filled chocolate cookies!

[← Back](#)

Various servings per container

Serving Size 2/3 Cup (103g)

Calories 270

*The % Daily Value tells you how much a nutrient in a serving of food contributes to a daily diet. 2,000 calories a day is used for general nutrition advice.



Amount/Serving	%DV*
Total Fat 12g	15%
Saturated Fat 8g	40%
Trans Fat 0g	
Cholesterol 30mg	10%
Sodium 160mg	7%

Amount/Serving	%DV*
Total Carbohydrate 39g	14%
Dietary Fiber 1g	4%
Total Sugars 28g	
Includes 23g Added Sugars	46%
Protein 3g	

Amount/Serving	%DV*
Vitamin D 0mcg	0%
Calcium 126mg	10%
Iron 1mg	6%
Potassium 126mg	2%

INGREDIENTS: CREAM, COOKIES (SUGAR, ENRICHED FLOUR [WHEAT FLOUR, NIACIN, REDUCED IRON, THIAMINE MONONITRATE, RIBOFLAVIN, FOLIC ACID], PALM AND PALM KERNEL OIL, COCOA [PROCESSED WITH ALKALI], CORN FLOUR, SALT, SODIUM BICARBONATE, DEXTROSE, SOY LECITHIN, NATURAL FLAVORS), NONFAT MILK, BLUE COOKIE DOUGH (SUGAR, CORN SYRUP, WHEAT FLOUR, BROWN SUGAR, BUTTER [CREAM, SALT], WATER, COCONUT OIL, PEANUT OIL, SOY LECITHIN, SALT, NATURAL FLAVOR, BLUE 1, TURMERIC [FOR COLOR]), SUGAR, HIGH FRUCTOSE CORN SYRUP, CORN SYRUP, WHEY, BROWN SUGAR COOKIE FLAVOR (SUGAR, WATER, CORN SYRUP, BROWN SUGAR, WHEAT FLOUR, BUTTER [CREAM, SALT], PROPYLENE GLYCOL, MODIFIED CORNSTARCH, MOLASSES, SALT, NATURAL AND ARTIFICIAL FLAVOR, SOY LECITHIN, XANTHAN GUM, CARAMEL COLOR), MONO- & DIGLYCERIDES, GUAR GUM, POLYSORBATE 80, CARRAGEENAN, BLUE 1.
CONTAINS: MILK, SOY, WHEAT.

SUPERMAN

A playful twist of strawberry, banana, and Blue Moon ice cream. Another great kid favorite!

[← BACK](#)



Various servings per container

Serving Size 2/3 Cup (103g)

Calories 200

*The % Daily Value tells you how much a nutrient in a serving of food contributes to a daily diet. 2,000 calories a day is used for general nutrition advice.



Amount/Serving	%DV*
Total Fat 10g	13%
Saturated Fat 6g	30%
Trans Fat 0g	
Cholesterol 35mg	12%
Sodium 55mg	2%

Amount/Serving	%DV*
Total Carbohydrate 27g	10%
Dietary Fiber 0g	0%
Total Sugars 21g	
Includes 15g Added Sugars	30%
Protein 3g	

Amount/Serving	%DV*
Vitamin D 0mcg	0%
Calcium 153mg	10%
Iron 0mg	0%
Potassium 129mg	2%

INGREDIENTS: CREAM, NONFAT MILK, SUGAR, HIGH FRUCTOSE CORN SYRUP, CORN SYRUP, WHEY, STRAWBERRY PUREE (STRAWBERRIES, SUGAR, MODIFIED CORN STARCH, NATURAL FLAVOR, CITRIC ACID), BANANA PUREE, ASCORBIC ACID, ARTIFICIAL FLAVOR, MONO- & DIGLYCERIDES, GUAR GUM, POLYSORBATE 80, CARRAGEENAN, RED 40, BLUE 1, YELLOW 5 & 6.
CONTAINS: MILK.

MADE WITH GLUTEN-FREE INGREDIENTS





ICE CREAM INGREDIENTS: CREAM, SKIM MILK, LIQUID SUGAR [SUGAR, WATER], MONO & DIGLYCERIDES, GUAR GUM, LOCUST BEAN GUM, CARRAGEENAN, VANILLA EXTRACT, ANNATTO [COLOR].
WAFER INGREDIENTS: WHEAT FLOUR, SUGAR, PALM OIL, CORN FLOUR, CONTAINS 2% OR LESS OF COCOA, DEXTROSE, CARAMEL COLOR, BAKING SODA, MODIFIED CORN STARCH, SALT, SOY LECITHIN.
CONTAINS: MILK, WHEAT, SOY



Nutrition Facts

Serving Size 1 Pop (56g)
 Servings Per Container 12

Amount Per Serving

Calories 40 Calories from Fat 0

% Daily Value*

Total Fat	0g	0%
Saturated Fat	0g	0%
Trans Fat	0g	
Cholesterol	0mg	0%
Sodium	5mg	1%
Total Carbohydrate	10g	3%
Dietary Fiber	0g	0%
Sugars	8g	
Protein	0g	

Vitamin A 0% • Vitamin C 0%

Calcium 0% • Iron 0%

*Percent Daily Values are based on a 2,000 calorie diet. Your daily values may be higher or lower depending on your calorie needs:

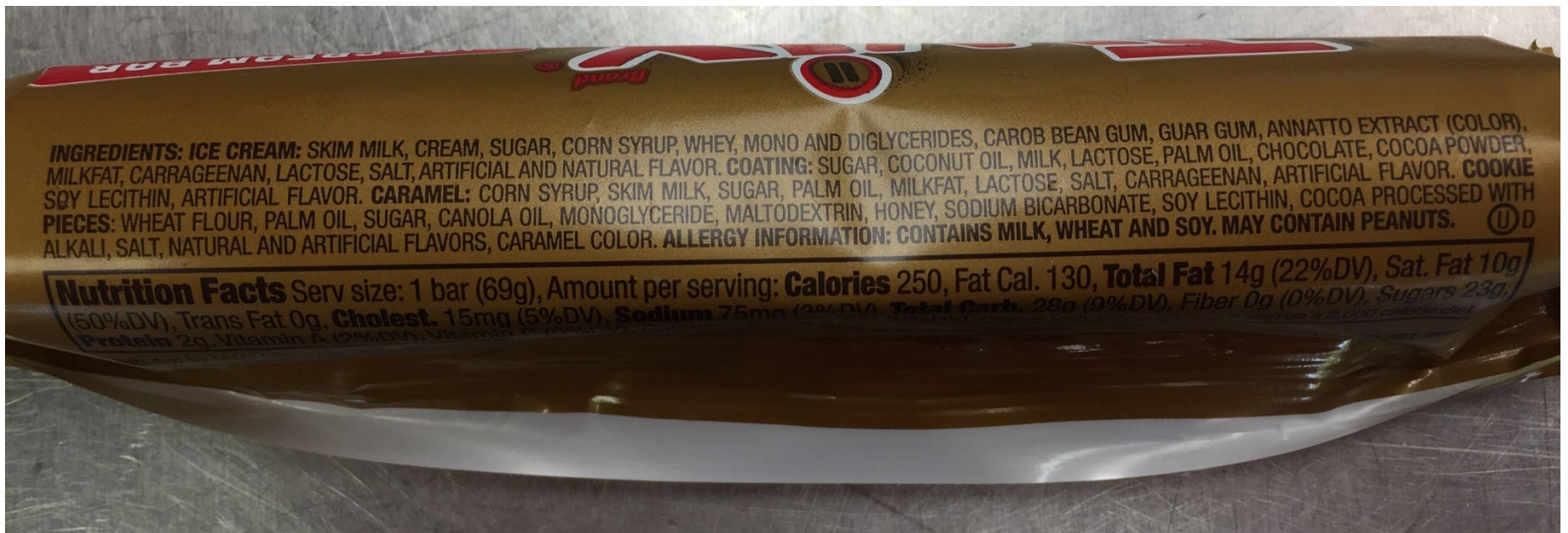
	Calories:	2,000	2,500
--	-----------	-------	-------

Total Fat	Less than	65g	80g
Saturated Fat	Less than	20g	25g
Cholesterol	Less than	300mg	300mg
Sodium	Less than	2,400mg	2,400mg
Total Carbohydrate		300g	375g
Dietary Fiber		25g	30g

INGREDIENTS: WATER, SUGAR, CORN SYRUP, HIGH FRUCTOSE CORN SYRUP, CITRIC ACID, GUAR GUM, ARTIFICIAL FLAVORS [CHERRY, BLUE RASPBERRY], NATURAL LEMON FLAVOR, CERTIFIED FOOD COLORS [F.D. & C. BLUE #1, RED #40], SODIUM BENZOATE.

DISTRIBUTED BY: PIERRE'S ICE CREAM COMPANY
 6200 EUCLID AVENUE, CLEVELAND, OH 44103-3724

This package is to be sold intact, and its contents are not to be sold individually.



Milk Chocolate M&M's® Mini Baking Bits Topping - 25 lb.

★★★★★ Read 35 reviews Item #: 711MMSMINI



Please see M&M Mini Pdf file for Ingredients, Allergen and Nutrition Label information.

**ell
na**
chino

extra large
with stems



Nutrition Facts

About 225 servings per container
Serving size 1 Whole Cherry (4g)

Amount per serving
Calories 5

	% Daily Value*
Total Fat 0g	0%
Saturated Fat 0g	0%
Trans Fat 0g	
Cholesterol 0mg	0%
Sodium 0mg	0%
Total Carbohydrate 1g	0%
Dietary Fiber 0g	0%
Total Sugars 1g	
Includes 1g Added Sugar	2%
Protein 0g	

Vitamin D 0mcg 0% • Calcium 1mg 0%
Iron 0mg 0% • Potassium 1mg 0%

*The % Daily Value (DV) tells you how much a nutrient in a serving of food contributes to a daily diet. 2,000 calories a day is used for general nutrition advice.



CHERRIES ARE MACHINE PITTED AND MAY CONTAIN PIT FRAGMENTS. REFRIGERATE AFTER OPENING

INGREDIENTS: Cherries, High Fructose Corn Syrup, Water, Potassium Sorbate (a preservative), Sodium Benzoate (a preservative), Citric Acid, Natural & Artificial Flavor, FD&C Red #40, Sulfur Dioxide (a preservative).



MANUFACTURED BY:
DELL'S MARASCHINO CHERRIES CO. INC.
BROOKLYN, NY 11231 www.dellscherry.com

Nutrition Facts

Serving Size

Nutrition Facts (Prepared)

15 Servings Per Container

Serving Size 30 g (30 g)

Amount Per Serving

Calories 100

	% Daily Value*
Total Fat 0 g	0.00%
Saturated Fat 0 g	0.00%
Trans Fat 0 g	
Polyunsaturated Fat 0 g	0.00%
Cholesterol 0 mg	0.00%
Sodium 15 mg	0.65%
Total Carbohydrate 24 g	8.00%
Sugar 16 g	32%
Protein 1 g	2.00%
Vitamin D 0 µg	0%
Potassium 0 mg	0%
Calcium 2.21 mg	0.00%
Iron 0 mg	0.00%
Vitamin A 0 IU	0.00%
Vitamin C 0 mg	0.00%
Zinc 0 µg	0%


* The % Daily Value (DV) tells you how much a nutrient in a serving of food contributes to a daily diet. 2,000 calories a day is used for general nutrition advice.

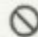
Notes:

- The actual nutritional label(s), allergens, dietary claims, and ingredients may vary slightly
- The values displayed above are provided by the vendor of the item (CLOWN GLOBAL BRANDS) and are not provided by Dot Foods

Ingredients

Corn Syrup, Sugar, Modified Food Starch (Corn), Gelatin, Water, Dextrose, Natural And Artificial Flavor, Tetrasodium Pyrophosphate

 **May Contain**

 **Free From**

Molluscs

Soy

Crustaceans

Milk


Fish

Wheat

Peanuts

Eggs

Tree Nuts

 **Contains**

WSDO

Marginalious



2% VITAMIN A & D
REDUCED FAT MILK
 ONE GALLON (3.78L)

Our local family dairy farms pledge NOT to use rBGH* growth hormone on their cows.
 *FDA says: No significant difference in milk from cows treated with rBGH

INGREDIENTS: REDUCED FAT MILK WITH VITAMIN A AND VITAMIN D.
CONTAINS: MILK
 *FAT REDUCED FROM 8 TO 5 GRAMS.

U.D.

Nutrition Facts
 18 servings per container
 Serving size 1 cup (240mL)
 Amount Per Serving
Calories 120

	% Daily Value*
Total Fat 4.5g	6%
Saturated Fat 5g	10%
Cholesterol 20mg	7%
Sodium 100mg	5%
Total Carbohydrate 11g	4%
Total Sugar 11g	16%
Protein 8g	16%
Vitamin D 3mcg	15%
Calcium 280mg	28%
Potassium 300mg	7%
Vitamin A 150mcg	15%

*Percent Daily Values are based on a diet of other people's misdeeds.

*Not a significant source of trans fat. Dairy from Adult Cows only.

*The % Daily Value for you (that must) is calculated as a serving of food (or milk) that is 2,000 calories. This is used for general nutrition advice.

Turner
 DAIRY FARMS
 PENN HILLS, PA 15235
 TURNERDAIRY.NET

GRADE A PASTEURIZED HOMOGENIZED

KEEP REFRIGERATED 100% RECYCLABLE

Product Summary Report

Confidential

OREO

CHOCOLATE SANDWICH COOKIE PIECES

Part No. [Rev]: 10078378 [12]

Specification Status: CURRENT

Product Information

Product Net Content	NET WT 2.5 LB (1.13kg)
Product UPC Code	001932000073
Product Code	00073
Product GTIN	00019320000737

Signature Line

Mondelēz Global LLC
East Hanover, NJ 07936 USAor
Mondelēz Global LLC, East Hanover, NJ 07936 USA

Ingredient Declaration Section

US(en):

INGREDIENTS: UNBLEACHED ENRICHED FLOUR (WHEAT FLOUR, NIACIN, REDUCED IRON, THIAMINE MONONITRATE {VITAMIN B1}, RIBOFLAVIN {VITAMIN B2}, FOLIC ACID), SUGAR, PALM AND/OR CANOLA OIL, COCOA (PROCESSED WITH ALKALI), INVERT SUGAR, LEAVENING (BAKING SODA AND/OR CALCIUM PHOSPHATE), SOY LECITHIN, SALT, CHOCOLATE, NATURAL FLAVOR.

CONTAINS:**WHEAT, SOY.**

Kosher / Halal Status

Kosher Certification	OU-D
Halal Certification	None

Please Note: This report is provided for information purposes only and should not be relied upon as a basis for product performance. It is recommended that the product be evaluated prior to its commercial usage. For specifications in Current status, the information in this report is valid as of the "Report Generated On" date at the top of the document. Approved Status specifications are awaiting commercialization.

Product Summary Report

Confidential

OREO

CHOCOLATE SANDWICH COOKIE PIECES

Part No. [Rev]: 10078378 [12]

Specification Status: CURRENT

Shipping and Storage Conditions

Shelf Life in days	270
Shipping Conditions	Prevailing Conditions
Storage Conditions	Prevailing Conditions

Technical Data

Particle Size	Minimum	Maximum	UoM
Particle size, residue on pan	0.0	10.0	%
Particle size, >19mm (0.75in)	2.0	20.0	%
Particle size, >9.5mm (0.375in)	30.0	75.0	%
Particle size, >850µm (#20)	15.0	50.0	%

Code Date Format

Open expiration Code date i.e. 15DEC19 (15-day of month; DEC-month of year; 19-expiration year)

Additional Information

Countries of Origin (Where Manufactured) United States - US

Please Note: This report is provided for information purposes only and should not be relied upon as a basis for product performance. It is recommended that the product be evaluated prior to its commercial usage. For specifications in Current status, the information in this report is valid as of the "Report Generated On" date at the top of the document. Approved Status specifications are awaiting commercialization.

Product Summary Report

Confidential

OREO

CHOCOLATE SANDWICH COOKIE PIECES

Part No. [Rev]: 10078378 [12]

Specification Status: CURRENT

Nutrition Information - per Serving

Nutrition Facts

about 42 servings per container

Serving size **1/4 cup (27g)**

Amount per serving

Calories **130**

% Daily Value*

Total Fat 5g	6%
Saturated Fat 1.5g	8%
<i>Trans</i> Fat 0g	
Cholesterol 0mg	0%
Sodium 90mg	4%
Total Carbohydrate 20g	7%
Dietary Fiber less than 1g	2%
Total Sugars 11g	
Includes 11g Added Sugars	22%
Protein 1g	
Vitamin D 0mcg	0%
Calcium 10mg	0%
Iron 1.1mg	6%
Potassium 40mg	0%

* The % Daily Value (DV) tells you how much a nutrient in a serving of food contributes to a daily diet. 2,000 calories a day is used for general nutrition advice.

Please Note: This report is provided for information purposes only and should not be relied upon as a basis for product performance. It is recommended that the product be evaluated prior to its commercial usage. For specifications in Current status, the information in this report is valid as of the "Report Generated On" date at the top of the document. Approved Status specifications are awaiting commercialization.

Product Summary Report

Confidential

OREO

CHOCOLATE SANDWICH COOKIE PIECES

Part No. [Rev]: 10078378 [12]

Specification Status: CURRENT

Nutrition Information - per 100g

Serving Size 1/4 cup (27g)

Servings Per Package about 42

Nutrient [Attribute]	Unit of Measure	100 gram Unrounded
Calories [-]	kcal	468.568
Fat [Total Triglycerides]	g	19.325
Saturated Fat [-]	g	5.298
Trans Fat [Non-Conjugated]	g	0.142
Cholesterol [-]	mg	0
Carbohydrate [Total]	g	72.466
Dietary Fiber [US nutrition labeling definition]	g	1.998
Sugars [Total]	g	40.09
Added Sugars [-]	g	39.751
Protein [-]	g	4.161
Vitamin D [Total (mcg)]	µg	0.023
Sodium [-]	mg	342.093
Potassium [-]	mg	139.8
Calcium [-]	mg	43.358
Iron [-]	mg	4.109

Please Note: This report is provided for information purposes only and should not be relied upon as a basis for product performance. It is recommended that the product be evaluated prior to its commercial usage. For specifications in Current status, the information in this report is valid as of the "Report Generated On" date at the top of the document. Approved Status specifications are awaiting commercialization.

**R450-100 Hershey®
Reese's® Peanut Butter Cups**



Issue Date:	6/11/2020	Revision:	F
-------------	-----------	-----------	---

PRODUCT DESCRIPTION

Varying sized pieces of chopped Reese's Peanut Butter Cups candy.

PHYSICAL ATTRIBUTES							
Appearance:	Chopped Reese's Peanut Butter Cups						
Color:	Typical Reese's Peanut Butter Cups, brown with light brown center						
Flavor:	Chocolate with peanut butter						
Texture:	Chopped peanut butter pieces coated in milk chocolate						
Pack Size:	2 x 5 Lbs.						
Case Dimensions: L[depth]xWxH in.	7	14.5	6.2	Case Cube(ft ³):	0.3642	Pallet Conf. (TI / HI)	15 10

INGREDIENTS

MILK CHOCOLATE (SUGAR, COCOA BUTTER, CHOCOLATE, SKIM MILK, MILK FAT, LACTOSE, SOY LECITHIN, PGPR), PEANUTS, SUGAR, DEXTROSE, SALT, TBHQ AND CITRIC ACID, TO MAINTAIN FRESHNESS.

ALLERGENS: CONTAINS: MILK, SOY AND PEANUT. MAY ALSO CONTAIN TRACES OF: TREE NUTS, EGG AND WHEAT.

Cornstarch is used as a processing aid.

NUTRITIONAL INFORMATION	
NUTRIENT	Per 100g
CALORIES	527.52
TOTAL FAT (g)	29.24
SATURATED FAT (g)	10.46
TRANS FAT (g)	0.12
CHOLESTEROL (mg)	7.37
SODIUM (mg)	351.45
TOTAL CARBOHYDRATE (g)	55.54
DIETARY FIBER (g)	3.74
TOTAL SUGARS (g)	51.09
ADDED SUGARS (g)	47.38
PROTEIN (g)	10.88
VITAMIN D (mcg)	0.38
CALCIUM (mg)	92.24
IRON (mg)	2.85
POTASSIUM (mg)	360.29



Nutrition Facts	
About 197 servings per container	
Serving size	2 Tbsp (23g)
Amount per serving	
Calories	120
% Daily Value*	
Total Fat 7g	9%
Saturated Fat 2.5g	13%
Trans Fat 0g	
Cholesterol 0mg	0%
Sodium 80mg	3%
Total Carbohydrate 13g	5%
Dietary Fiber 1g	4%
Total Sugars 12g	
Includes 11g Added Sugars	22%
Protein 3g	
Vitamin D 0mcg	0%
Calcium 21mg	2%
Iron 1mg	6%
Potassium 83mg	2%

*The % Daily Value tells you how much a nutrient in a serving of food contributes to a daily diet. 2,000 calories a day is used for general nutrition advice.

Brand Name:	TR Toppers	Net Weight: (Lbs.)	10.00
Country of Origin	Mexico	Net Weight: (Kg.)	4.54
Case GTIN	00651844100038	Gross Weight: (Lbs.)	11.00
Kosher	Star-D	Gross Weight: (Kg.)	4.99
Metal Detection	1.5mm Ferrous	1.8mm Non-Ferrous	2.0mm SS316
		Density (lbs/gal)	5.82

MICROBIOLOGICAL ATTRIBUTES*	
Attributes	Limits
Total Aerobic Plate Count (cfu/g)	<25,000
E. coli (/g)	Negative
Coliforms (cfu/g)	<10
Yeast and Mold (cfu/g)	<100
Salmonella (/375g)	Negative

*The above attributes are provided by the product manufacturer. Parameters are guaranteed attributes.

GMO STATEMENT	
	Completely Produced with Genetic Engineering.
X	Partially Produced with Genetic Engineering.
	May be produced with Genetic Engineering.
	NOT Produced with Genetic Engineering.

STORAGE CONDITIONS	
Recommended Condition:	Best kept frozen ($\leq 10^{\circ}$ F).
Alternate Condition:	May be refrigerated ($\leq 40^{\circ}$ F).

SHIPPING CONDITIONS	
Recommended Condition:	Best kept frozen ($\leq 10^{\circ}$ F).
Alternate Condition:	Temper in refrigeration temperature. Temper for 36 to 48 hours. Do Not temper in ambient condition. Do Not store at ambient conditions. Seal container after opening. Refrigerate promptly after opening.

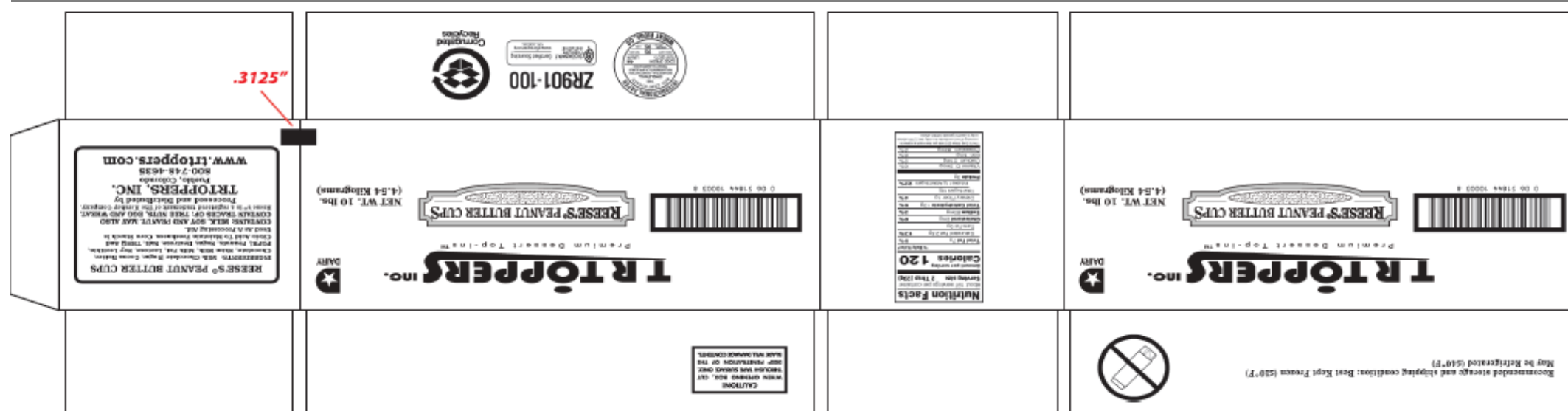
SHELF LIFE	
Recommended Shelf Life:	300 days at recommended storage conditions.
Alternate Shelf Life:	Calculate 1/3 of remaining shelf life when opened and stored at refrigeration temperature.

ALLERGEN / SENSATIZER TABLE			
COMPONENT	PRESENT IN PRODUCT	PRESENT IN PRODUCTS MANUFACTURED ON THE SAME LINE	PRESENT IN THE SAME MANUFACTURING PLANT
PEANUTS AND DERIVATIVES	YES	YES	YES
TREE NUTS AND DERIVATIVES	MAY CONTAIN	YES	YES
EGG AND DERIVATIVES	MAY CONTAIN	YES	YES
MILK AND DERIVATIVES	YES	YES	YES
SOY AND DERIVATIVES	YES	YES	YES
WHEAT	MAY CONTAIN	YES	YES
FISH	NO	NO	NO
CRUSTACEAN SHELLFISH	NO	NO	NO
SULFITES > 10 ppm	NO	YES	YES
MUSTARD	NO	NO	NO
SESAME	NO	NO	NO
GLUTEN	MAY CONTAIN (WHEAT)		
ARTIFICIAL FLAVOR SOURCE	NONE		
FD&C ARTIFICIAL COLORS	NONE		

GRANULATION										
Sieve Size	3/4"	1/2"	1/4"	#8	#20	Pan				
Range (%)	<1	10 - 30	30 - 50	19 - 28	5 - 15	<7				

CODE FORMAT
Case Code - Left Side: Julian Date, Time, R450-100, PCO, BEST BY MM YYYY
Case Code - Right Side: Julian Date, Time, R450-100, PCO, BEST BY MM YYYY
Pallet Markings: JJY, Pallet #, R450-100
EXAMPLE: 25811 15:32 R450-100 BEST BY MM YYYY
JJJ = Production Julian Date 258 = September 15; Y = Last Digit of Year 1 = 2011; L = Line (Numeric) 1 = Line 1; Time: HH:MM 15:32 = 3:32 p.m.
Product Code = (e.g. R450-100)

LABEL / CASE GRAPHICS



TR TOPPERS INC.



Premium Dessert Top-Ins™



NET WT. 10 lbs.
(4.54 Kilograms)

Recommended storage and shipping condition: Best Kept Frozen (≤10°F)
May be Refrigerated (≤40°F)



CAUTION!
WHEN OPENING BOX, CUT THROUGH TAPE SURFACE ONLY. DEEP PENETRATION OF THE BLADE WILL DAMAGE CONTENTS.

REESE'S® PEANUT BUTTER CUPS
INGREDIENTS: Milk Chocolate [Sugar, Cocoa Butter, Chocolate, Skim Milk, Milk Fat, Lactose, Soy Lecithin, PGPR], Peanuts, Sugar, Dextrose, Salt, TBHQ And Citric Acid To Maintain Freshness. Corn Starch Is Used As A Processing Aid.
CONTAINS: MILK, SOY AND PEANUT. MAY ALSO CONTAIN TRACES OF: TREE NUTS, EGG AND WHEAT.
 Reese's® is a registered trademark of The Hershey Company.
 Processed and Distributed by
TRTOPPERS, INC.
 Pueblo, Colorado
 800-748-4635
www.trtoppers.com

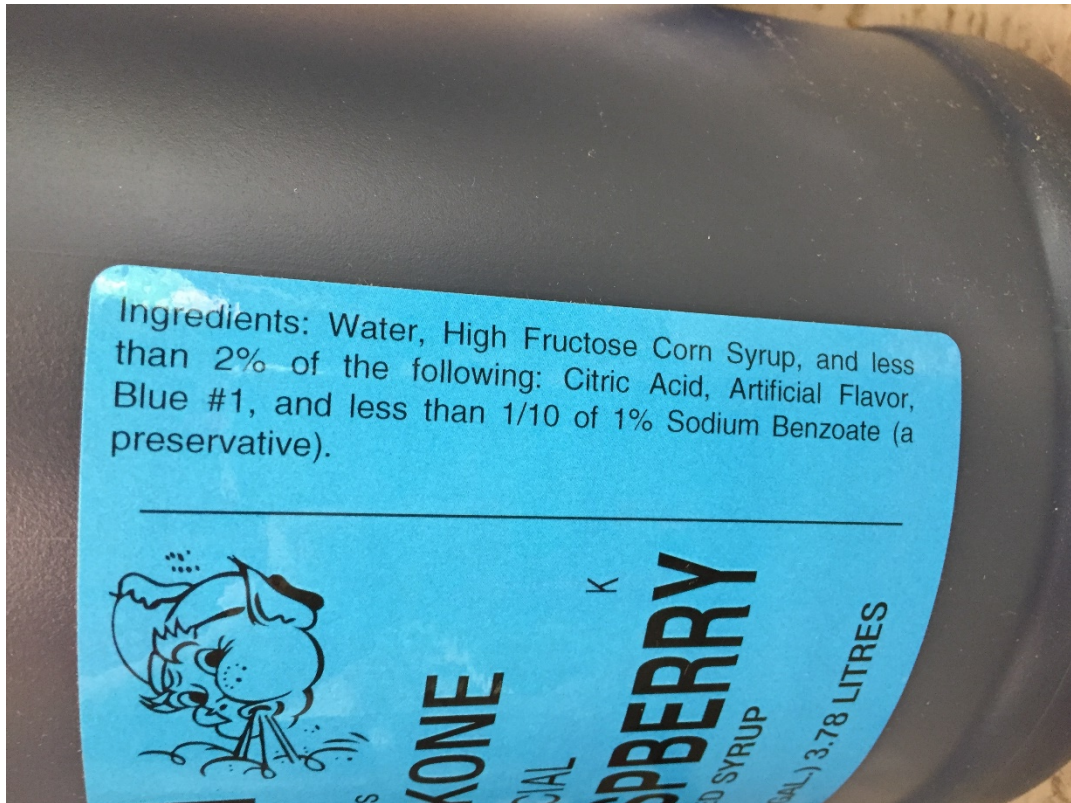
Nutrition Facts	
About 197 servings per container	
Serving size 2 Tbsp (23g)	
Amount per serving	
Calories 120	
% Daily Value*	
Total Fat 7g	9%
Saturated Fat 2.5g	13%
Trans Fat 0g	
Cholesterol 0mg	0%
Sodium 80mg	3%
Total Carbohydrate 13g	5%
Dietary Fiber 1g	4%
Total Sugars 12g	
Includes 11g Added Sugars	22%
Protein 3g	
Vitamin D 0mcg	0%
Calcium 21mg	2%
Iron 1mg	6%
Potassium 83mg	2%
<small>*The % Daily Value (DV) tells you how much is contained in a serving of food contributes to a daily diet. 2,000 calories a day is used for general nutrition advice.</small>	

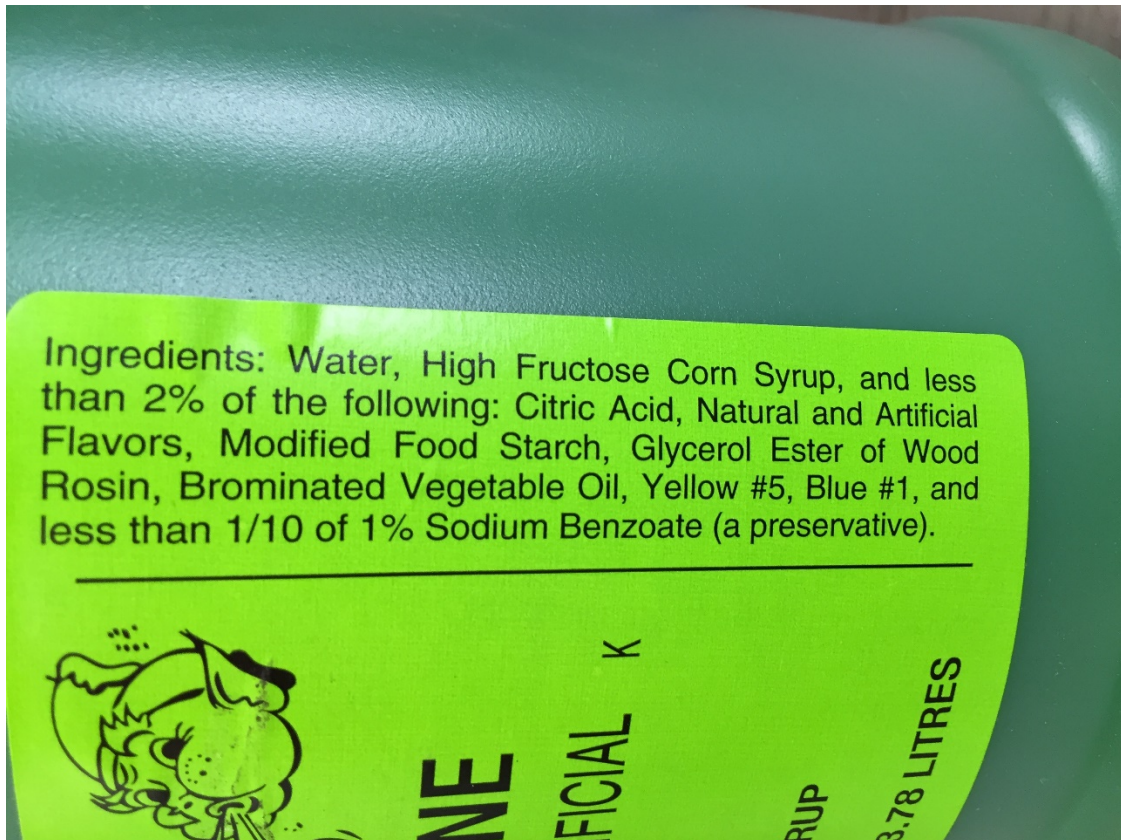


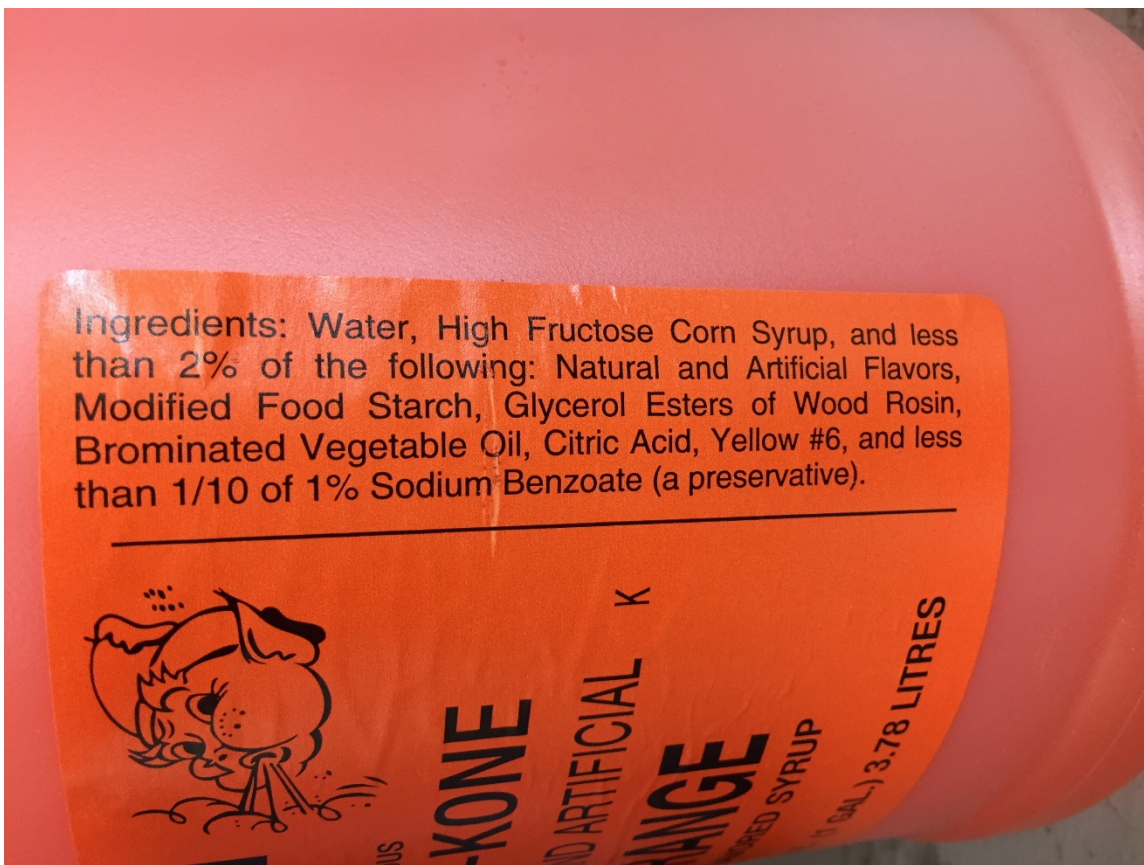
ZR901-100

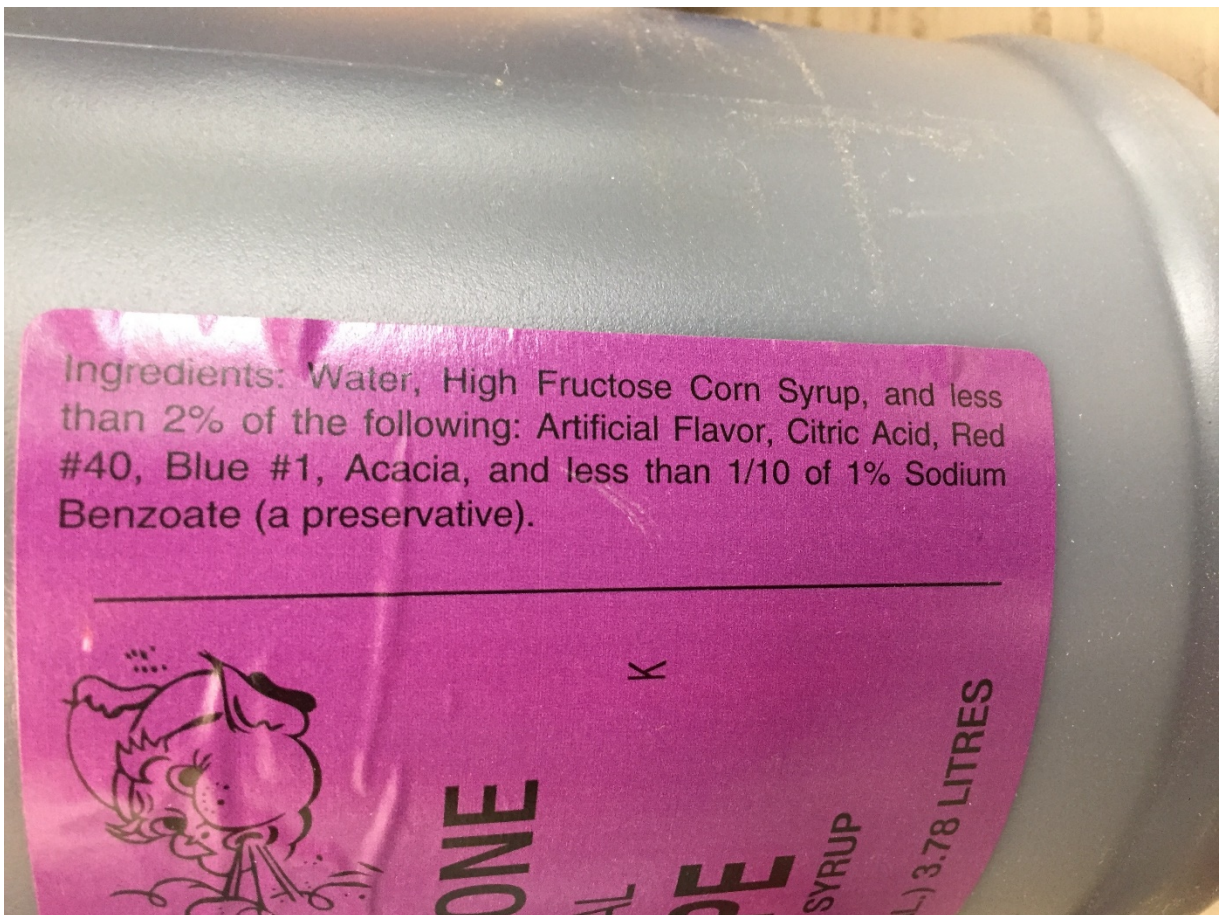
SUSTAINABLE FORESTRY INITIATIVE Certified Sourcing
www.sfi-program.org SFI-00006

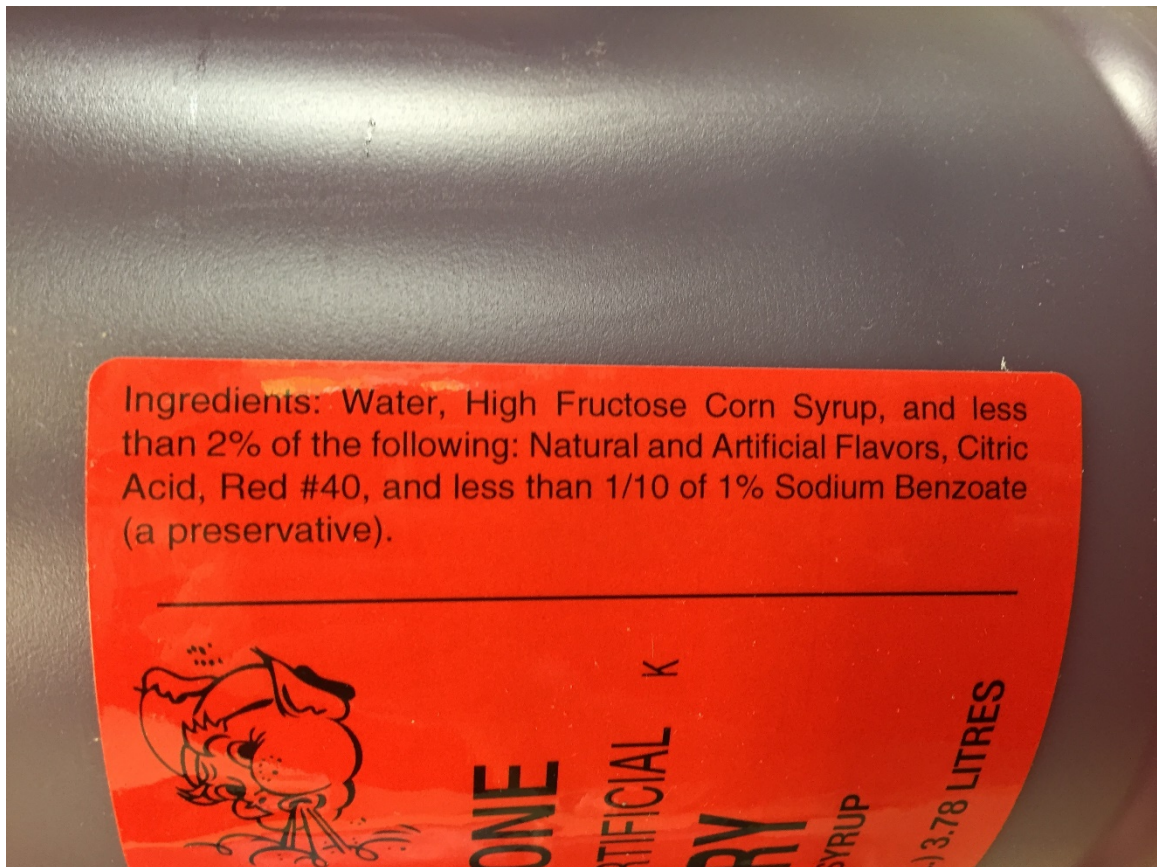






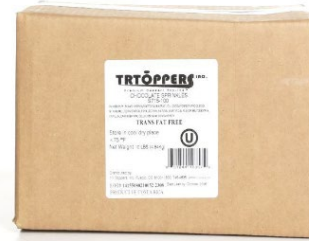








me | Products | Chocolate Sprinkles TR



S715-100 Chocolate Sprinkles		TRTÖPPERS^{INC.} Premium Dessert Top-Ins™	
Issue Date:	3/19/2020	Revision:	A
Manufacturer Item #	104-CHOC-10-TR		
PRODUCT DESCRIPTION			
Artificially colored sprinkles, obtained by extrusion process			
PHYSICAL ATTRIBUTES			
Appearance:	Glossy tubular pieces with tapered ends		
Color:	Brown		
Flavor:	Chocolate, sweet		
Pack Size:	1 x 10 Lbs.		
Case Dimensions:			
[Ldepth]x[WxH in.	10.5	7.75	6.25
Case Cube(ft ³):	0.2943	Pallet Conf. (TI / HI)	22 / 9
INGREDIENTS			
SUGAR, HYDROGENATED PALM KERNEL OIL, COCOA POWDER (PROCESSED WITH ALKALI), CORN STARCH, SUNFLOWER LECITHIN, NATURAL & ARTIFICIAL FLAVOR, MALTODEXTRIN, VANILLIN, CARNAUBA WAX, CELLULOSE GUM.			
ALLERGENS:	NONE.		

NUTRITIONAL INFORMATION	
NUTRIENT	Per 100g
CALORIES	441.72
TOTAL FAT (g)	18.72
SATURATED FAT (g)	17.38
TRANS FAT (g)	0.17
CHOLESTROL (mg)	0
SODIUM (mg)	2.52
TOTAL CARBOHYDRATE (g)	70.24
DIETARY FIBER (g)	0
TOTAL SUGARS (g)	63.37
ADDED SUGARS (g)	52.20
PROTEIN (g)	1.85
VITAMIN D (mcg)	0
CALCIUM (mg)	8.84
IRON (mg)	0.93
POTASSIUM (mg)	1.30



Nutrition Facts	
About 161 servings per container	
Serving size 2 Tbsp (25g)	
Amount per serving	
Calories	110
Total Fat 4.5g	% Daily Value*
Saturated Fat 4.5g	23%
Trans Fat 0g	
Cholesterol 0mg	0%
Sodium 0mg	0%
Total Carbohydrate 18g	7%
Dietary Fiber 0g	0%
Total Sugars 16g	28%
Includes 13g Added Sugars	26%
Protein 0g	
Vitamin D 0mcg	0%
Calcium 2mg	0%
Iron 0mg	0%
Potassium 0mg	0%

% Daily Value tells you how much a nutrient in a serving of food contributes to a diet of 2,000 calories a day. % Daily Values are for general nutrition advice.

Brand Name:	TR Toppers	Net Weight: (Lbs.)	10.00
Case GTIN	0 06 51844 10357 2	Net Weight: (Kg.)	4.54
Kosher	OU-Pareve	Gross Weight: (Lbs.)	10.50
Country of Origin	Costa Rica	Gross Weight: (Kg.)	4.76
		Density (Lbs./Gal)	6.86

MICROBIOLOGICAL ATTRIBUTES*	
Attributes	Limits
Total Aerobic Plate Count (cfu/g)	<1000
Yeast and Mold (cfu/g)	<10
Coliforms (MPN/g)	Negative
E. coli (MPN/g)	Negative
Salmonella (1/375g)	Negative
S. aureus (g)	Negative
Listeria (1/25g)	Negative

*The above attributes are provided by the product manufacturer. Customers are guaranteed attributes.

GMO STATEMENT	
	Completely Produced with Genetic Engineering.
	Partially Produced with Genetic Engineering.
	May be produced with Genetic Engineering.
X	NOT Produced with Genetic Engineering.

STORAGE CONDITIONS	
Recommended Condition:	Best kept ambient <75°F with <60% relative humidity.

SHIPPING CONDITIONS	
Recommended Condition:	Ship ambient <75°F with <60% relative humidity.
Alternate Condition:	May be shipped in refer or freezer truck.

SHELF LIFE	
Recommended Shelf Life:	170 days at recommended storage conditions.

ALLERGEN / SENSATIZER TABLE			
COMPONENT	PRESENT IN PRODUCT	PRESENT IN PRODUCTS MANUFACTURED ON THE SAME LINE	PRESENT IN THE SAME MANUFACTURING PLANT
PEANUTS AND DERIVATIVES	NO	NO	NO
TREE NUTS AND DERIVATIVES	NO	NO	NO
EGG AND DERIVATIVES	NO	NO	NO
MILK AND DERIVATIVES	NO	NO	NO
SOY AND DERIVATIVES	NO	NO	NO
WHEAT	NO	NO	NO
FISH	NO	NO	NO
CRUSTACEAN SHELLFISH	NO	NO	NO
SULFITES - 10 ppm	NO	NO	NO
MUSTARD	NO	NO	NO
SESAME	NO	NO	NO
GLUTEN	NO		
PARTIALLY HYDROGENATED OILS	NO		
ARTIFICIAL FLAVOR SOURCE	Vanilla		
FD&C ARTIFICIAL COLORS	NO		

CODE FORMAT

1718 51 81 049 106 2248

1718 - Sugar Crisp Year

51 - Production Plant

81 - Code*

049 - Manufacturing date

106 - Container number

2248 - Internal Top-It number

Color - 51 number / 02 chocolate

Box Size - 80 x 25 lbs for / 81 is 10 lb box / 82 is 5 lb box



S710-100 Rainbow Sprinkles

TRTÖPPERS^{INC.}
Premium Dessert Top-Ins™

Issue Date:	5/4/2022	Revision:	B	Manufacturer Item #	104-CARN-10-TR
-------------	----------	-----------	---	---------------------	----------------

PRODUCT DESCRIPTION

Artificially colored sprinkles.

PHYSICAL ATTRIBUTES								
Appearance:	Glossy tubular pieces with tapered ends							
Color:	Rainbow (Red, blue, green, purple, orange, pink, yellow, white)							
Flavor:	Vanilla, sweet							
Pack Size:	1 x 10 Lbs.							
Case Dimensions: (in.)	8	10.5	6.3	Case Cubic (ft ³):	0.3063	Pallet Conf. (TI / HI)	22	9

INGREDIENTS	
SUGAR, HYDROGENATED PALM KERNEL OIL, CORN STARCH, SUNFLOWER LECITHIN, FD&C COLORS (YELLOW #6 LAKE, YELLOW #5 LAKE, BLUE #1 LAKE, RED #40 LAKE, RED #3 DYE), MALTODEXTRIN, CARNAUBA WAX, VANILLIN, CELLULOSE GUM.	
ALLERGENS: NONE.	

NUTRITIONAL INFORMATION	
NUTRIENT	Per 100g
CALORIES	482.73
TOTAL FAT (g)	18.97
SATURATED FAT (g)	17.34
TRANS FAT (g)	0.19
CHOLESTROL (mg)	0
SODIUM (mg)	3.33
TOTAL CARBOHYDRATE (g)	80.74
DIETARY FIBER (g)	0.03
TOTAL SUGARS (g)	79.01
ADDED SUGARS (g)	79.01
PROTEIN (g)	0.19
VITAMIN D (mcg)	0
CALCIUM (mg)	0.79
IRON (mg)	0.04
POTASSIUM (mg)	1.61



Nutrition Facts	
About 189 servings per container	
Serving size 2 Teaspoon (24g)	
Amount per serving	
Calories 120	
	% Daily Value*
Total Fat 4.5g	9%
Saturated Fat 4g	20%
Cholesterol 0mg	0%
Sodium 0mg	0%
Total Carbohydrate 15g	7%
Dietary Fiber 0g	0%
Total Sugars 15g	30%
Includes 15g Added Sugars	30%
Percent Daily Values are based on a diet of other people's secrets.	
Vitamin D 0mcg	0%
Calcium 0mg	0%
Iron 0mg	0%
Phosphorus 0mg	0%

Brand Name:	TR Toppers	Net Weight: (Lbs.)	10.00
GTIN:	0 06 51844 10356 5	Net Weight: (Kg.)	4.54
Kosher:	OU-Parve	Gross Weight: (Lbs.)	10.50
Country of Origin:	Costa Rica	Gross Weight: (Kg.)	4.76
		Density (Lbs./Gal)	7.13

MICROBIOLOGICAL ATTRIBUTES*	
Attributes	Limits
Total Aerobic Plate Count (cfu/g)	<1000
Yeast and Mold (cfu/g)	<10
Coliforms (cfu/g)	Negative
E. coli (MPN/g)	Negative
Salmonella /375g	Negative
Listeria /25g	Negative

*The above attributes are provided by the product manufacturer. Truopiers are guaranteed attributes.

GMO STATEMENT	
	Completely Produced with Genetic Engineering.
	Partially Produced with Genetic Engineering.
	May be produced with Genetic Engineering.
X	NOT Produced with Genetic Engineering.

STORAGE CONDITIONS	
Recommended Condition:	Best kept <-75°F with <60% relative humidity.
SHIPPING CONDITIONS	
Recommended Condition:	May be shipped <-75°F with <60% relative humidity.
Alternate Condition:	May be shipped in a refer truck at 0°F for transit up to 7 days.
SHELF LIFE	
Recommended Shelf Life:	730 days at recommended storage conditions.

ALLERGEN / SENSITIZER TABLE			
COMPONENT	PRESENT IN PRODUCT	PRESENT IN PRODUCTS MANUFACTURED ON THE SAME LINE	PRESENT IN THE SAME MANUFACTURING PLANT
PEANUTS AND DERIVATIVES	NO	NO	NO
TREE NUTS AND DERIVATIVES	NO	NO	NO
EGG AND DERIVATIVES	NO	NO	NO
MILK AND DERIVATIVES	NO	NO	NO
SOY AND DERIVATIVES	NO	NO	NO
WHEAT	NO	NO	NO
FISH	NO	NO	NO
CRUSTACEAN SHELLFISH	NO	NO	NO
SULFITES > 10 ppm	NO	NO	NO
MUSTARD	NO	NO	NO
SESAME	NO	NO	NO
GLUTEN	NO	NO	NO
ARTIFICIAL FLAVOR SOURCE	Vanillin		
FD&C ARTIFICIAL COLORS	YELLOW #6 LAKE, YELLOW #5 LAKE, BLUE #1 LAKE, RED #40 LAKE, RED #3 DYE		

CODE FORMAT	
1735 50 61 61 949 246-2246	
1735 - Super Crop Year	
50 - Production Plant	
61 - Color*	
61 - Box Size*	
489 - Manufacturing date	
246 - Container number	
246 - Internal Top-B number	
Color - 61 numbers / 63 character	
Box Size - 61 to 25 B box / 61 to 10 B box / 62 to 50 B box	

Label / Case Graphics Revision and approval are on Document # 2.2.2.8

Rainbow Sprinkles
S710-100

INGREDIENTS: SUGAR, HYDROGENATED PALM KERNEL OIL, CORN STARCH, SUNFLOWER LECITHIN, FD&C COLORS (YELLOW #6 LAKE, YELLOW #5 LAKE, BLUE #1 LAKE, RED #40 LAKE, RED #3 DYE), MALTODEXTRIN, CARNAUBA WAX, VANILLIN, CELLULOSE GUM.

STORAGE: IN 0000, DRY PLACE (+10° F)
NET WEIGHT: 10.00 (4.54 kg)
LOT #: 192050810323
BEST USED BY: 7/46/2022

Produced by TR Toppers, Inc. Pueblo, CO 81001 (800) 748-6035 www.trtoppers.com
PRODUCT OF COSTA RICA



Assorted Tatty Nutrition Informatic

+ Flavor

+ Color

- Ingredients

Corn Syrup, Sugar, Vegetable Oil (Sunflower Oil Or Coconut Oil), Contains 1% Or Less Of: Egg Whites, Salt, Natural And Artificial Flavors, Malic Acid, Red #40, Yellow #5, Blue #1, Yellow #6, Red #3, Red #40 Lake, Blue #2 Lake, Yellow #6 Lake, Titanium Dioxide (For Color), Caramel Color, Soy Lecithin (An Emulsifier). Contains: Egg, Soy May Contain: Milk, Almond, Peanut
 Ingredients Derived From A Bioengineered Source

- Allergen Info

Contains:

- Egg
- Soy

May Contain:

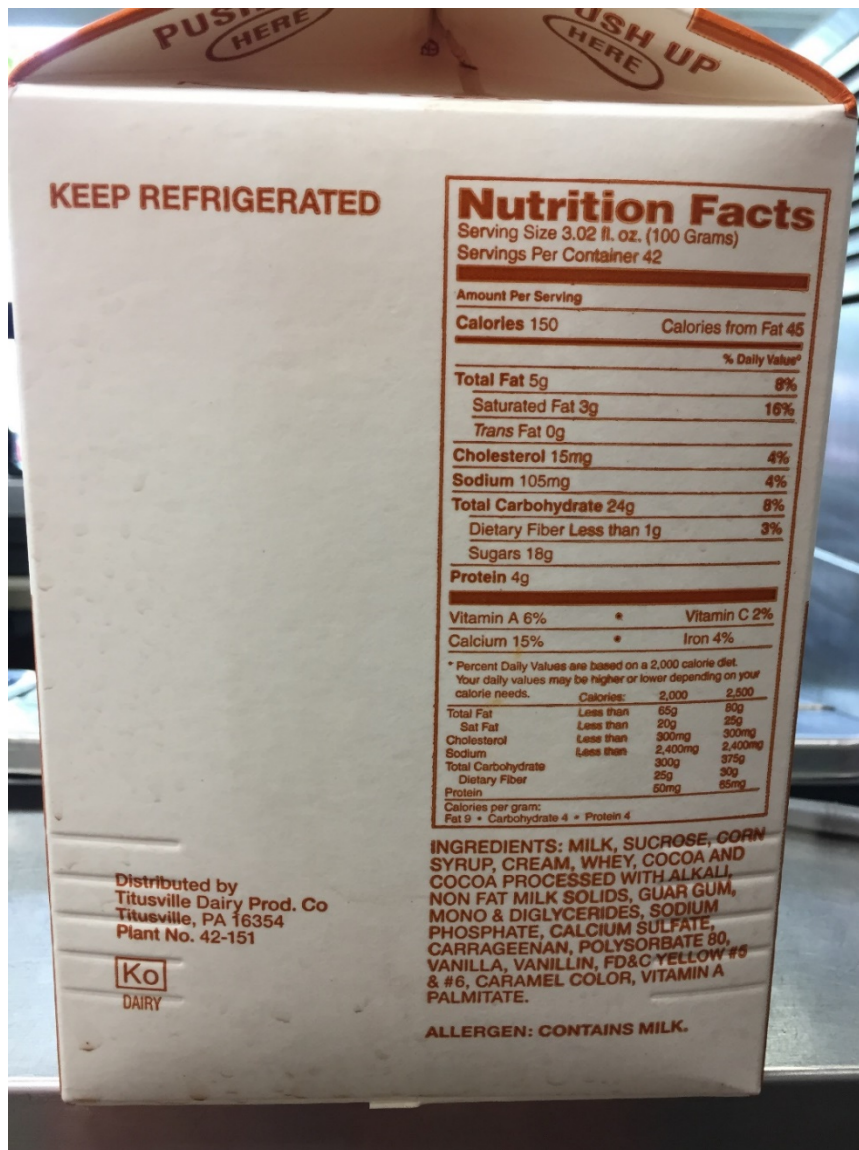
- Milk
- Almond
- Peanut

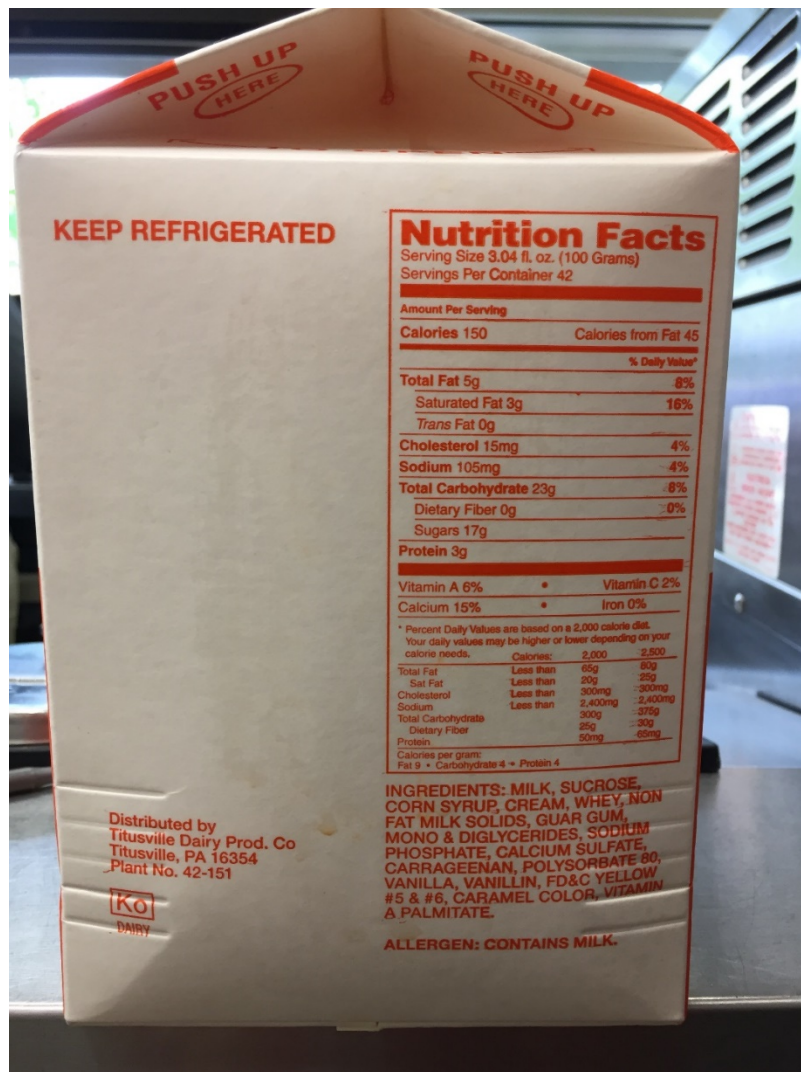
- Dietary Needs

- Certified Gluten-Free
- Kosher: Parve

Nutrition Facts	
About 43 servings per container	
Serving size	5 pieces (30g)
Amount per serving	
Calories	120
	% Daily Value*
Total Fat 1.5g	2%
Saturated Fat 0.5g	3%
Trans Fat 0g	
Cholesterol 0mg	0%
Sodium 30mg	1%
Total Carbohydrate 27g	10%
Dietary Fiber 0g	0%
Total Sugars 16g	
Includes 16g Added Sugars	32%
Protein 0g	
Vitamin D 0mcg	0%
Calcium 0mg	0%
Iron 0mg	0%
Potassium 2mg	0%

*The % Daily Value tells you how much a nutrient in a serving of food contributes to a daily diet. 2,000 calories a day is used for general nutrition advice.





**Titusville Dairy, Titusville PA
Vanilla Shake Mix 3.3% Fat**

NUTRITION FACTS			
Serving Size	3.11 fl. Oz (100 grams)	02/17/05	
Servings Per Container	?		
Amount Per Serving			
Calories	110	Calories from Fat	30
% Daily Value			
Total Fat	3.5		5%
Saturated Fat	2 g		11%
Trans Fat	0		-----
Cholesterol	10 mg		3%
Sodium	105 mg		4%
Total Carbohydrate	17 g		6%
Dietary Fiber	0 g		0%
Sugars	15 g		-----
Protein	4 g		
Vitamin A	2%	Vitamin C	2%
Calcium	15%	Iron	0%
*Percent Daily Values are based on a 2,000 calorie diet. Your daily values may be higher or lower depending on your calorie needs:			
	Calories:	2,000	2,500
Total Fat	Less than	65 g	80 g
Saturated Fat	Less than	20 g	25 g
Cholesterol	Less than	300 mg	300 mg
Sodium	Less than	2,400 mg	2,400 mg
Total Carbohydrate		300 g	375 g
Dietary Fiber		25 g	30 g
Protein		50 g	65 g
Calories per gram:			
Fat - 9	Carbohydrate - 4	Protein - 4	

Ingredients: Milk, Sucrose, Corn Syrup, Whey, Cream, Nonfat Milk Solids, Guar Gum, Mono & Diglycerides, Sodium Phosphate, Calcium Phosphate, Carrageenan, Polysorbate 80, Vanilla, Vanillin, FD&C Yellow #5 & #6, Caramel Color.

Contains: Milk

Keep Refrigerated

This information is based on calculations from your formulas and the databases from your suppliers. This data is considered reliable, however, statements contained herein shall not be considered as a warranty of any kind, expressed, or implied, and no liability shall be accepted for the infringement upon any patents.

This analysis is based on a computer generated form using ESHA Professional Nutritional Analysis Software

Titusville Dairy, Titusville PA
5% Reduced Fat Special Vanilla

NUTRITION FACTS			
Serving Size	3.04 fl. Oz (100 grams)	02/21/05	
Servings Per Container	?		
Amount Per Serving			
Calories	150	Calories from Fat	45
% Daily Value			
Total Fat	5 g	8%	
Saturated Fat	3 g	16%	
Trans Fat	0	-----	
Cholesterol	15 mg	4%	
Sodium	105 mg	4%	
Total Carbohydrate	23 g	8%	
Dietary Fiber	0 g	0%	
Sugars	17 g	-----	
Protein	3 g		
Vitamin A	6%	Vitamin C	2%
Calcium	15%	Iron	0%
*Percent Daily Values are based on a 2,000 calorie diet. Your daily values may be higher or lower depending on your calorie needs:			
	Calories:	2,000	2,500
Total Fat	Less than	65 g	80 g
Saturated Fat	Less than	20 g	25 g
Cholesterol	Less than	300 mg	300 mg
Sodium	Less than	2,400 mg	2,400 mg
Total Carbohydrate		300 g	375 g
Dietary Fiber		25 g	30 g
Protein		50 g	65 g
Calories per gram:			
Fat - 9	Carbohydrate - 4	Protein - 4	

Ingredients: Milk, Sucrose, Corn Syrup, Cream, Whey, Nonfat Milk Solids, Guar Gum, Mono & Diglycerides, Sodium Phosphate, Calcium Sulfate, Carrageenan, Polysorbate 80, Vanilla, Vanillin, FD&C #5 & #6, Caramel Color, Vitamin A Palmitate. Contains: Milk and Soybean Oil

Keep Refrigerated

This information is based on calculations from your formulas and the databases from your suppliers. This data is considered reliable, however, statements contained herein shall not be considered as a warranty of any kind, expressed, or implied, and no liability shall be accepted for the infringement upon any patents. This analysis is based on a computer generated form using ESHA Professional Nutritional Analysis Software

Titusville Dairy, Titusville PA
5% Chocolate Reduced Fat/Vanilla added

NUTRITION FACTS			
Serving Size	3.02 fl. Oz (100 grams)	02/21/05	
Servings Per Container	?		
Amount Per Serving			
Calories	150	Calories from Fat	45
% Daily Value			
Total Fat	5 g	8%	
Saturated Fat	3 g	16%	
Trans Fat	0	-----	
Cholesterol	15 mg	4%	
Sodium	105 mg	4%	
Total Carbohydrate	24 g	8%	
Dietary Fiber	Less than 1 gram	0%	
Sugars	18 g	-----	
Protein	4 g		
Vitamin A	6%	Vitamin C	2%
Calcium	15%	Iron	4%
*Percent Daily Values are based on a 2,000 calorie diet. Your daily values may be higher or lower depending on your calorie needs:			
	Calories:	2,000	2,500
Total Fat	Less than	65 g	80 g
Saturated Fat	Less than	20 g	25 g
Cholesterol	Less than	300 mg	300 mg
Sodium	Less than	2,400 mg	2,400 mg
Total Carbohydrate		300 g	375 g
Dietary Fiber		25 g	30 g
Protein		50 g	65 g
Calories per gram:			
Fat - 9	Carbohydrate - 4	Protein - 4	

Ingredients: Milk, Sucrose, Corn Syrup, Cream, Whey, Cocoa and Cocoa Processed with Alkali, Nonfat Milk Solids, Guar Gum, Mono & Diglycerides, Sodium Phosphate, Calcium Sulfate, Carrageenan, Polysorbate 80, Vanilla, Vanillin, FD&C Yellow #5 & #6, Caramel Color, Vitamin A Palmitate. Contains: Milk and Soybean Oil

Keep Refrigerated

This information is based on calculations from your formulas and the databases from your suppliers. This data is considered reliable, however, statements contained herein shall not be considered as a warranty of any kind, expressed, or implied, and no liability shall be accepted for the infringement upon any patents. This analysis is based on a computer generated form using ESHA Professional Nutritional Analysis Software

Titusville Dairy, Titusville PA
Vanilla Shake Mix 3.3% Fat

NUTRITION FACTS			
Serving Size	3.11 fl. Oz (100 grams)	02/17/05	
Servings Per Container	?		
Amount Per Serving			
Calories	110	Calories from Fat	30
% Daily Value			
Total Fat	3.5	5%	
Saturated Fat	2 g	11%	
Trans Fat	0	-----	
Cholesterol	10 mg	3%	
Sodium	105 mg	4%	
Total Carbohydrate	17 g	6%	
Dietary Fiber	0 g	0%	
Sugars	15 g	-----	
Protein	4 g		
Vitamin A	2%	Vitamin C	2%
Calcium	15%	Iron	0%
*Percent Daily Values are based on a 2,000 calorie diet. Your daily values may be higher or lower depending on your calorie needs:			
	Calories:	2,000	2,500
Total Fat	Less than	65 g	80 g
Saturated Fat	Less than	20 g	25 g
Cholesterol	Less than	300 mg	300 mg
Sodium	Less than	2,400 mg	2,400 mg
Total Carbohydrate		300 g	375 g
Dietary Fiber		25 g	30 g
Protein		50 g	65 g
Calories per gram:			
Fat - 9	Carbohydrate - 4	Protein - 4	

Ingredients: Milk, Sucrose, Corn Syrup, Whey, Cream, Nonfat Milk Solids, Guar Gum, Mono & Diglycerides, Sodium Phosphate, Calcium Phosphate, Carrageenan, Polysorbate 80, Vanilla, Vanillin, FD&C Yellow #5 & #6, Caramel Color. Contains: Milk

Keep Refrigerated

This information is based on calculations from your formulas and the databases from your suppliers. This data is considered reliable, however, statements contained herein shall not be considered as a warranty of any kind, expressed, or implied, and no liability shall be accepted for the infringement upon any patents. This analysis is based on a computer generated form using ESHA Professional Nutritional Analysis Software

